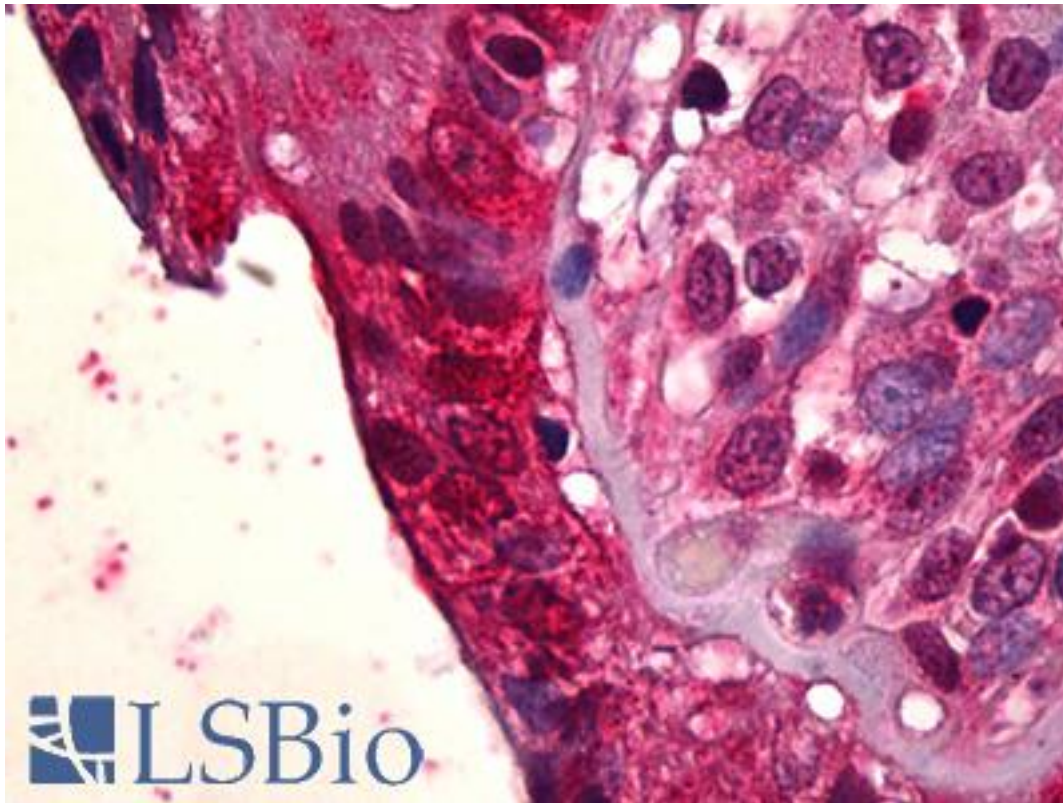


PLK1 / PLK-1 Rabbit anti-Human Polyclonal Antibody - LS-B6646 - LSBio

CatalogID:	LS-B6646
Validation:	This antibody replaces catalog number LS-C137268. It has been validated for use in the following assays: IHC-P.
Target:	polo-like kinase 1 (PLK1)
Synonyms:	PLK1 Antibody, Polo like kinase Antibody, Polo-like kinase (Drosophila) Antibody, Polo-like kinase 1 Antibody, STPK13 Antibody, Polo (Drosophia)-like kinase Antibody, PLK Antibody, PLK-1 Antibody
Family / Subfamily:	Protein Kinase / Polo
Host	PLK1 antibody was produced in Rabbit
Clonality:	Polyclonal
Isotype:	IgG
Immunogen Species:	PLK1 / PLK-1 antibody was raised against Human
Antigen Type:	Recombinant protein
Immunogen:	PLK1 / PLK-1 antibody was raised against recombinant protein
Reactivity:	Human
Purification:	Affinity purified
Presentation:	PBS, pH 7.4, 0.02% sodium azide
Recommended Storage:	Short term 4°C, long term aliquot and store at -20°C, avoid freeze thaw cycles.
Uses:	IHC - Paraffin (5 µg/ml), Western blot (Optimal dilution to be determined by the researcher)
Size:	50 µl
Concentration:	1 mg/ml

Immunohistochemistry Image:



Anti-PLK1 antibody IHC of human colon, epithelium. Immunohistochemistry of formalin-fixed, paraffin-embedded tissue after heat-induced antigen retrieval. Antibody LS-B6646 concentration 5 ug/ml.

Western Blot Image:

Hela A431



—95KD
—72KD
—55KD
—43KD

**Western Blot analysis of
Hela and A431 cell Lysate
with anti-PLK1 antibody**

WB 1:500

Requested From:

Japan

Laboratory Reagent For In Vitro Research Use Only

Not for resale without prior written consent from LifeSpan BioSciences, Inc.

Created on 9/24/2014

© 2014 LifeSpan BioSciences