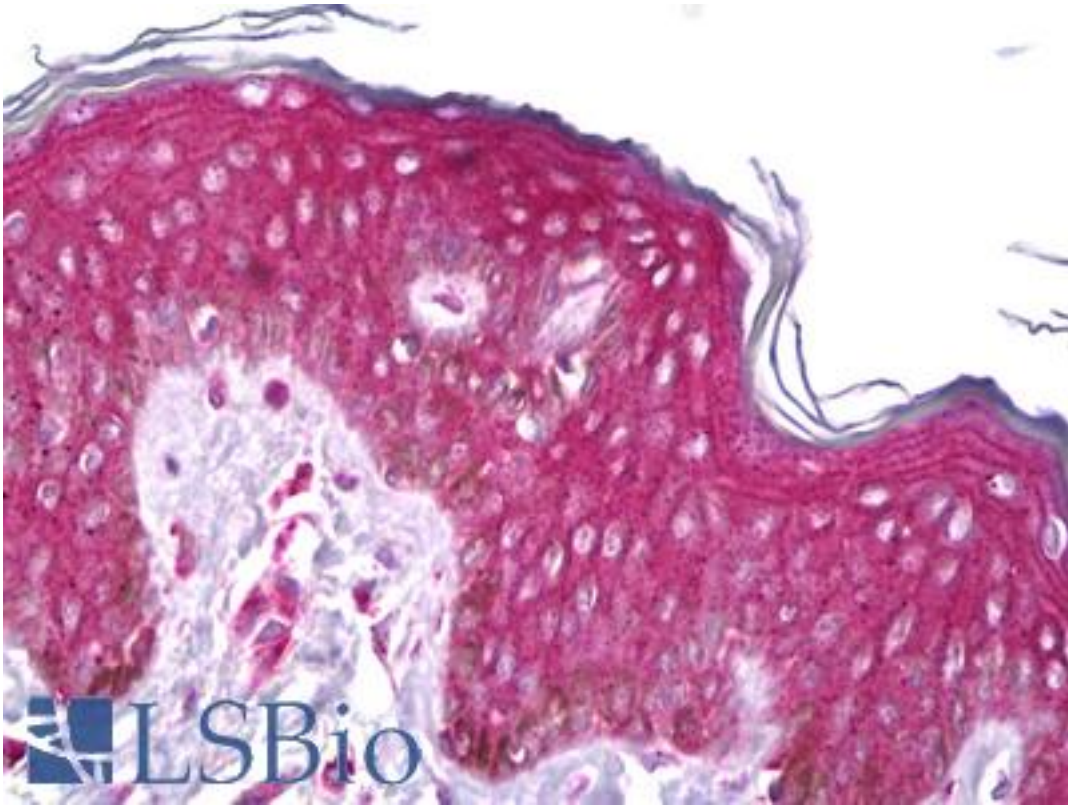


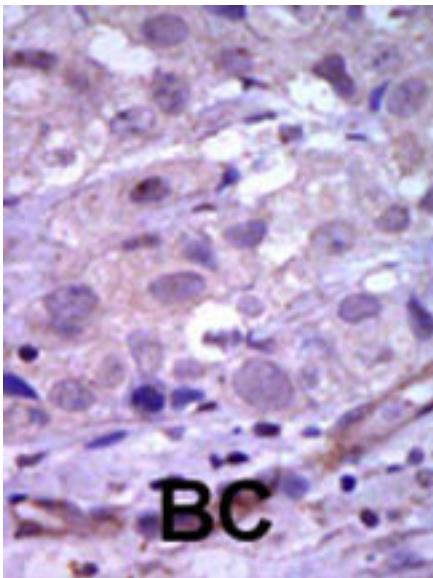
RET Rabbit anti-Human Polyclonal (N-Terminus) Antibody - LS-B6584 - LSBio	
CatalogID:	LS-B6584
Validation:	This antibody replaces catalog number LS-C99118. It has been validated for use in the following assays: IHC-P.
Target:	ret proto-oncogene
Synonyms:	RET Antibody, Cadherin family member 12 Antibody, CDHF12 Antibody, C-ret Antibody, Hirschsprung disease 1 Antibody, HSCR1 Antibody, Hydroxyaryl-protein kinase Antibody, Oncogene ret Antibody, Proto-oncogene c-Ret Antibody, RET-ELE1 Antibody, RET51 Antibody, Ret proto-oncogene Antibody, RET transforming sequence Antibody, RET43 Antibody, Men2-ret Antibody, MEN2B Antibody, MTC1 Antibody, Receptor tyrosine kinase Antibody, CDHR16 Antibody, MEN2A Antibody, PTC Antibody, RET9 Antibody
Family / Subfamily:	Protein Kinase / Cadherin
Host	RET antibody was produced in Rabbit
Clonality:	Polyclonal
Isotype:	IgG
Immunogen Species:	RET antibody was raised against Human
Antigen Type:	Synthetic peptide
Immunogen:	RET antibody was raised against kLH conjugated synthetic peptide selected from the N-terminal region of human RET.
Epitope:	N-Terminus
Reactivity:	Human
Purification:	Ammonium sulfate precipitation
Presentation:	PBS, 0.09% sodium azide
Recommended Storage:	Maintain refrigerated at 2-8°C for up to 6 months. For long term storage store at -20°C.
Uses:	IHC - Paraffin (5 µg/ml), Western blot (1:1000) (Optimal dilution to be determined by the researcher)
Size:	200 µl

Immunohistochemistry Image:



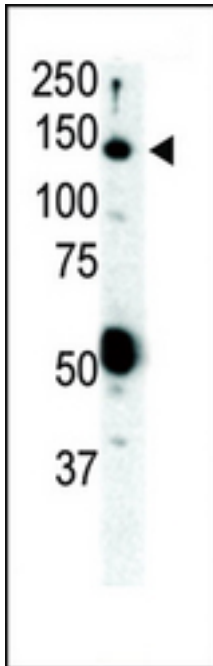
Anti-RET antibody IHC of human skin. Immunohistochemistry of formalin-fixed, paraffin-embedded tissue after heat-induced antigen retrieval. Antibody LS-B6584 concentration 5 ug/ml.

Immunohistochemistry Image:



Formalin-fixed and paraffin-embedded human cancer tissue reacted with the primary antibody, which was peroxidase-conjugated to the secondary antibody, followed by AEC staining. This data demonstrates the use of this antibody for immunohistochemistry; clinical relevance has not been evaluated. BC = breast carcinoma; HC = hepatocarcinoma.

Western Blot Image:



Western blot of anti-Ret Pab LS-B6584 in SKBR3 cell lysate. Ret (arrow) was detected using purified Pab. Secondary HRP-anti-rabbit was used for signal visualization with chemiluminescence.

Requested From:

Japan

Laboratory Reagent For In Vitro Research Use Only

Not for resale without prior written consent from LifeSpan BioSciences, Inc.

Created on 9/24/2014

© 2014 LifeSpan BioSciences