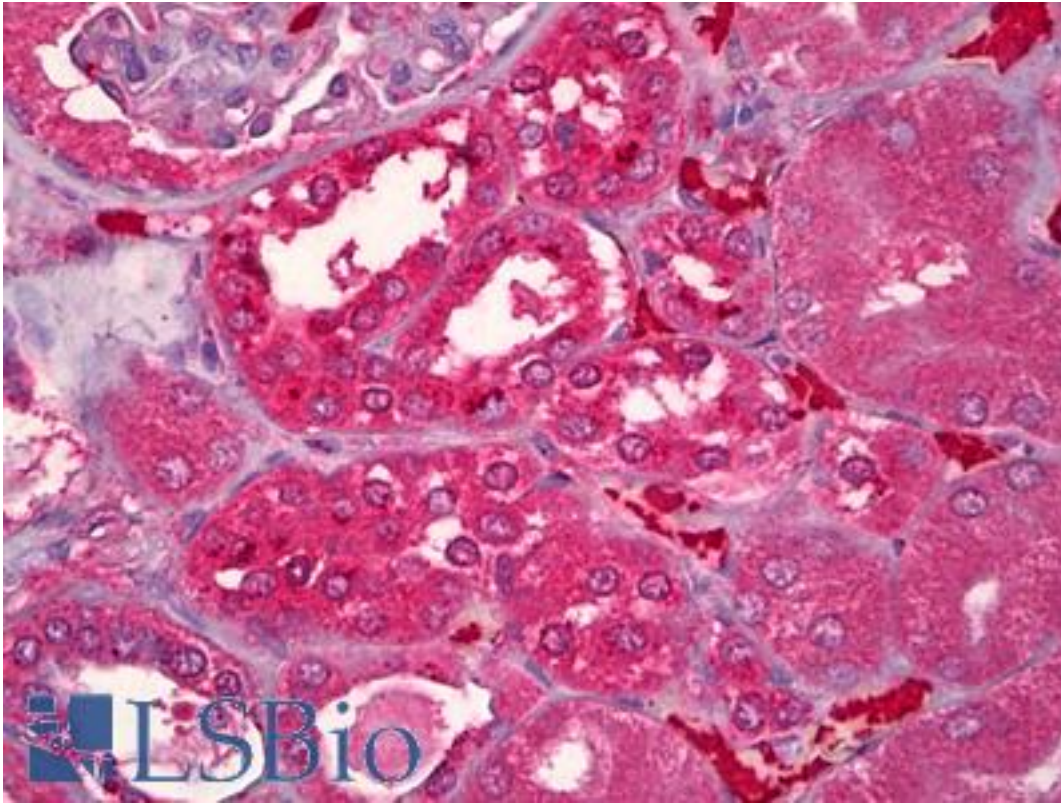


AGT / Angiotensinogen Rabbit anti-Human Monoclonal (Internal) (EPR2930(2)) Antibody - LS-B6575 - LSBio

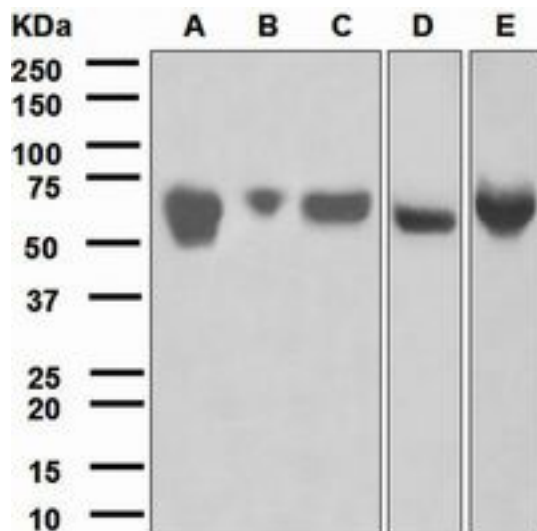
CatalogID:	LS-B6575
Validation:	This antibody replaces catalog number LS-C138044. It has been validated for use in the following assays: IHC-P.
Target:	angiotensinogen (serpin peptidase inhibitor, clade A, member 8) (AGT)
Synonyms:	AGT Antibody, Angiotensin I Antibody, ANHU Antibody, Angiotensinogen Antibody, Pre-angiotensinogen Antibody, Angiotensin II Antibody, SERPINA8 Antibody, Serpin A8 Antibody
Family / Subfamily:	Hormone / not assigned-Hormone
Host	AGT antibody was produced in Rabbit
Clonality:	Monoclonal
Clone Name:	EPR2930(2)
Immunogen Species:	AGT / Angiotensinogen antibody was raised against Human
Antigen Type:	Synthetic peptide
Immunogen:	AGT / Angiotensinogen antibody was raised against synthetic peptide
Specificity:	Human Angiotensinogen.
Epitope:	Internal
Reactivity:	Human
Purification:	Tissue culture supernatant
Presentation:	Tris-Glycine-NaCl or PBS, pH 7.2-7.4, 40-50% Glycerol, 0.01% sodium azide, 0.05% BSA
Recommended Storage:	Short term 4°C, long term aliquot and store at -20°C, avoid freeze thaw cycles.
Uses:	IHC - Paraffin (1:50), ICC (1:500 - 1:1000), Western blot (1:10000 - 1:50000), Immunoprecipitation (1:10 - 1:100), Flow Cytometry (1:100 - 1:500) (Optimal dilution to be determined by the researcher)
Size:	50 µl

Immunohistochemistry Image:



Anti-AGT / Angiotensinogen antibody IHC of human kidney. Immunohistochemistry of formalin-fixed, paraffin-embedded tissue after heat-induced antigen retrieval. Antibody LS-B6575 dilution 1:50.

Western Blot Image:



Western blot analysis on (A) fetal kidney, (B) fetal artery, (C) fetal heart, (D) HepG2, and (E) human plasma lysates using anti-Angiotensinogen antibody.

Requested From:

Japan

Laboratory Reagent For In Vitro Research Use Only

Not for resale without prior written consent from LifeSpan BioSciences, Inc.

Created on 9/24/2014

© 2014 LifeSpan BioSciences