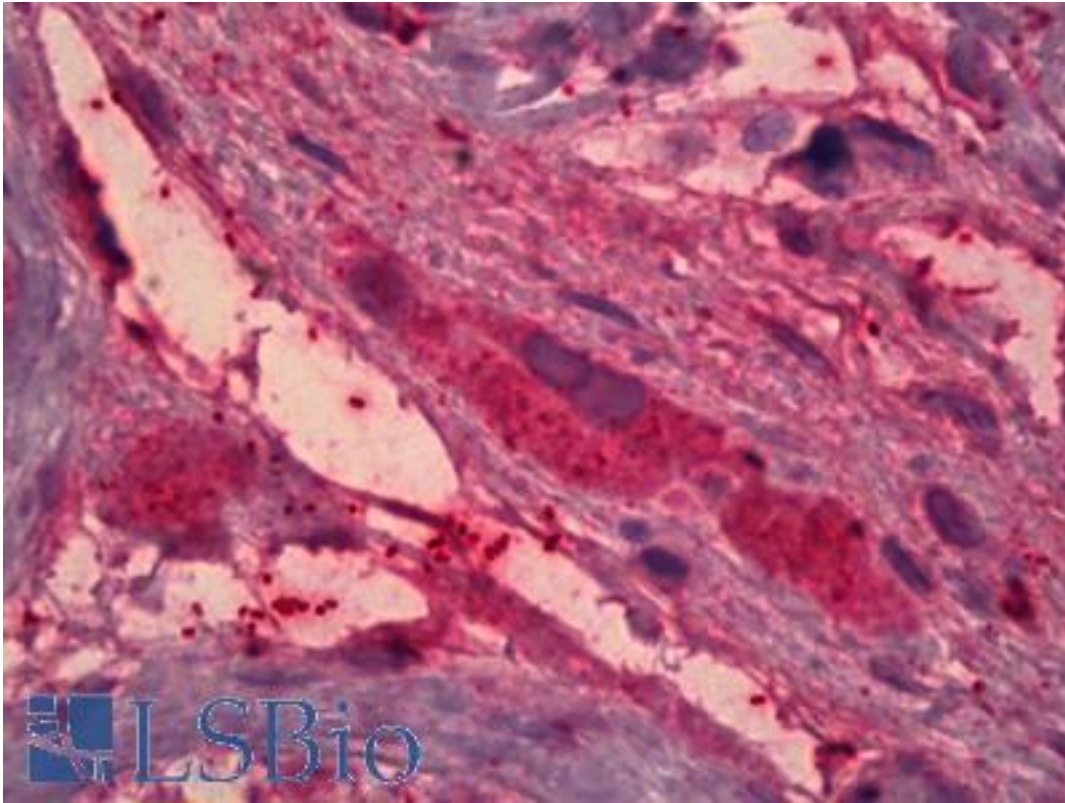


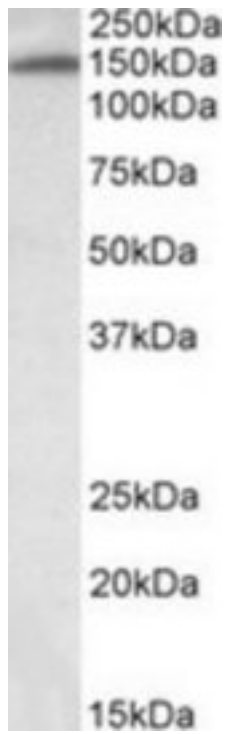
ITIH4 / gp120 Goat anti-Human Polyclonal (C-Terminus) Antibody - LS-B6574 - LSBio	
CatalogID:	LS-B6574
Validation:	This antibody replaces catalog number LS-C139823. It has been validated for use in the following assays: IHC-P.
Target:	inter-alpha-trypsin inhibitor heavy chain family, member 4 (ITIH4)
Synonyms:	ITIH4 Antibody, gp120 Antibody, H4P Antibody, ITIHL1 Antibody, PK120 Antibody, ITI heavy chain H4 Antibody, PK-120 Antibody, IHRP Antibody, ITI-HC4 Antibody
Host	ITIH4 antibody was produced in Goat
Clonality:	Polyclonal
Immunogen Species:	ITIH4 / gp120 antibody was raised against Human
Antigen Type:	Synthetic peptide
Immunogen:	ITIH4 / gp120 antibody was raised against synthetic peptide C-SDDGRRTLRVQGND from the C-terminus of human ITIH4 (NP_002209.2; NP_001159921.1). Percent identity with other species by BLAST analysis: Human (100%), Gorilla (93%), Orangutan (93%), Gibbon (86%), Monkey (86%).
Specificity:	Human ITIH4. This antibody is expected to recognize both reported isoforms (NP_002209.2; NP_001159921.1).
Epitope:	C-Terminus
Reactivity:	Human
Predicted Reactivity:	Gorilla, Orangutan
Purification:	Immunoaffinity purified
Presentation:	Tris-buffered saline, pH 7.3, 0.5% BSA, 0.02% sodium azide
Recommended Storage:	Short term 4°C, long term aliquot and store at -20°C, avoid freeze thaw cycles.
Usage Summary:	Peptide ELISA: antibody detection limit dilution 1:16000. Western blot: Approx 150kD band observed in Human Placenta lysates (calculated MW of 103kD according to NP_002209.2). The observed molecular weight corresponds to the glycosylated form. Recommended concentration: 0.03-0.1 ug/ml.
Uses:	IHC - Paraffin (5 µg/ml), Western blot (0.03 - 0.1 µg/ml), ELISA (1:16000) (Optimal dilution to be determined by the researcher)
Size:	50 µg
Concentration:	0.5 mg/ml

Immunohistochemistry Image:



Anti-ITIH4 antibody IHC of human testis, Leydig cells. Immunohistochemistry of formalin-fixed, paraffin-embedded tissue after heat-induced antigen retrieval. Antibody LS-B6574 concentration 5 ug/ml.

Western Blot Image:



ITI4 antibody (0.03 ug/ml) staining of Human Placenta lysate (35 ug protein/ml in RIPA buffer). Primary incubation was 1 hour. Detected by chemiluminescence.

Requested From:

Japan

Laboratory Reagent For In Vitro Research Use Only

Not for resale without prior written consent from LifeSpan BioSciences, Inc.

Created on 9/24/2014

© 2014 LifeSpan BioSciences