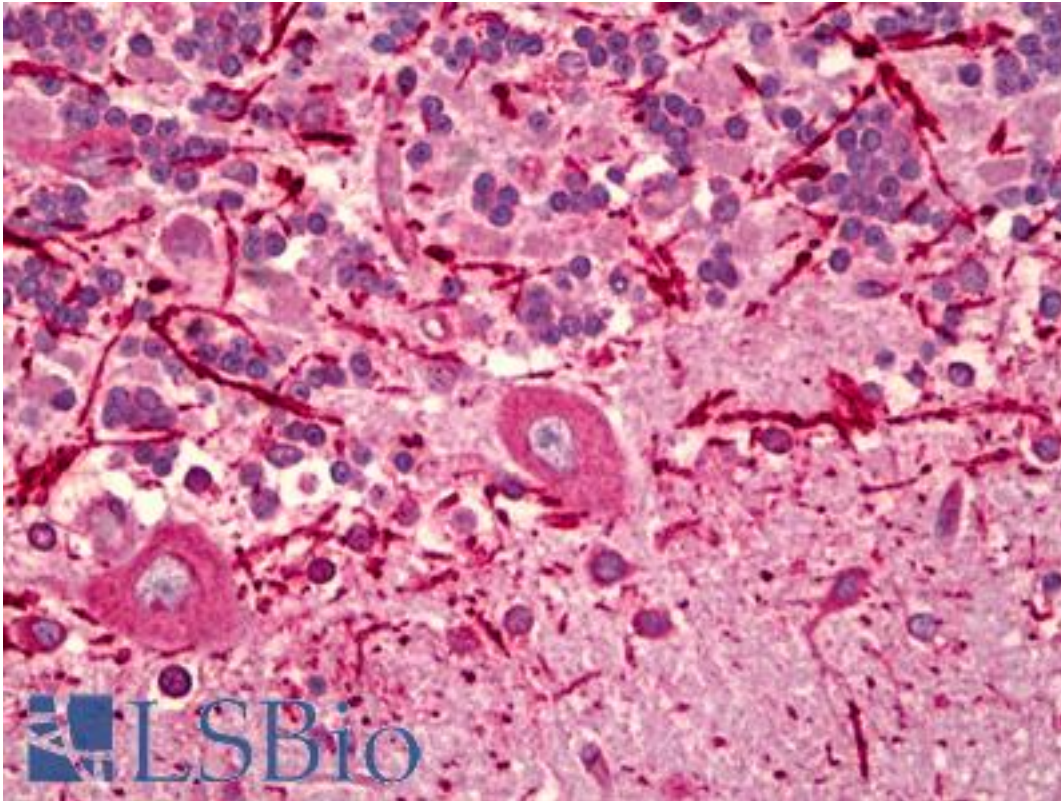


KDEL / KDEL Receptor Mouse anti-Bovine Monoclonal Antibody - LS-B6573 - LSBio

CatalogID:	LS-B6573
Validation:	This antibody replaces catalog number LS-C123931. It has been validated for use in the following assays: IHC-P.
Target:	KDEL Receptor (KDEL R)
Host	Mouse
Clonality:	Monoclonal
Isotype:	IgG1
Immunogen Species:	Bovine
Antigen Type:	Synthetic peptide - KLH conjugated
Immunogen:	Synthetic peptide corresponding to 21aa of bovine KDEL receptor (KLH).
Specificity:	Recognizes bovine KDEL receptor at ~25kD. Species cross-reactivity: human, monkey, mouse, rat, hamster, rabbit, porcine, sheep, canine, chicken, Drosophila, Xenopus.
Reactivity:	Bovine, Human, Monkey, Mouse, Rat, Dog, Hamster, Pig, Rabbit, Sheep, Chicken, Xenopus, Drosophila
Purification:	Protein G purified
Presentation:	PBS, pH 7.2, 0.09% sodium azide, 50% glycerol
Recommended Storage:	May be stored at 4°C for short-term only. For long-term storage, aliquot and store at -20°C. Aliquots are stable for at least 12 months at -20°C.
Usage Summary:	Suitable for use in ELISA, Western Blot, Immunohistochemistry and Immunocytochemistry. Western Blot: 1:1000.
Uses:	IHC - Paraffin (10 µg/ml), ICC, Western blot (1:1000), ELISA (Optimal dilution to be determined by the researcher)
Size:	50 µg
Concentration:	1 mg/ml

Immunohistochemistry Image:



Anti-KDEL Receptor antibody IHC of human brain, cerebellum. Immunohistochemistry of formalin-fixed, paraffin-embedded tissue after heat-induced antigen retrieval. Antibody LS-B6573 concentration 10 ug/ml.

Requested From:

Japan

Laboratory Reagent For In Vitro Research Use Only

Not for resale without prior written consent from LifeSpan BioSciences, Inc.

Created on 9/24/2014

© 2014 LifeSpan BioSciences