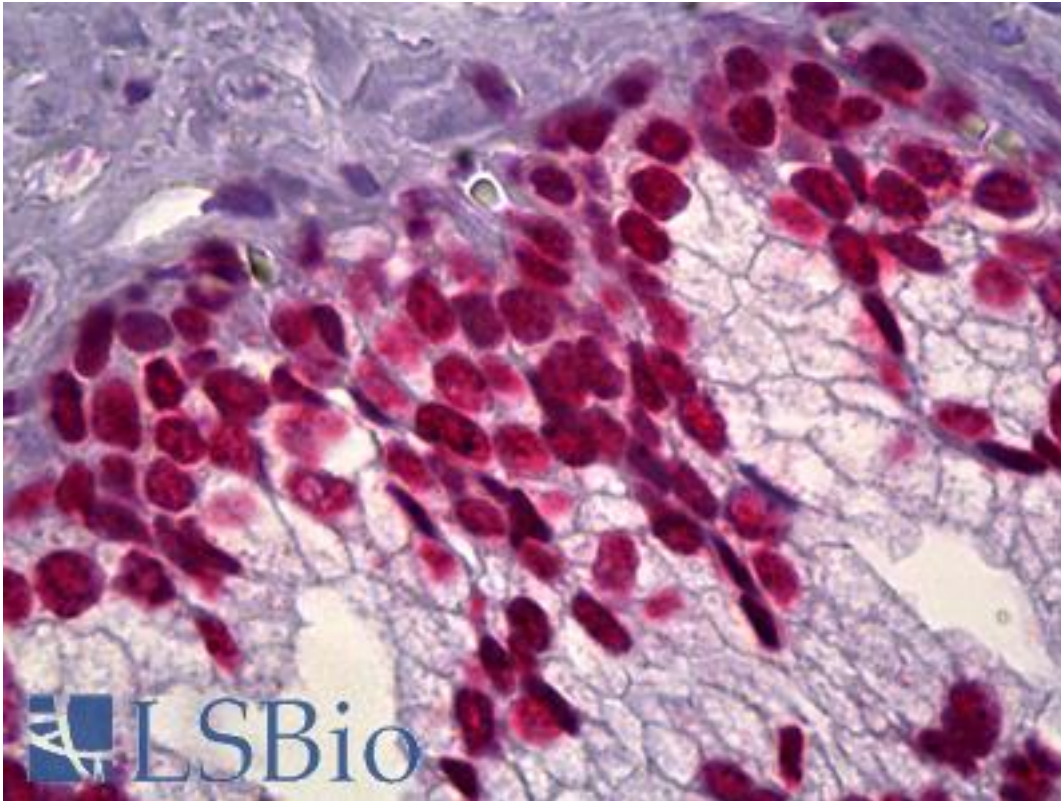


**DNA ds Mouse anti-Human Monoclonal (AE-2) Antibody - LS-B6572 - LSBio**

|                             |   |
|-----------------------------|---|
| <b>CatalogID:</b>           | LS-B6572  |
| <b>Validation:</b>          | This antibody replaces catalog number LS-C121734. It has been validated for use in the following assays: IHC-P.   |
| <b>Target:</b>              | Deoxyribonucleic acid (DNA), ds   |
| <b>Host</b>                 | Deoxyribonucleic acid (DNA), ds antibody was produced in Mouse  |
| <b>Clonality:</b>           | Monoclonal  |
| <b>Isotype:</b>             | IgG3  |
| <b>Clone Name:</b>          | AE-2  |
| <b>Immunogen Species:</b>   | DNA ds antibody was raised against Human  |
| <b>Antigen Type:</b>        | Cells   |
| <b>Immunogen:</b>           | DNA ds antibody was raised against nuclei of Raji Burkitt's lymphoma cells.   |
| <b>Specificity:</b>         | Recognizes double stranded DNA expressed in the nucleus of human cells. Produces a homogeneous staining pattern in the nucleus of normal and malignant cells.   |
| <b>Reactivity:</b>          | Human   |
| <b>Purification:</b>        | Purified  |
| <b>Presentation:</b>        | PBS, 0.05% sodium azide   |
| <b>Recommended Storage:</b> | May be stored at 4°C for short-term only. Aliquot to avoid repeated freezing and thawing. Store at -20°C. Aliquots are stable for at least 12 months  |
| <b>Usage Summary:</b>       | Suitable for use in Flow Cytometry, Immunohistochemistry and Immunocytochemistry. Immunohistochemistry: Paraformaldehyde fixed or frozen tissue and formalin fixed paraffin-embedded tissue sections. |
| <b>Uses:</b>                | IHC - Paraffin (1:50), IHC - Frozen, ICC, Flow Cytometry (Optimal dilution to be determined by the researcher)  |
| <b>Size:</b>                | 50 µg   |
| <b>Concentration:</b>       | 0.1 mg/ml   |

**Immunohistochemistry Image:**



Anti-DNA ds antibody IHC of human prostate. Immunohistochemistry of formalin-fixed, paraffin-embedded tissue after heat-induced antigen retrieval. Antibody LS-B6572 dilution 1:50.

**Requested From:**

Japan

Laboratory Reagent For In Vitro Research Use Only

Not for resale without prior written consent from LifeSpan BioSciences, Inc.

Created on 9/24/2014

© 2014 LifeSpan BioSciences