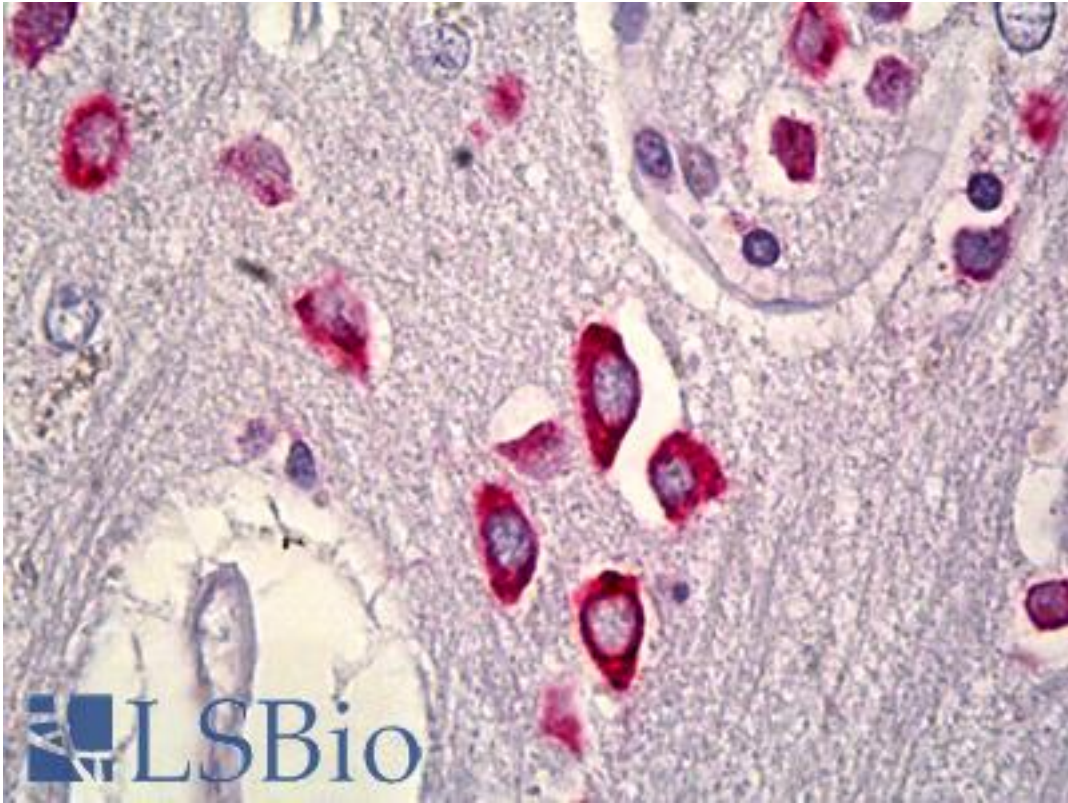


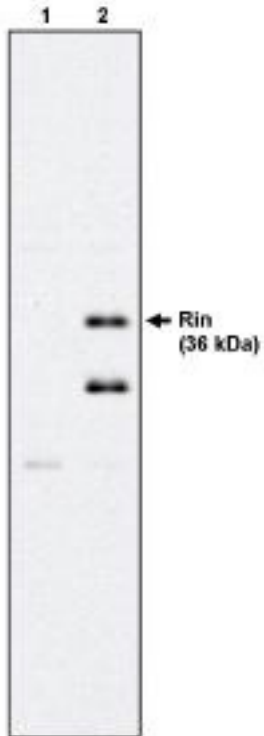
RIT2 / RIN Mouse Monoclonal (27G2) Antibody - LS-B6571 - LSBio	
<b>CatalogID:</b>	LS-B6571
<b>Validation:</b>	This antibody replaces catalog number LS-C26665. It has been validated for use in the following assays: IHC-P.
<b>Target:</b>	Ras-like without CAAX 2 (RIT2)
<b>Synonyms:</b>	RIT2 Antibody, RIN Antibody, Ras-like without CAAX 2 Antibody, RIBA Antibody, GTP-binding protein Rit2 Antibody, GTP-binding protein Roc2 Antibody, Ric-like, expressed in neurons Antibody, ROC2 Antibody
<b>Family / Subfamily:</b>	Ras GTPase superfamily IPR001806 / not assigned-Ras GTPase superfamily IPR001806
<b>Host</b>	RIT2 antibody was produced in Mouse
<b>Clonality:</b>	Monoclonal
<b>Isotype:</b>	IgG2b
<b>Clone Name:</b>	27G2
<b>Immunogen:</b>	RIT2 / RIN antibody was raised against full-length recombinant human Rin protein
<b>Reactivity:</b>	Human, Mouse
<b>Purification:</b>	Sterile filtered
<b>Presentation:</b>	20 mM sodium phosphate, 150 mM sodium chloride, 50% glycerol at pH 7.5 and 3 mM sodium azide. Sourced in TCS.
<b>Recommended Storage:</b>	Store at -20°C. Aliquot to avoid freeze/thaw cycles. Store undiluted.
<b>Uses:</b>	IHC - Paraffin (1:50), Western blot (Optimal dilution to be determined by the researcher)
<b>Size:</b>	50 µg
<b>Concentration:</b>	1 mg/ml

**Immunohistochemistry Image:**



Anti-RIT2 antibody IHC of human brain, cortex. Immunohistochemistry of formalin-fixed, paraffin-embedded tissue after heat-induced antigen retrieval. Antibody LS-B6571 dilution 1:50.

**Western Blot Image:**



Western blot of Rin antibody (LS-B6571) on 293 cells expressing HA-tagged Rit (1) and HA-tagged Rin (2).

**Requested From:**

Japan

Laboratory Reagent For In Vitro Research Use Only

Not for resale without prior written consent from LifeSpan BioSciences, Inc.

Created on 9/24/2014

© 2014 LifeSpan BioSciences