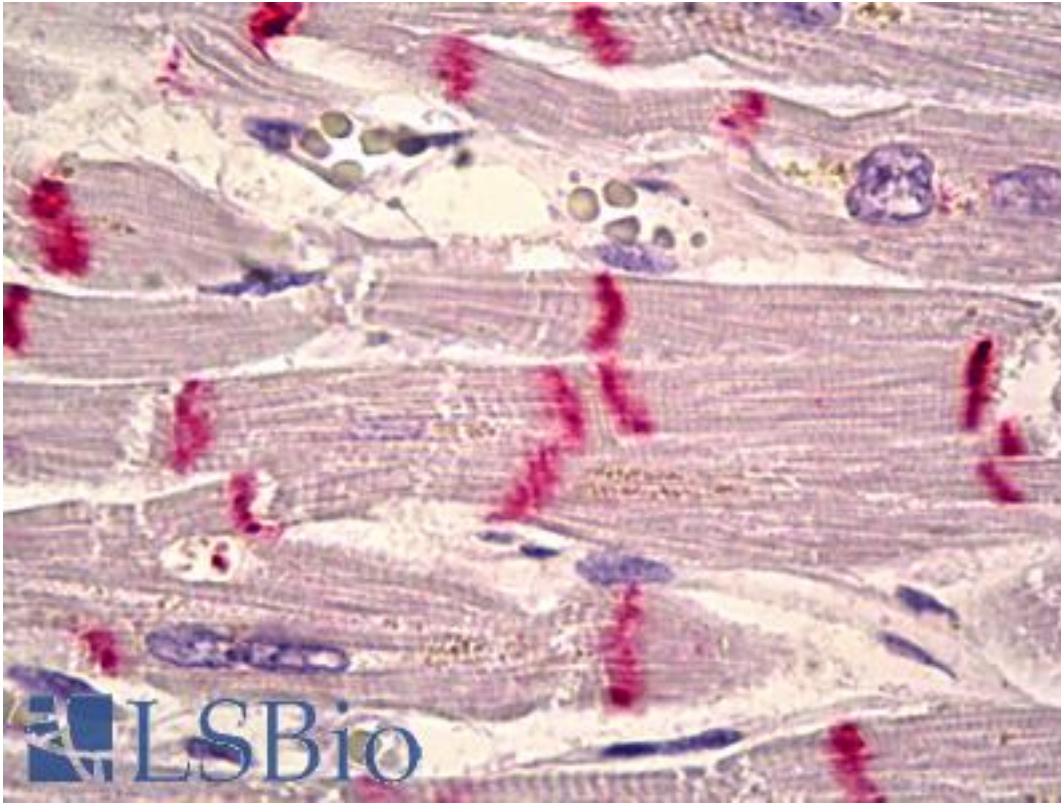


CDH2 / N Cadherin Mouse anti-Chicken Monoclonal (GC-4) Antibody - LS-B6549 - LSBio	
<b>CatalogID:</b>	LS-B6549
<b>Validation:</b>	This antibody replaces catalog number LS-C77509. It has been validated for use in the following assays: IHC-P.
<b>Target:</b>	cadherin 2, type 1, N-cadherin (neuronal) (CDH2)
<b>Synonyms:</b>	CDH2 Antibody, CDw325 Antibody, CDHN Antibody, Cadherin-2 Antibody, CD325 Antibody, CD325 antigen Antibody, N Cadherin Antibody, N-cadherin Antibody, NCAD Antibody, Neural cadherin Antibody, N-cadherin 1 Antibody, Neural-cadherin Antibody
<b>Family / Subfamily:</b>	Cadherin / not assigned-Cadherin
<b>Host</b>	CDH2 antibody was produced in Mouse
<b>Clonality:</b>	Monoclonal
<b>Isotype:</b>	IgG1
<b>Clone Name:</b>	GC-4
<b>Immunogen Species:</b>	CDH2 / N Cadherin antibody was raised against Chicken
<b>Antigen Type:</b>	Recombinant protein
<b>Immunogen:</b>	CDH2 / N Cadherin antibody was raised against recombinant full length protein (Chicken heart).
<b>Specificity:</b>	Monoclonal Anti-N Cadherin/ACAM is specific for a polypeptide (135kD), isolated from a freshly prepared extract of rat or chicken cardiac muscle, when assayed by immunoblotting. This antibody reacts with the ACAM molecule in tissues and cells from human, chicken, rat, mouse, and rabbit. Species cross-reactivity: Cross-reacts with Chicken. Expected to cross-react with Human, Mouse, Rat and Rabbit due to sequence homology.
<b>Reactivity:</b>	Chicken, Human, Mouse, Rat, Rabbit
<b>Purification:</b>	Ascites
<b>Presentation:</b>	15 mM sodium azide.
<b>Recommended Storage:</b>	Short term 4°C, long term aliquot and store at -20°C, avoid freeze thaw cycles.
<b>Usage Summary:</b>	Suitable for use in Immunofluorescence and Western Blot.
<b>Uses:</b>	IHC - Paraffin (1:50), Immunofluorescence, Western blot (Optimal dilution to be determined by the researcher)
<b>Size:</b>	50 µl

**Immunohistochemistry Image:**



Anti-CDH2 / N Cadherin antibody IHC of human heart, intercalated disk.  
Immunohistochemistry of formalin-fixed, paraffin-embedded tissue after heat-induced antigen retrieval. Antibody LS-B6549 dilution 1:50.

**Requested From:**

Japan

Laboratory Reagent For In Vitro Research Use Only

Not for resale without prior written consent from LifeSpan BioSciences, Inc.

Created on 9/24/2014

© 2014 LifeSpan BioSciences