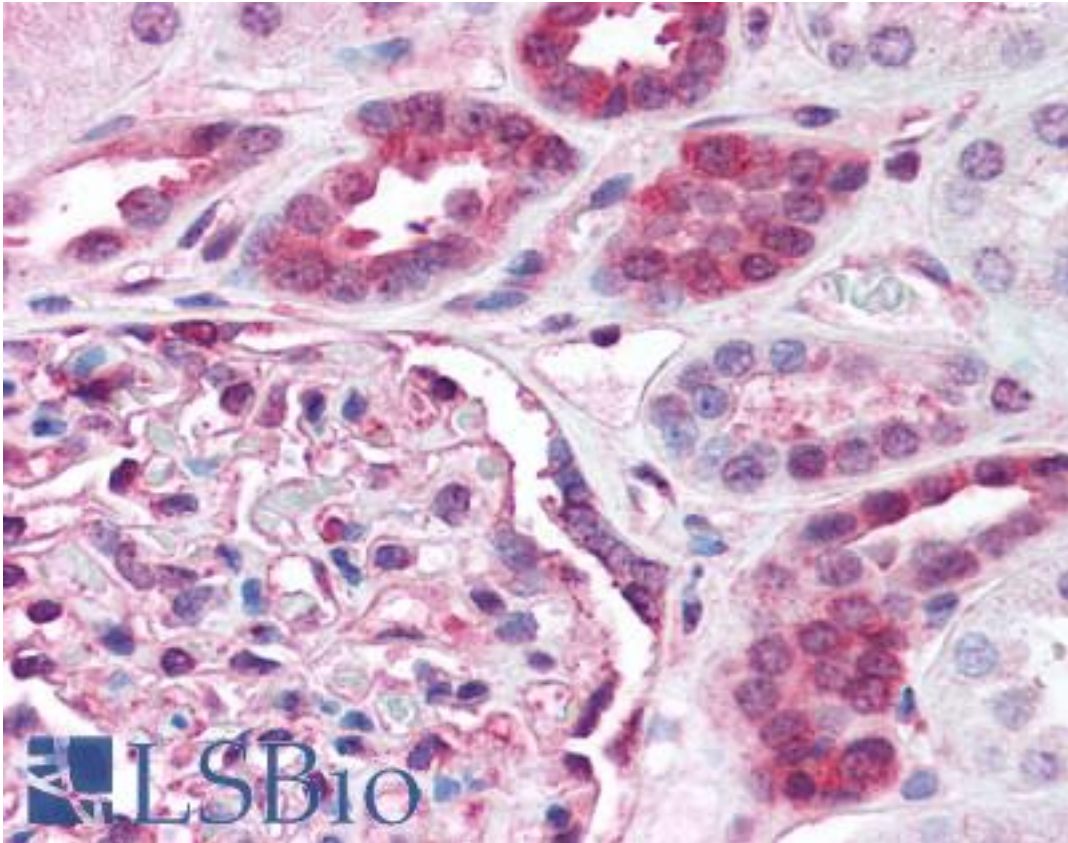


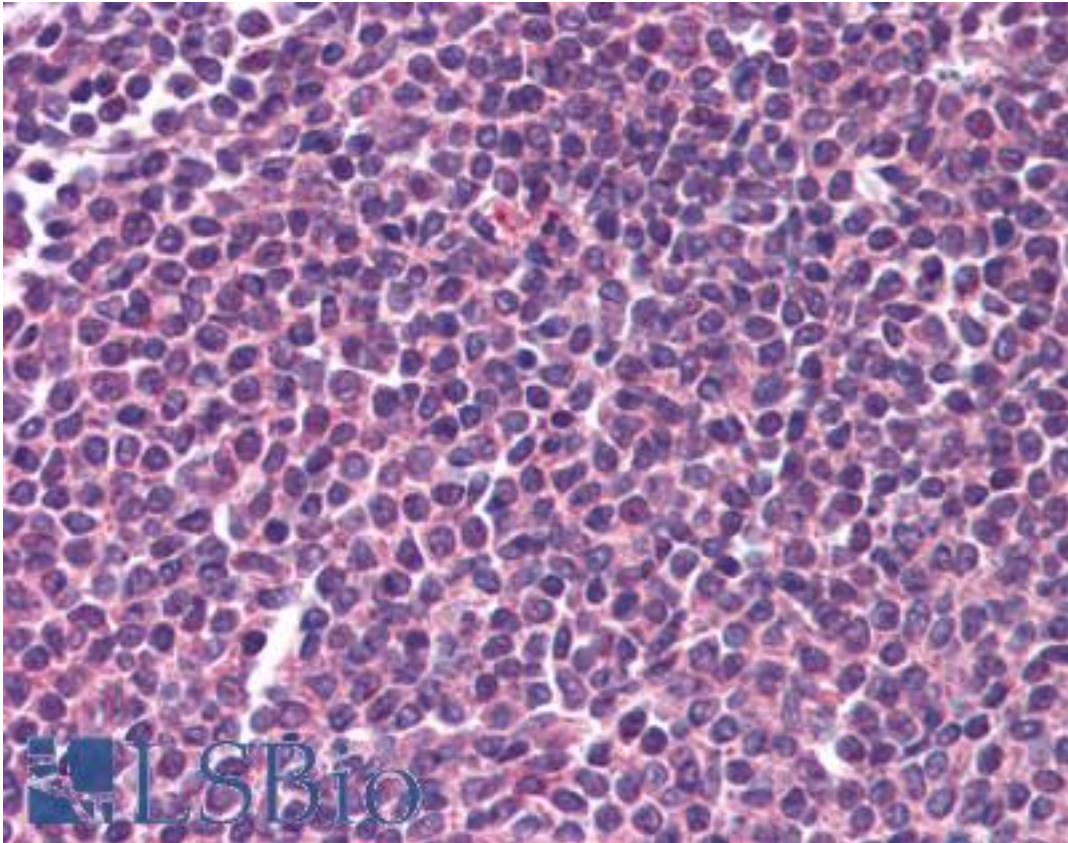
RELA / NFkB p65 Rabbit anti-Human Polyclonal (C-Terminus) Antibody - LS-B653 - LSBio	
CatalogID:	LS-B653
Validation:	This antibody replaces catalog number LS-C18902. It has been validated for use in the following assays: IHC.
Target:	v-rel avian reticuloendotheliosis viral oncogene homolog A (RELA)
Synonyms:	RELA Antibody, NF-kappa-B p65delta3 Antibody, NFkB3 Antibody, p65 Antibody, Transcription factor p65 Antibody
Host	RELA antibody was produced in Rabbit
Clonality:	Polyclonal
Immunogen Species:	RELA / NFkB p65 antibody was raised against Human
Specificity:	NFkB p65 (Rel A) peptide corresponding to a region near the C-terminus of the human protein conjugated to Keyhole Limpet Hemocyanin (KLH).
Epitope:	C-Terminus
Reactivity:	Human, Mouse, Rat
Purification:	Delipidated and defibrinated
Presentation:	Containing 0.01% sodium azide
Recommended Storage:	+4°C or -20°C, Avoid repeated freezing and thawing.
Usage Summary:	Immunohistochemistry: LS-B653 was validated for use in immunohistochemistry on a panel of 21 formalin-fixed, paraffin-embedded (FFPE) human tissues after heat induced antigen retrieval in pH 6.0 citrate buffer. After incubation with the primary antibody, slides were incubated with biotinylated secondary antibody, followed by alkaline phosphatase-streptavidin and chromogen. The stained slides were evaluated by a pathologist to confirm staining specificity. The optimal working concentration for LS-B653 was determined to be 1:500.
Uses:	IHC - Paraffin (1:500), Immunofluorescence, Western blot, Immunoprecipitation, ELISA, Gel shift (Optimal dilution to be determined by the researcher)
Size:	50 µl
Concentration:	90 mg/ml

Immunohistochemistry Image:



Anti-RELA antibody IHC of human kidney. Immunohistochemistry of formalin-fixed, paraffin-embedded tissue after heat-induced antigen retrieval. Antibody LS-B653 dilution 1:500.

Immunohistochemistry Image:



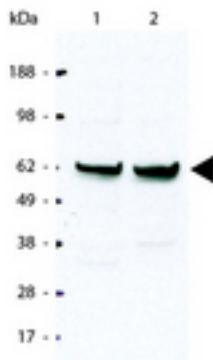
Anti-RELA antibody IHC of human spleen. Immunohistochemistry of formalin-fixed, paraffin-embedded tissue after heat-induced antigen retrieval. Antibody LS-B653 dilution 1:500.

Western Blot Image:



Immunoblot of HeLa cell extract using anti-NFkb p65 (RelA) at a 1:5000 dilution. A predominant band ~65 kDa (arrowhead) corresponding to NFkb p65 Rel A is observed

Western Blot Image:



Anti-NFkb p 65 Rel A Antibody - Western Blot. Western blot of HeLa cell extract. A predominant band ~65 kD (arrowhead) corresponding to NFkb p65 Rel A is observed. All incubations except color development were performed using TBS supplemented with 0.1% Tween-20 at room temperature. The membrane was blocked in 5% dry milk for 2 h. After washing, a 1:5000 dilution of the primary antibody was added to the membrane and incubated for 2 h. Washes with buffer were performed 4 times for 5 each. The western blot was incubated with secondary antibody (HRP Goat-a-Rabbit IgG [H&L]) diluted 1:2000 for 1 h. Washes with TBS preceded color development.

Requested From:

Japan

Laboratory Reagent For In Vitro Research Use Only

Not for resale without prior written consent from LifeSpan BioSciences, Inc.

Created on 9/24/2014

© 2014 LifeSpan BioSciences