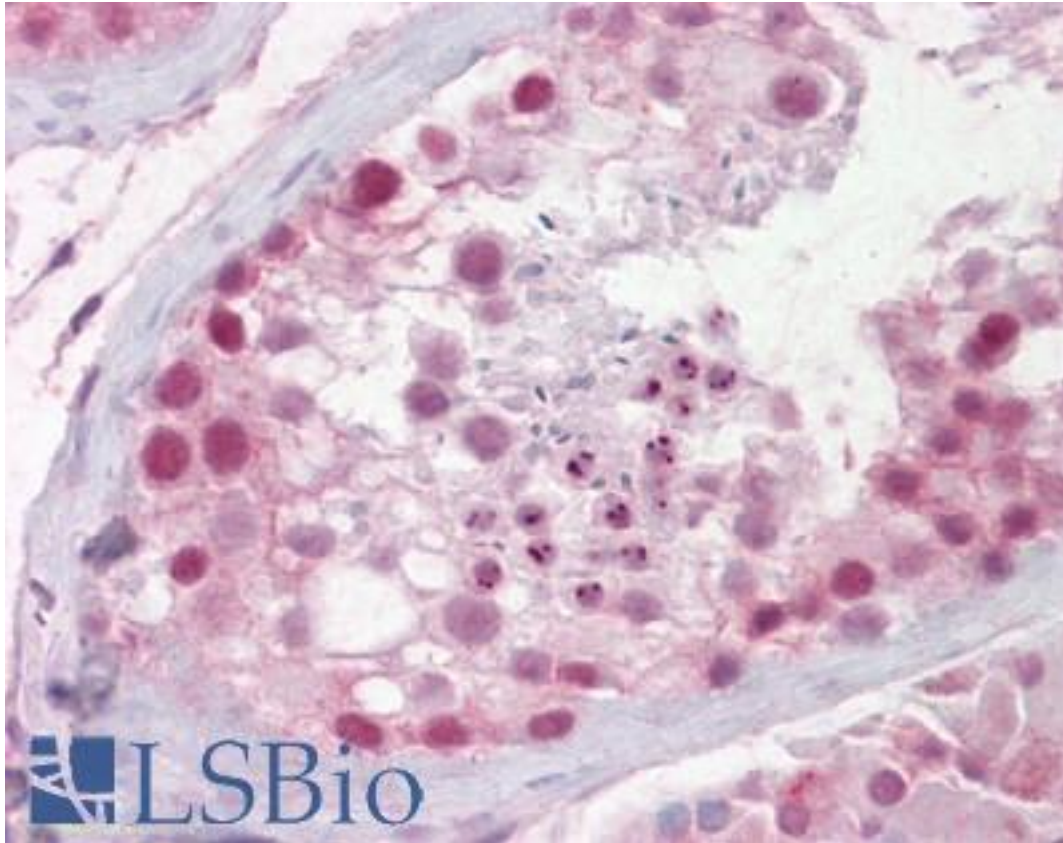


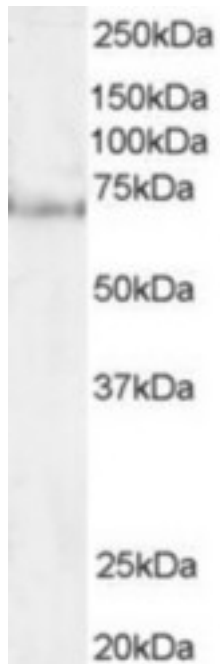
PES1 Goat anti-Human Polyclonal (N-Terminus) Antibody - LS-B6528 - LSBio	
CatalogID:	LS-B6528
Validation:	This antibody replaces catalog number LS-C20190. It has been validated for use in the following assays: IHC-P.
Target:	pescadillo ribosomal biogenesis factor 1 (PES1)
Synonyms:	PES1 Antibody, Pescadillo homolog Antibody, PES Antibody
Host	PES1 antibody was produced in Goat
Clonality:	Polyclonal
Immunogen Species:	PES1 antibody was raised against Human
Antigen Type:	Synthetic peptide
Immunogen:	PES1 antibody was raised against synthetic peptide GGLEKKKYERGSA-C from the N-terminus of human PES1 (NP_055118.1). Percent identity by BLAST analysis: Human, Gorilla, Orangutan, Marmoset, Mouse, Rat, Bovine, Dog, Horse, Rabbit, Pig, Opossum, Platypus, Xenopus (100%); Salmon (92%); Pufferfish, Zebrafish (85%).
Specificity:	Human PES1.
Epitope:	N-Terminus
Reactivity:	Human, Gorilla, Orangutan, Monkey, Mouse, Rat, Bovine, Dog, Horse, Pig, Rabbit, Xenopus
Purification:	Immunoaffinity purified
Presentation:	Tris-buffered saline, pH 7.3, 0.5% BSA, 0.02% sodium azide
Recommended Storage:	Store at -20°C. Minimize freezing and thawing.
Uses:	IHC - Paraffin (2.5 - 3.75 µg/ml), Western blot (1 - 3 µg/ml), ELISA (1:32000) (Optimal dilution to be determined by the researcher)
Size:	50 µg
Concentration:	0.5 mg/ml

Immunohistochemistry Image:



Anti-PES1 antibody IHC of human testis. Immunohistochemistry of formalin-fixed, paraffin-embedded tissue after heat-induced antigen retrieval. Antibody LS-B6528 concentration 2.5 ug/ml.

Western Blot Image:



(1 ug/ml) Staining of HeLa lysate (35 ug protein in RIPA buffer). Primary incubation was 1 hour. Detected by chemiluminescence.

Requested From:

Japan

Laboratory Reagent For In Vitro Research Use Only

Not for resale without prior written consent from LifeSpan BioSciences, Inc.

Created on 9/24/2014

© 2014 LifeSpan BioSciences