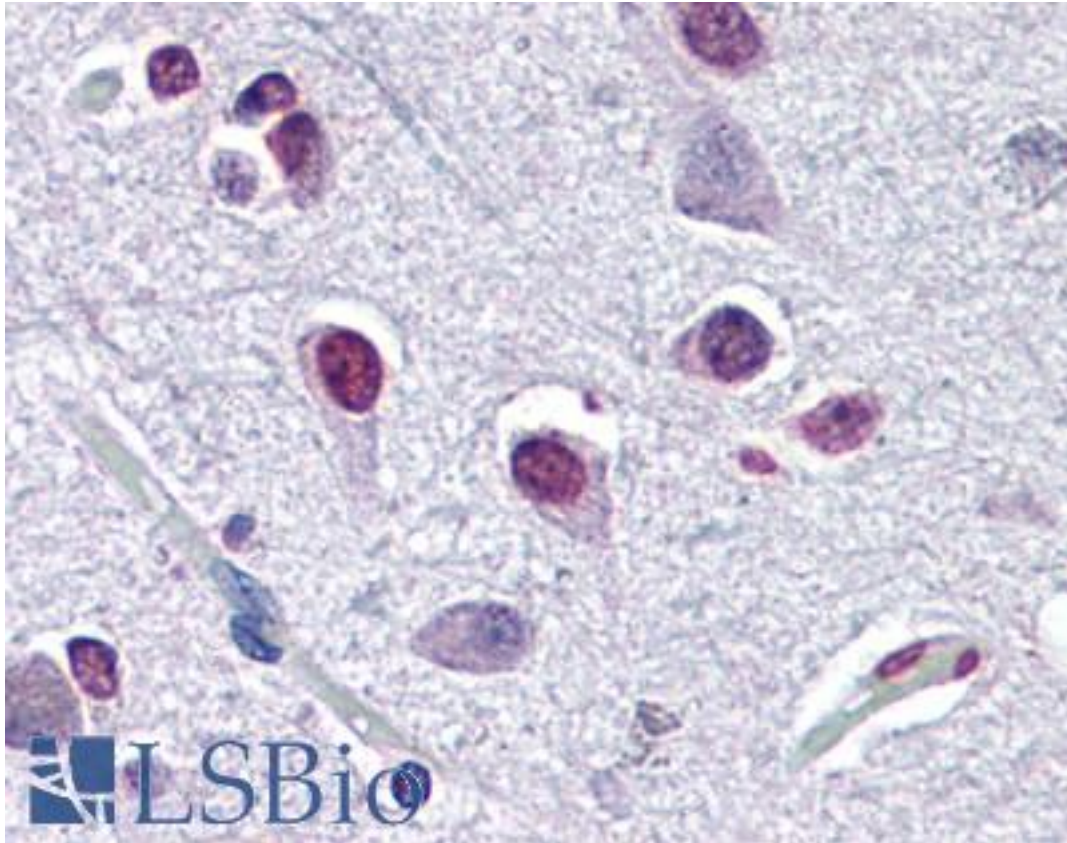


ATF2 Mouse anti-Human Monoclonal (4A3) Antibody - LS-B6524 - LSBio

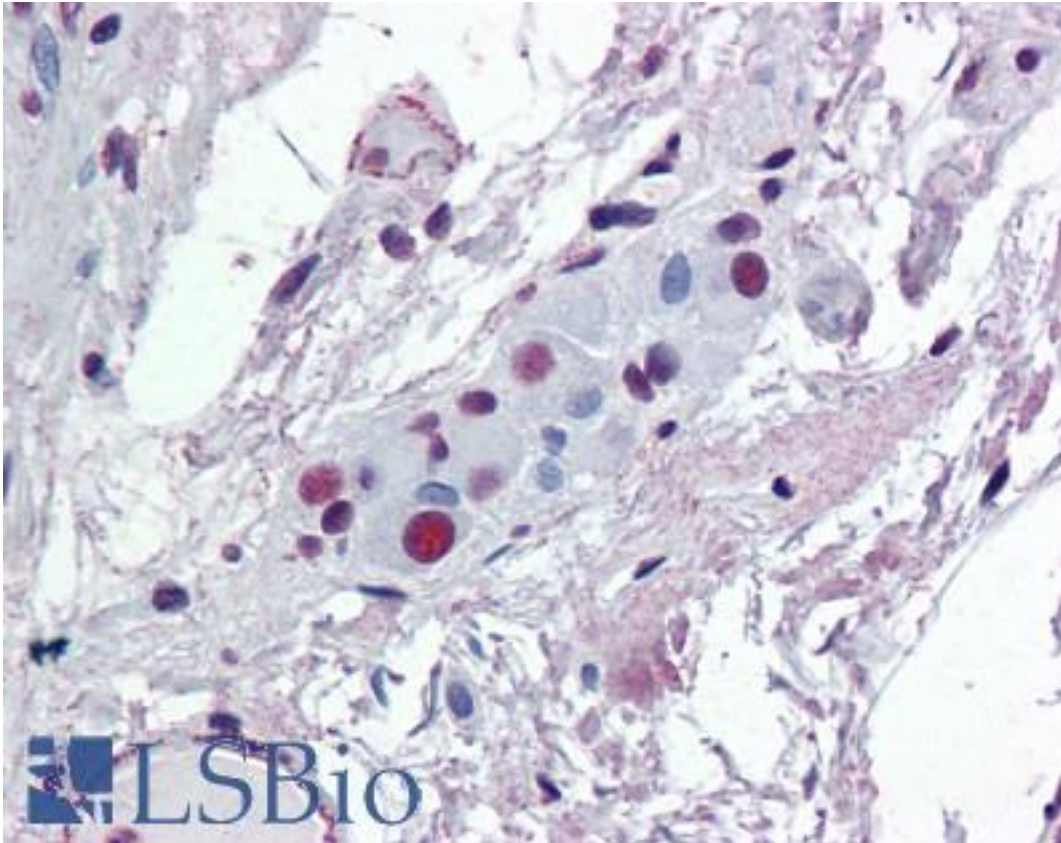
CatalogID:	LS-B6524
Validation:	This antibody replaces catalog number LS-C133135. It has been validated for use in the following assays: IHC-P.
Target:	activating transcription factor 2 (ATF2)
Synonyms:	ATF2 Antibody, CREB-2 Antibody, CRE-BP1 Antibody, CREB2 Antibody, HB16 Antibody, TREB7 Antibody, CREBP1 Antibody
Family / Subfamily:	Transcription factor / not assigned-Transcription factor
Host	ATF2 antibody was produced in Mouse
Clonality:	Monoclonal
Isotype:	IgG1,k
Clone Name:	4A3
Immunogen Species:	ATF2 antibody was raised against Human
Immunogen:	ATF2 antibody was raised against aTF2 (NP_001871, 241 a.a. ~ 340 a.a) full length recombinant protein with GST tag. MW of the GST tag alone is 26 KDa.
Specificity:	Human ATF2
Reactivity:	Human
Purification:	Protein A purified
Presentation:	PBS, pH 7.4
Recommended Storage:	Store at -20°C or lower. Aliquot to avoid repeated freezing and thawing.
Usage Summary:	Immunohistochemistry: Formalin-fixed paraffin-embedded sections. Western Blot: Recombinant protein.
Uses:	IHC - Paraffin (5 µg/ml), Western blot, ELISA (Optimal dilution to be determined by the researcher)
Size:	50 µg
Concentration:	0.34 mg/ml

Immunohistochemistry Image:



Anti-ATF2 antibody IHC of human brain, cortex. Immunohistochemistry of formalin-fixed, paraffin-embedded tissue after heat-induced antigen retrieval. Antibody LS-B6524 concentration 5 ug/ml.

Immunohistochemistry Image:



Anti-ATF2 antibody IHC of human small intestine, submucosal plexus. Immunohistochemistry of formalin-fixed, paraffin-embedded tissue after heat-induced antigen retrieval. Antibody LS-B6524 concentration 5 ug/ml.

Requested From:

Japan

Laboratory Reagent For In Vitro Research Use Only

Not for resale without prior written consent from LifeSpan BioSciences, Inc.

Created on 9/24/2014

© 2014 LifeSpan BioSciences