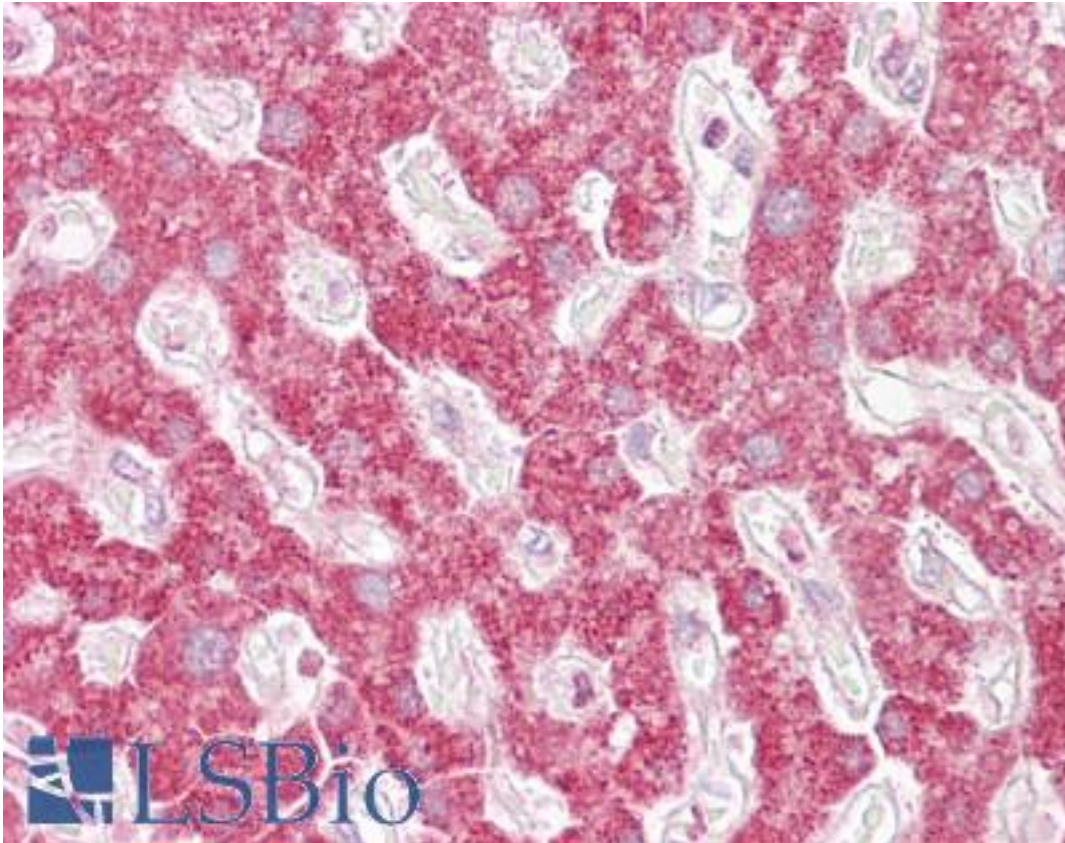


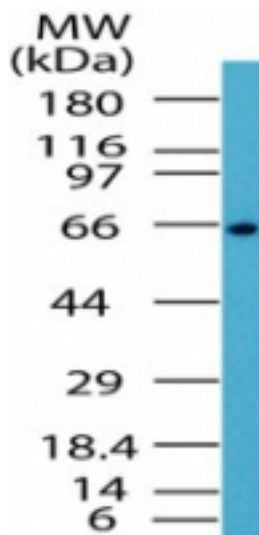
RELA / NFkB p65 Rabbit anti-Human Polyclonal Antibody - LS-B6523 - LSBio	
CatalogID:	LS-B6523
Validation:	This antibody replaces catalog number LS-C47375. It has been validated for use in the following assays: IHC-P.
Target:	v-rel avian reticuloendotheliosis viral oncogene homolog A (RELA)
Synonyms:	RELA Antibody, NF-kappa-B p65delta3 Antibody, NFkB3 Antibody, p65 Antibody, Transcription factor p65 Antibody
Host	RELA antibody was produced in Rabbit
Clonality:	Polyclonal
Immunogen Species:	RELA / NFkB p65 antibody was raised against Human
Immunogen:	RELA / NFkB p65 antibody was raised against a portion of the NF-kB p65 nuclear localization signal (amino acids DTDDRHRIEEKRRKKT) was used as the immunogen. Percent identity by BLAST analysis: Human, Chimpanzee, Gorilla, Orangutan, Gibbon, Monkey, Marmoset, Mouse, Rat, Hamster, Elephant, Panda, Bovine, Dog, Bat, Horse, Pig, Opossum (88%).
Specificity:	A portion of the NF-kB p65 nuclear localization signal (amino acids DTDDRHRIEEKRRKKT)
Reactivity:	Human
Purification:	Immunoaffinity purified
Presentation:	PBS, 0.05% BSA, 0.05% sodium azide.
Recommended Storage:	Long term: -20°C; Short term: +4°C; Avoid freeze-thaw cycles.
Uses:	IHC - Paraffin (10 µg/ml), Western blot (1 - 3 µg/ml) (Optimal dilution to be determined by the researcher)
Size:	50 µg
Concentration:	0.5 mg/ml

Immunohistochemistry Image:



Anti-RELA antibody IHC of human liver. Immunohistochemistry of formalin-fixed, paraffin-embedded tissue after heat-induced antigen retrieval. Antibody LS-B6523 concentration 10 ug/ml.

Western Blot Image:



Western blot of NF- κ B p65-NLS in Jurkat cell lysate using antibody at 1 ug/ml.

Requested From:

Japan

Laboratory Reagent For In Vitro Research Use Only

Not for resale without prior written consent from LifeSpan BioSciences, Inc.

Created on 9/24/2014

© 2014 LifeSpan BioSciences