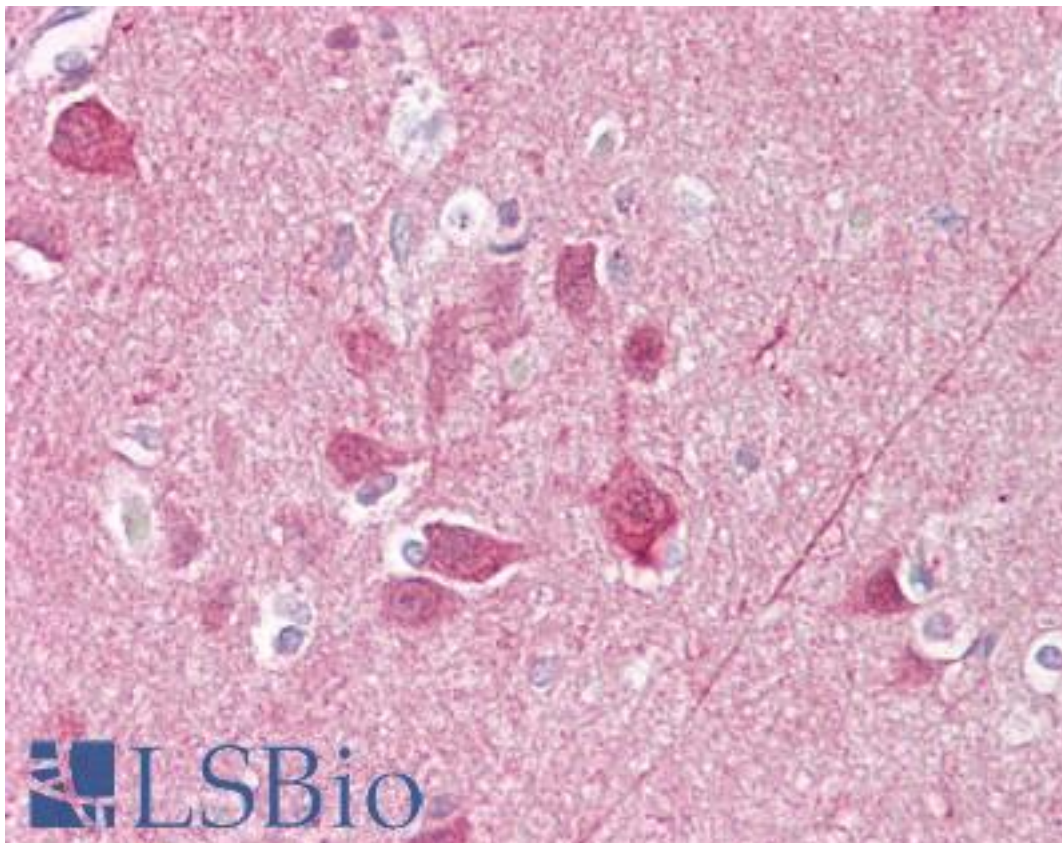


UCHL1 / PGP9.5 Rabbit anti-Human Polyclonal (aa50-100) Antibody - LS-B6518 - LSBio

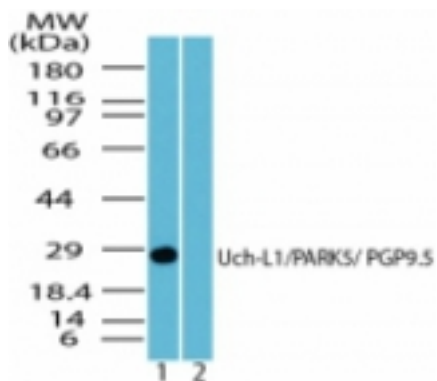
CatalogID:	LS-B6518
Validation:	This antibody replaces catalog number LS-C47300. It has been validated for use in the following assays: IHC-P.
Target:	ubiquitin carboxyl-terminal esterase L1 (ubiquitin thiolesterase) (UCHL1)
Synonyms:	UCHL1 Antibody, Ubiquitin C-terminal hydrolase Antibody, PARK5 Antibody, PGP9.5 Antibody, PGP95 Antibody, Ubiquitin thioesterase L1 Antibody, Neuron cytoplasmic protein 9.5 Antibody, PGP 9.5 Antibody, Uch-L1 Antibody
Family / Subfamily:	Protease / Cysteine C12
Host	UCHL1 antibody was produced in Rabbit
Clonality:	Polyclonal
Isotype:	IgG
Immunogen Species:	UCHL1 / PGP9.5 antibody was raised against Human
Antigen Type:	Synthetic peptide
Immunogen:	UCHL1 / PGP9.5 antibody was raised against synthetic peptide from human UCHL1 / PGP9.5.
Specificity:	A portion of amino acids 50-100 of human Uch-L1
Epitope:	aa50-100
Reactivity:	Human, Monkey, Dog
Purification:	Protein G purified
Presentation:	PBS, 0.2% gelatin, 0.05% sodium azide.
Recommended Storage:	Long term: -20°C; Short term: +4°C; Avoid freeze-thaw cycles.
Uses:	IHC - Paraffin (10 µg/ml), Western blot (0.1 - 1 µg/ml) (Optimal dilution to be determined by the researcher)
Size:	50 µg
Concentration:	0.5 mg/ml

Immunohistochemistry Image:



Anti-UCHL1 / PGP9.5 antibody IHC of human brain, cortex. Immunohistochemistry of formalin-fixed, paraffin-embedded tissue after heat-induced antigen retrieval. Antibody LS-B6518 concentration 10 ug/ml.

Western Blot Image:



Western blot of Uch-L1 in human brain lysate in the 1) absence and 2) presence of immunizing peptide using antibody at 0.2 ug/ml.

Requested From:

Japan

Laboratory Reagent For In Vitro Research Use Only

Not for resale without prior written consent from LifeSpan BioSciences, Inc.

Created on 9/24/2014

© 2014 LifeSpan BioSciences