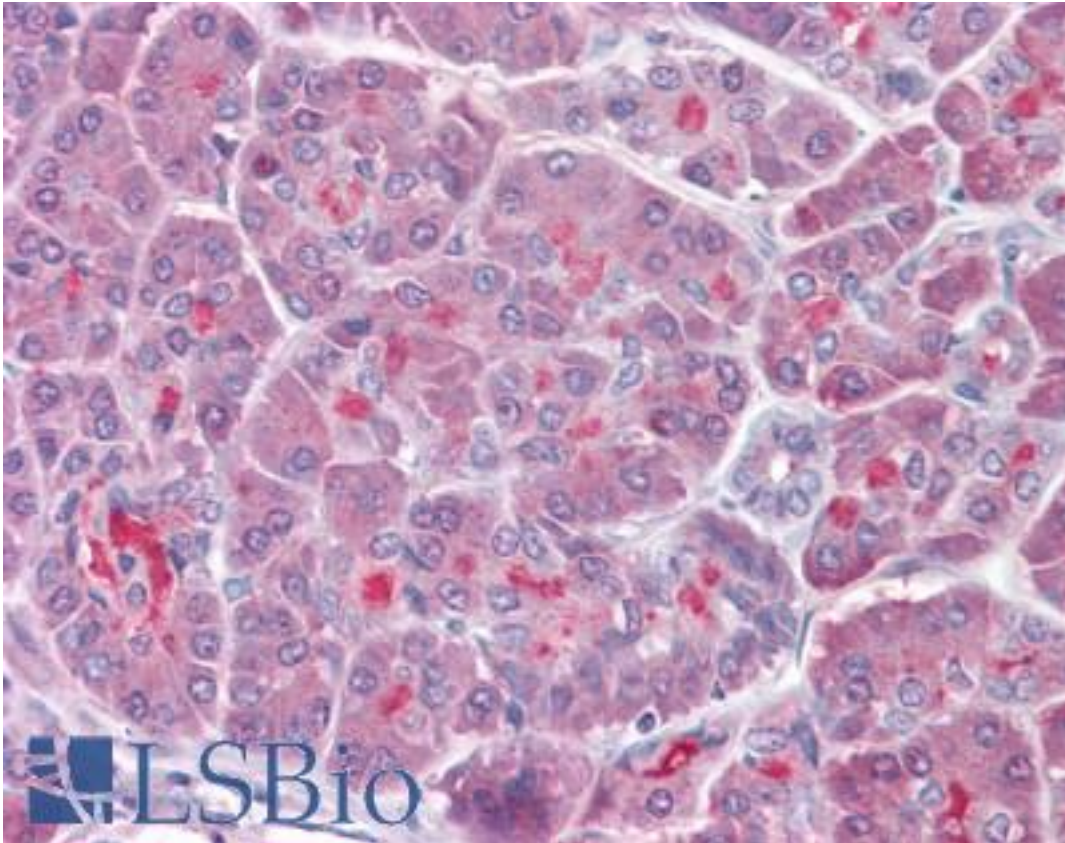


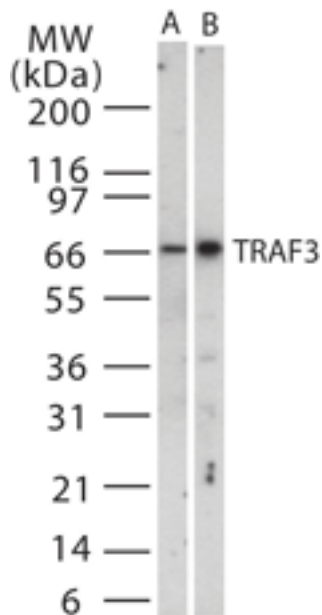
LMP1 / TRAF3 Rabbit anti-Human Polyclonal (aa323-340) Antibody - LS-B6511 - LSBio	
CatalogID:	LS-B6511
Validation:	This antibody replaces catalog number LS-C827. It has been validated for use in the following assays: IHC-P.
Target:	TNF receptor-associated factor 3 (TRAF3)
Synonyms:	TRAF3 Antibody, CAP-1 Antibody, CD40 associated protein 1 Antibody, CD40 binding protein Antibody, CRAF1 Antibody, LMP1 Antibody, LMP1-associated protein 1 Antibody, IIAE5 Antibody, CD40-binding protein Antibody, CD40bp Antibody, LAP1 Antibody
Host	TRAF3 antibody was produced in Rabbit
Clonality:	Polyclonal
Isotype:	IgG
Immunogen Species:	LMP1 / TRAF3 antibody was raised against Human
Antigen Type:	Synthetic peptide
Immunogen:	LMP1 / TRAF3 antibody was raised against synthetic peptide from human TRAF3.
Specificity:	A peptide corresponding to amino acids 323-340 of human TRAF3 was used as the immunogen.
Epitope:	aa323-340
Reactivity:	Human, Mouse
Purification:	Protein G purified
Presentation:	PBS containing 0.05% BSA and 0.05% sodium azide
Recommended Storage:	Long term: -20°C; Short term: +4°C; Avoid freeze-thaw cycles.
Uses:	IHC - Paraffin (10 µg/ml), Western blot (1 - 3 µg/ml) (Optimal dilution to be determined by the researcher)
Size:	50 µl

Immunohistochemistry Image:



Anti-TRAF3 antibody IHC of human pancreas. Immunohistochemistry of formalin-fixed, paraffin-embedded tissue after heat-induced antigen retrieval. Antibody LS-B6511 concentration 10 ug/ml.

Western Blot Image:



Western blot of TRAF3 in (A) HeLa and (B) NIH 3T3 cell lysate using antibody at 2 ug/ml.

Requested From:	Japan
Laboratory Reagent For In Vitro Research Use Only	
Not for resale without prior written consent from LifeSpan BioSciences, Inc.	
Created on 9/24/2014	
© 2014 LifeSpan BioSciences	