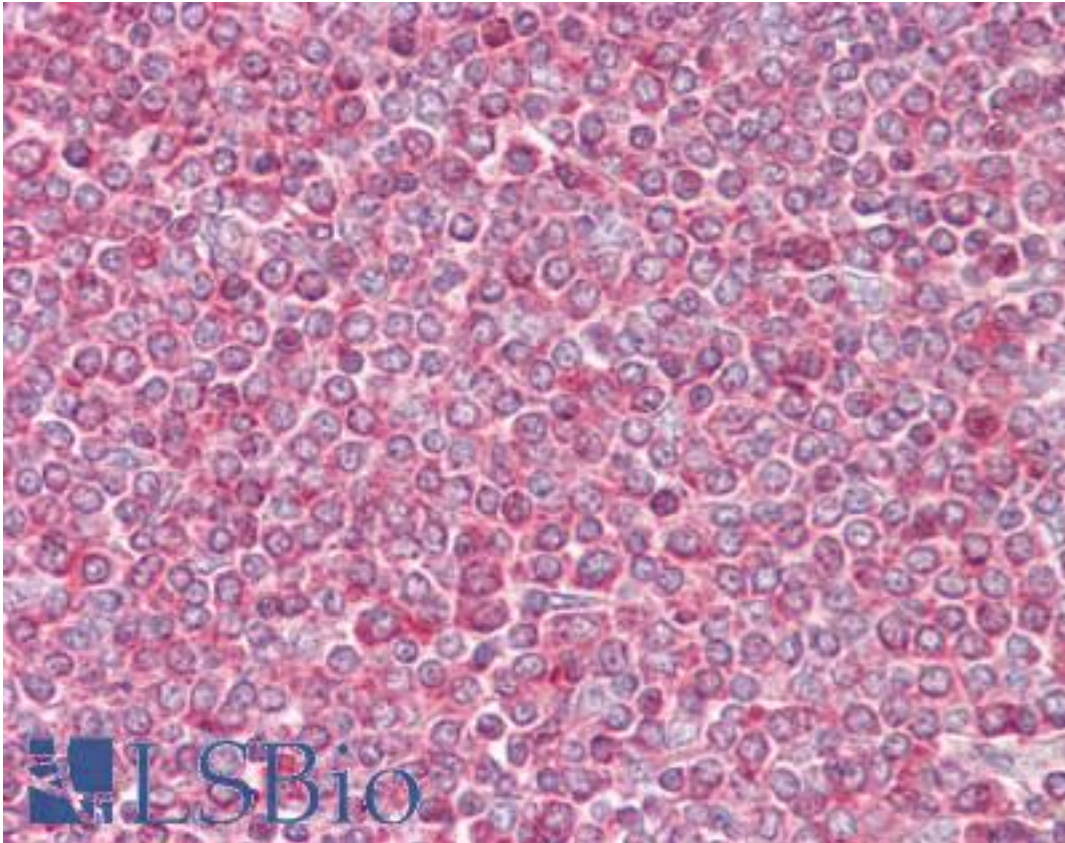


ACTB / Beta Actin Rabbit anti-Human Polyclonal (aa2-16) Antibody - LS-B6503 - LSBio

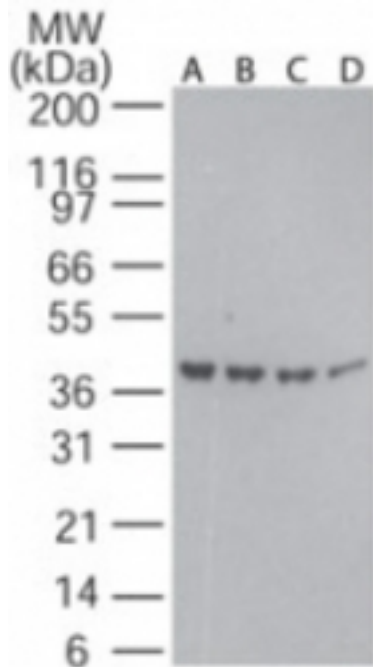
CatalogID:	LS-B6503
Validation:	This antibody replaces catalog number LS-C19378. It has been validated for use in the following assays: IHC-P.
Target:	actin, beta (ACTB)
Synonyms:	ACTB Antibody, Actin, cytoplasmic 1 Antibody, Beta-actin Antibody, Beta actin Antibody, BRWS1 Antibody, Actin, beta Antibody, Beta cytoskeletal actin Antibody, PS1TP5-binding protein 1 Antibody, PS1TP5BP1 Antibody
Host	ACTB antibody was produced in Rabbit
Clonality:	Polyclonal
Immunogen Species:	ACTB / Beta Actin antibody was raised against Human
Immunogen:	ACTB / Beta Actin antibody was raised against amino acids 2-15 (CDDIAALVIDNGSG) of human beta actin were used as the immunogen. Percent identity by BLAST analysis: Seq squirt, Sea anemone (100%); Human, Chimpanzee, Gorilla, Orangutan, Monkey, Marmoset, Mouse, Rat, Sheep, Hamster, Panda, Bat, Bovine, Dog, Horse, Rabbit, Pig, Opossum, Guinea pig, Chicken, Platypus, Xenopus, Medaka, Mosquito, Ant (93%).
Specificity:	Amino acids 2-16 (CDDIAALVIDNGSG) of actin protein were used as the immunogen.
Epitope:	aa2-16
Reactivity:	Human, Mouse, Rat
Predicted Reactivity:	Chimpanzee, Gorilla, Orangutan, Monkey, Bat, Bovine, Dog, Guinea pig, Hamster, Horse, Pig, Rabbit, Sheep, Chicken, Xenopus, Insect
Purification:	Protein G purified
Presentation:	PBS containing 0.05% BSA and 0.05% sodium azide
Recommended Storage:	Long term: -20°C; Short term: +4°C; Avoid freeze-thaw cycles.
Uses:	IHC - Paraffin (10 µg/ml), Western blot (0.25 - 1 µg/ml) (Optimal dilution to be determined by the researcher)
Size:	50 µg
Concentration:	0.5 mg/ml

Immunohistochemistry Image:



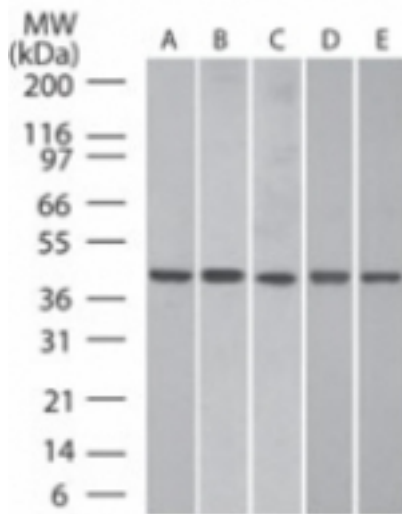
Anti-Beta Actin antibody IHC of human spleen. Immunohistochemistry of formalin-fixed, paraffin-embedded tissue after heat-induced antigen retrieval. Antibody LS-B6503 concentration 10 ug/ml.

Western Blot Image:



Western blot of beta actin in decreasing amounts of human ovary tissue lysate using antibody at 0.25 ug/ml: A) 40 ug, B) 30 ug, C) 20 ug, and D) 10 ug per lane.

Western Blot Image:



Western blot of beta actin in A: human brain (40141), B: mouse brain (40121), C: rat brain (40121), D: human lung (40146) and E: human spleen (40149) tissue lysates using antibody at 0.25 ug/ml.

Requested From:

Japan

Laboratory Reagent For In Vitro Research Use Only

Not for resale without prior written consent from LifeSpan BioSciences, Inc.

Created on 9/24/2014

© 2014 LifeSpan BioSciences