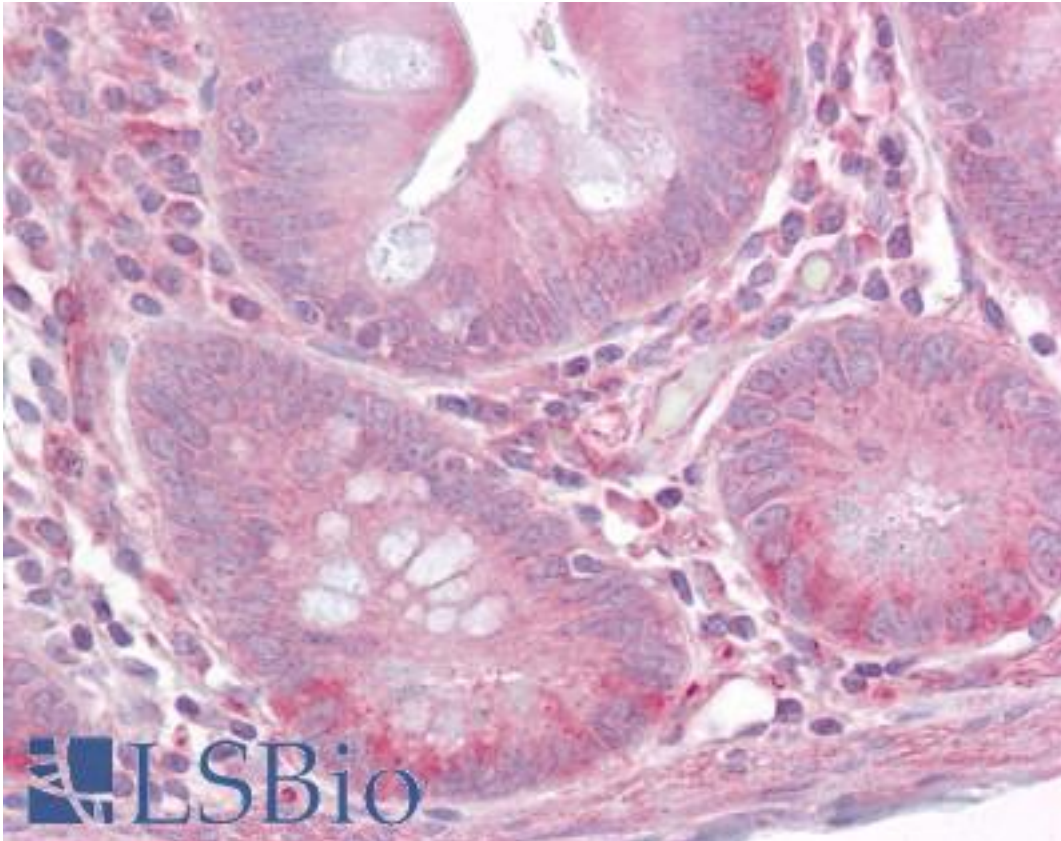


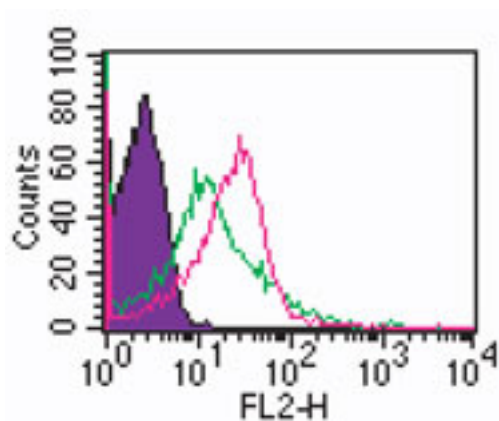
TLR1 Rabbit anti-Human Polyclonal (aa400-450) Antibody - LS-B6499 - LSBio	
CatalogID:	LS-B6499
Validation:	This antibody replaces catalog number LS-C715. It has been validated for use in the following assays: IHC-P.
Target:	toll-like receptor 1 (TLR1)
Synonyms:	TLR1 Antibody, CD281 antigen Antibody, KIAA0012 Antibody, Rsc786 Antibody, Toll-like receptor 1 Antibody, TIL. LPRS5 Antibody, TIL Antibody, CD281 Antibody
Family / Subfamily:	Toll-like Receptor / not assigned-Toll-like Receptor
Host	TLR1 antibody was produced in Rabbit
Clonality:	Polyclonal
Isotype:	IgG
Immunogen Species:	TLR1 antibody was raised against Human
Antigen Type:	Synthetic peptide
Immunogen:	TLR1 antibody was raised against synthetic peptide from human TLR1.
Specificity:	A KLH-conjugated synthetic peptide corresponding to a sequence within amino acids 400-450 of human TLR1.
Epitope:	aa400-450
Reactivity:	Human, Mouse, Rat
Purification:	Protein G purified
Presentation:	PBS containing 0.05% BSA and 0.05% sodium azide
Recommended Storage:	Long term: -20°C; Short term: +4°C; Avoid freeze-thaw cycles.
Uses:	IHC - Paraffin (10 µg/ml), Western blot (1 - 3 µg/ml), Flow Cytometry (Optimal dilution to be determined by the researcher)
Size:	50 µg
Concentration:	0.5 mg/ml

Immunohistochemistry Image:



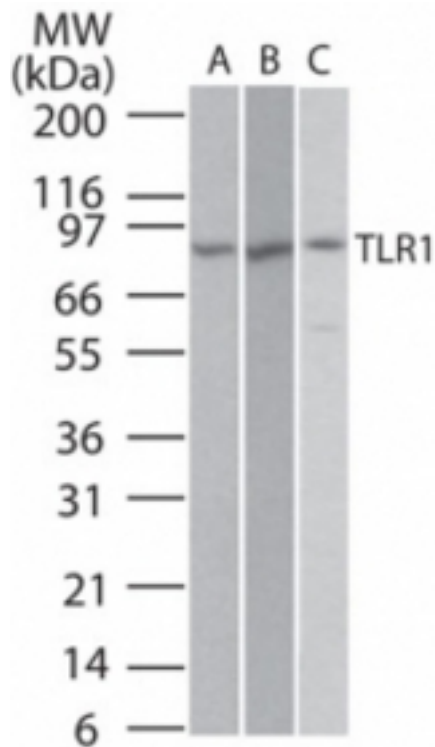
Anti-TLR1 antibody IHC of human small intestine. Immunohistochemistry of formalin-fixed, paraffin-embedded tissue after heat-induced antigen retrieval. Antibody LS-B6499 concentration 10 ug/ml.

Flow Cytometry Image:



Cell surface flow cytometry of TLR1 in human PBMCs (monocyte-gated) using TLR1 antibody at 0.5 ug/10⁶ cells. Shaded histogram represents cells without antibody, green represents isotype control, red represents TLR1 antibody. Goat anti-rabbit PE secondary antibody was used.

Western Blot Image:



Western blot of TLR1 in Ramos (A), Raw (B), and (C) HEK293 cells transfected with full length human TLR1 cell lysate using TLR1 antibody at 2 ug/ml. Goat anti-rabbit HRP secondary antibody was used.

Requested From:

Japan

Laboratory Reagent For In Vitro Research Use Only

Not for resale without prior written consent from LifeSpan BioSciences, Inc.

Created on 9/24/2014

© 2014 LifeSpan BioSciences