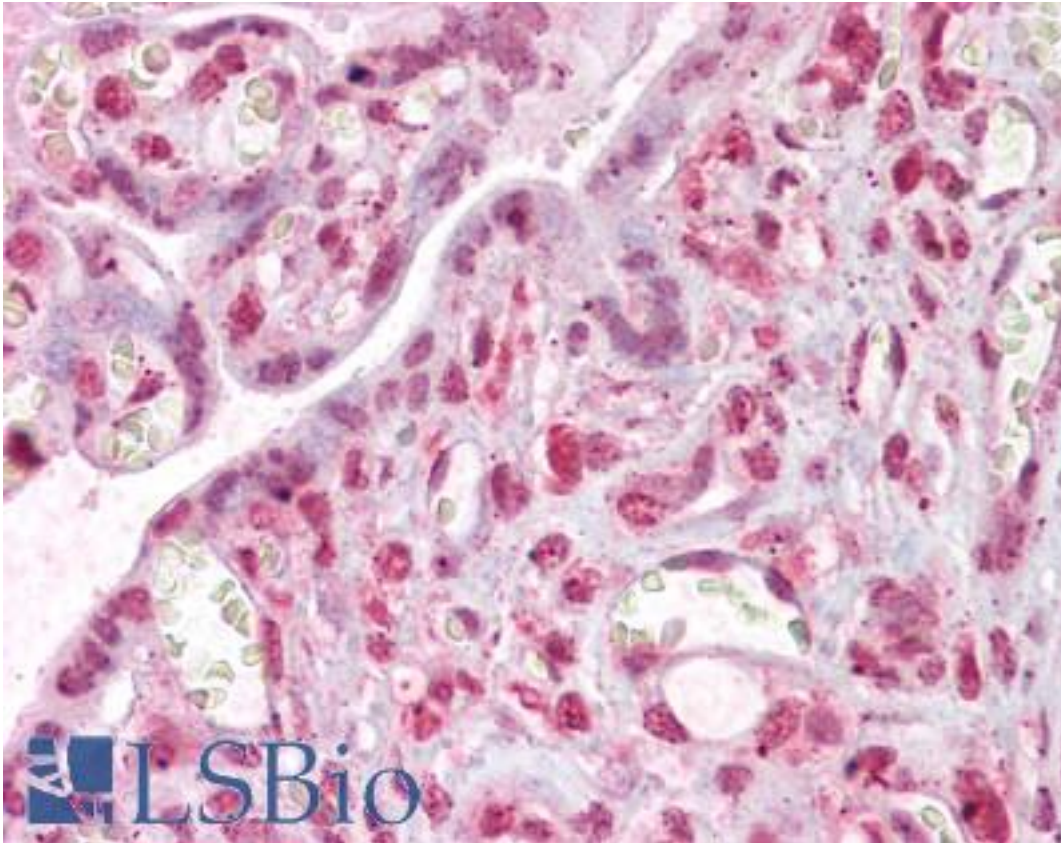


MLX / TCFL4 Goat anti-Human Polyclonal (Internal) Antibody - LS-B6494 - LSBio	
CatalogID:	LS-B6494
Validation:	This antibody replaces catalog number LS-C108941. It has been validated for use in the following assays: IHC-P.
Target:	MLX, MAX dimerization protein
Synonyms:	MLX Antibody, BHLHd13 Antibody, BigMax protein Antibody, MXD7 Antibody, MAD7 Antibody, Max-like bHLHZip protein Antibody, TCFL4 Antibody, MLX, MAX dimerization protein Antibody, Protein BigMax Antibody, Max-like protein X Antibody, Transcription factor-like 4 Antibody
Host	MLX antibody was produced in Goat
Clonality:	Polyclonal
Immunogen Species:	MLX / TCFL4 antibody was raised against Human
Antigen Type:	Synthetic peptide
Immunogen:	MLX / TCFL4 antibody was raised against synthetic peptide C-QIVKAHQDNPHEGED from an internal region of human MLX (NP_937848.1; NP_937847.1; NP_733752.1). Percent identity by BLAST analysis: Human, Gorilla, Orangutan, Gibbon, Monkey, Marmoset, Mouse, Rat, Hamster, Elephant, Panda, Dog, Bat, Bovine, Horse, Pig, Opossum (100%); Goat (93%); Rabbit, Turkey, Chicken, Platypus (87%); Lizard, Xenopus (80%).
Specificity:	Human MLX. This antibody is expected to recognize all three reported isoforms (NP_937848.1; NP_937847.1; NP_733752.1).
Epitope:	Internal
Reactivity:	Human, Gorilla, Orangutan, Gibbon, Monkey, Mouse, Rat, Bat, Bovine, Dog, Hamster, Horse, Pig
Predicted Reactivity:	Goat
Purification:	Immunoaffinity purified
Presentation:	Tris-buffered saline, pH 7.3, 0.5% BSA, 0.02% sodium azide
Recommended Storage:	Store at -20°C. Minimize freezing and thawing.
Usage Summary:	Western Blot: Preliminary experiments in Human, Mouse and Rat Liver lysates gave no specific signal but low background (at antibody concentration up to 1 ug/ml).
Uses:	IHC - Paraffin (2.5 - 3.75 µg/ml), ELISA (Optimal dilution to be determined by the researcher)
Size:	50 µg
Concentration:	0.5 mg/ml

Immunohistochemistry Image:



Anti-MLX antibody IHC of human placenta. Immunohistochemistry of formalin-fixed, paraffin-embedded tissue after heat-induced antigen retrieval. Antibody LS-B6494 concentration 2.5 ug/ml.

Requested From:

Japan

Laboratory Reagent For In Vitro Research Use Only

Not for resale without prior written consent from LifeSpan BioSciences, Inc.

Created on 9/24/2014

© 2014 LifeSpan BioSciences