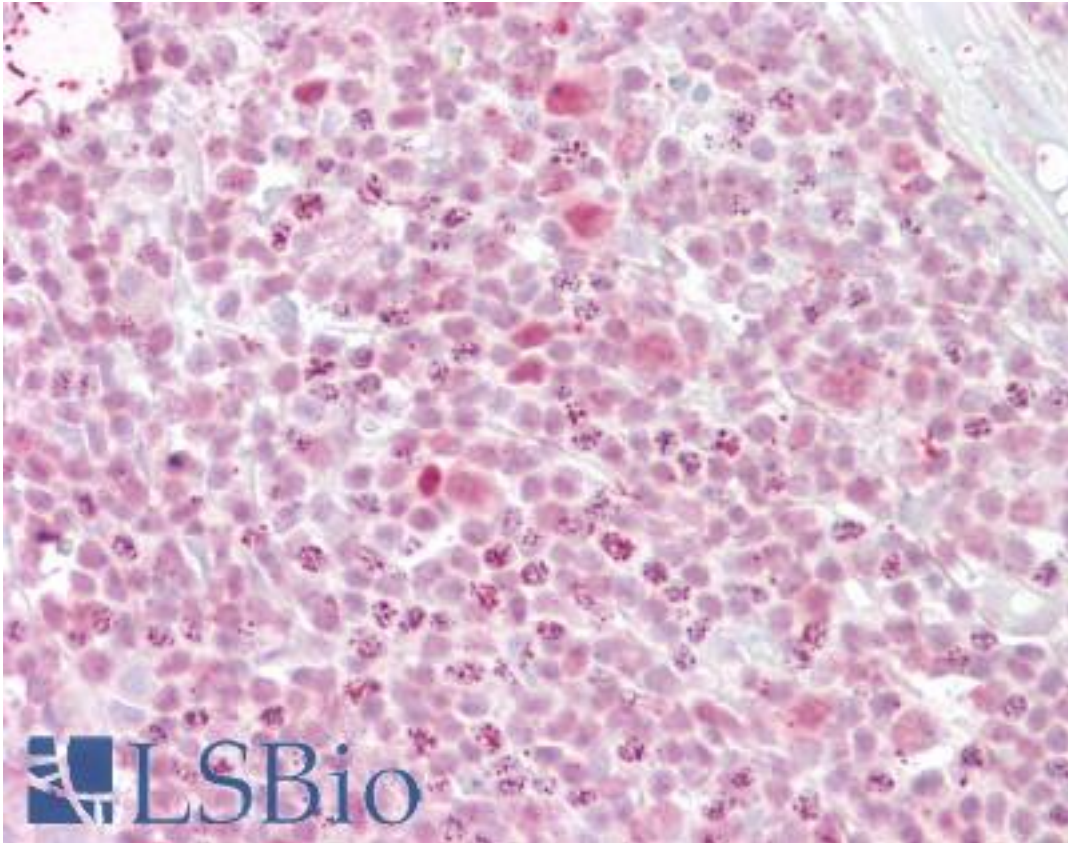


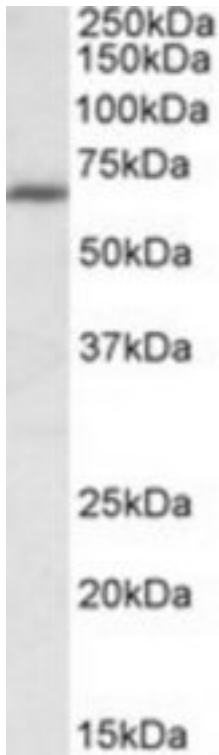
IKZF1 / IKAROS Goat anti-Human Polyclonal (Internal) Antibody - LS-B6493 - LSBio	
<b>CatalogID:</b>	LS-B6493
<b>Validation:</b>	This antibody replaces catalog number LS-C112898. It has been validated for use in the following assays: IHC-P.
<b>Target:</b>	IKAROS family zinc finger 1 (Ikaros) (IKZF1)
<b>Synonyms:</b>	IKZF1 Antibody, CLL-associated antigen KW-6 Antibody, Hlk-1 Antibody, Hs.54452 Antibody, IK1 Antibody, IKAROS Antibody, Ikaros/lyf-1 homolog Antibody, LyF-1 Antibody, PRO0758 Antibody, DNA-binding protein Ikaros Antibody, Ikaros (zinc finger protein) Antibody, LYF1 Antibody, ZNFN1A1 Antibody
<b>Host</b>	IKZF1 antibody was produced in Goat
<b>Clonality:</b>	Polyclonal
<b>Immunogen Species:</b>	IKZF1 / IKAROS antibody was raised against Human
<b>Antigen Type:</b>	Synthetic peptide
<b>Immunogen:</b>	IKZF1 / IKAROS antibody was raised against synthetic peptide C-DTPYDSSASYEKEN from an internal region of human IKZF1 (NP_006051.1). Percent identity by BLAST analysis: Human, Gibbon, Monkey (100%); Marmoset, Panda, Dog, Horse, Pig (93%); Elephant, Rabbit (86%).
<b>Specificity:</b>	Human IKZF1.
<b>Epitope:</b>	Internal
<b>Reactivity:</b>	Human, Gibbon
<b>Predicted Reactivity:</b>	Monkey, Dog, Horse, Pig
<b>Purification:</b>	Immunoaffinity purified
<b>Presentation:</b>	Tris-buffered saline, pH 7.3, 0.5% BSA, 0.02% sodium azide
<b>Recommended Storage:</b>	Store at -20°C. Minimize freezing and thawing.
<b>Uses:</b>	IHC - Paraffin (2.5 - 3.75 µg/ml), Western blot (1 - 3 µg/ml), ELISA (1:1000) (Optimal dilution to be determined by the researcher)
<b>Size:</b>	50 µg
<b>Concentration:</b>	0.5 mg/ml

**Immunohistochemistry Image:**



Anti-IKZF1 antibody IHC of human tonsil. Immunohistochemistry of formalin-fixed, paraffin-embedded tissue after heat-induced antigen retrieval. Antibody LS-B6493 concentration 2.5 ug/ml.

**Western Blot Image:**



IKZF1 antibody (1 ug/ml) staining of MOLT4 lysate (35 ug protein/ml in RIPA buffer). Primary incubation was 1 hour. Detected by chemiluminescence.

**Requested From:**

Japan

Laboratory Reagent For In Vitro Research Use Only

Not for resale without prior written consent from LifeSpan BioSciences, Inc.

Created on 9/24/2014

© 2014 LifeSpan BioSciences