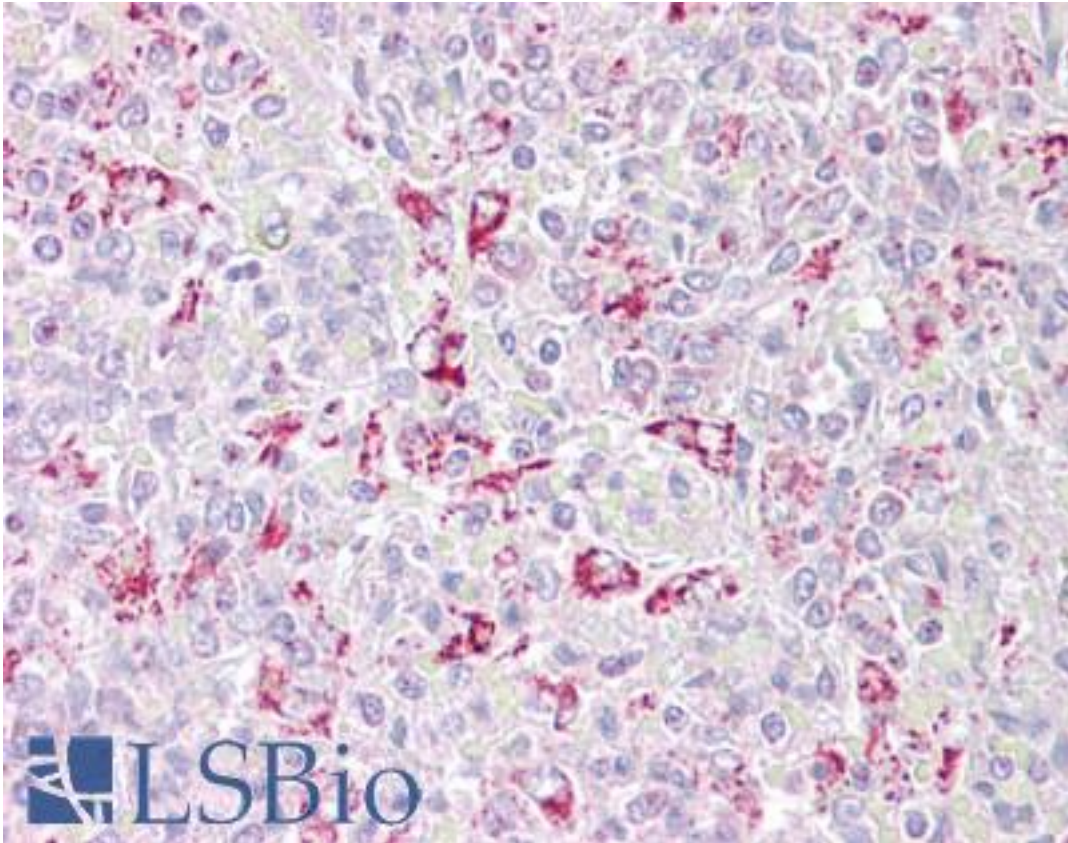


PFKFB2 Goat anti-Human Polyclonal (N-Terminus) Antibody - LS-B6492 - LSBio

CatalogID:	LS-B6492
Validation:	This antibody replaces catalog number LS-C112876. It has been validated for use in the following assays: IHC-P.
Target:	6-phosphofructo-2-kinase/fructose-2,6-biphosphatase 2 (PFKFB2)
Synonyms:	PFKFB2 Antibody, 6PF-2-K/Fru-2,6-P2ase 2 Antibody, PFK-2/FBPase-2 Antibody, PFK/FBPase 2 Antibody, PFKFB, cardiac Antibody
Host	PFKFB2 antibody was produced in Goat
Clonality:	Polyclonal
Immunogen Species:	PFKFB2 antibody was raised against Human
Antigen Type:	Synthetic peptide
Immunogen:	PFKFB2 antibody was raised against synthetic peptide SEQNNNSYETKTP-C from the N-terminus of human PFKFB2 (NP_006203.2; NP_001018063.1). Percent identity by BLAST analysis: Human, Gorilla, Gibbon, Monkey (100%); Orangutan, Dog, Pig (92%); Bovine (85%).
Specificity:	Human PFKFB2. This antibody is expected to recognize both reported isoforms (NP_006203.2; NP_001018063.1).
Epitope:	N-Terminus
Reactivity:	Human, Gorilla, Gibbon, Monkey
Predicted Reactivity:	Orangutan, Dog, Pig
Purification:	Immunoaffinity purified
Presentation:	Tris-buffered saline, pH 7.3, 0.5% BSA, 0.02% sodium azide
Recommended Storage:	Store at -20°C. Minimize freezing and thawing.
Usage Summary:	Peptide ELISA: antibody detection limit dilution 1:16000. Western blot: Preliminary experiments gave an approx 75Da band in Human Heart lysates after 1 ug/ml antibody staining. Please note that currently we cannot find an explanation in the literature for the band we observe given the calculated size of 58.5kDa according to NP_006203.2 and 54.4kDa according to NP_001018063.1. The 75kDa band was successfully blocked by incubation with the immunizing peptide.
Uses:	IHC - Paraffin (2.5 - 3.75 µg/ml), ELISA (1:16000) (Optimal dilution to be determined by the researcher)
Size:	50 µg
Concentration:	0.5 mg/ml

Immunohistochemistry Image:



Anti-PFKFB2 antibody IHC of human spleen. Immunohistochemistry of formalin-fixed, paraffin-embedded tissue after heat-induced antigen retrieval. Antibody LS-B6492 concentration 2.5 ug/ml.

Requested From:

Japan

Laboratory Reagent For In Vitro Research Use Only

Not for resale without prior written consent from LifeSpan BioSciences, Inc.

Created on 9/24/2014

© 2014 LifeSpan BioSciences