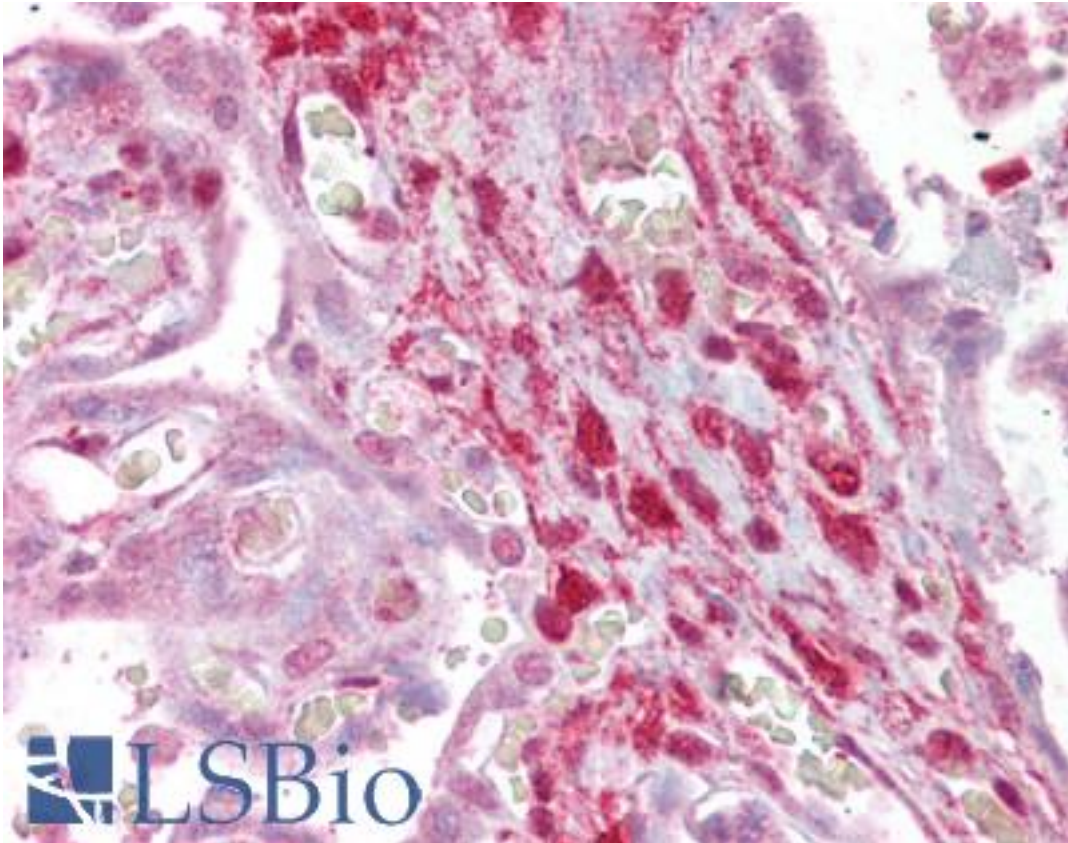


CNN2 Goat anti-Human Polyclonal Antibody - LS-B6491 - LSBio

CatalogID:	LS-B6491
Validation:	This antibody replaces catalog number LS-C102867. It has been validated for use in the following assays: IHC-P.
Target:	calponin 2 (CNN2)
Synonyms:	CNN2 Antibody, Calponin 2 Antibody, Calponin-2 Antibody, Calponin H2, smooth muscle Antibody, Neutral calponin Antibody
Host	CNN2 antibody was produced in Goat
Clonality:	Polyclonal
Immunogen Species:	CNN2 antibody was raised against Human
Antigen Type:	Synthetic peptide
Immunogen:	CNN2 antibody was raised against synthetic peptide C-DPGEVPEYPPYYQEE from an internal region (near C-terminus) of human CNN2 (NP_004359.1; NP_958434.1). Percent identity by BLAST analysis: Human, Gorilla, Orangutan, Monkey (100%); Gibbon (93%); Panda, Bat (80%).
Specificity:	Human CNN2. This antibody is expected to recognize both reported isoforms (NP_004359.1; NP_958434.1), but it is not expected to cross-react with CCN3.
Reactivity:	Human, Gorilla, Orangutan, Monkey
Predicted Reactivity:	Gibbon
Purification:	Immunoaffinity purified
Presentation:	Tris-buffered saline, pH 7.3, 0.5% BSA, 0.02% sodium azide
Recommended Storage:	Store at -20°C. Minimize freezing and thawing.
Usage Summary:	Peptide ELISA: antibody detection limit dilution 1:32000. Western blot: Approx 35 kDa band observed in lysates of cell line HepG2 (calculated MW of 33.7 kDa according to NP_004359.1). Recommended concentration: 0.03-0.1 ug/ml.
Uses:	IHC - Paraffin (2.5 - 3.75 µg/ml), Western blot (0.03 - 0.1 µg/ml), ELISA (1:32000) (Optimal dilution to be determined by the researcher)
Size:	50 µg
Concentration:	0.5 mg/ml

Immunohistochemistry Image:



Anti-CNN2 antibody IHC of human placenta. Immunohistochemistry of formalin-fixed, paraffin-embedded tissue after heat-induced antigen retrieval. Antibody LS-B6491 concentration 2.5 ug/ml.

Western Blot Image:



CNN2 antibody (0.03 ug/ml) staining of HepG2 lysates (35 ug protein/ml in RIPA buffer) with (B) and without (A) blocking with the immunizing peptide. Primary incubation was 1 hour. Detected by chemiluminescence.

Requested From:

Japan

Laboratory Reagent For In Vitro Research Use Only

Not for resale without prior written consent from LifeSpan BioSciences, Inc.

Created on 9/24/2014

© 2014 LifeSpan BioSciences