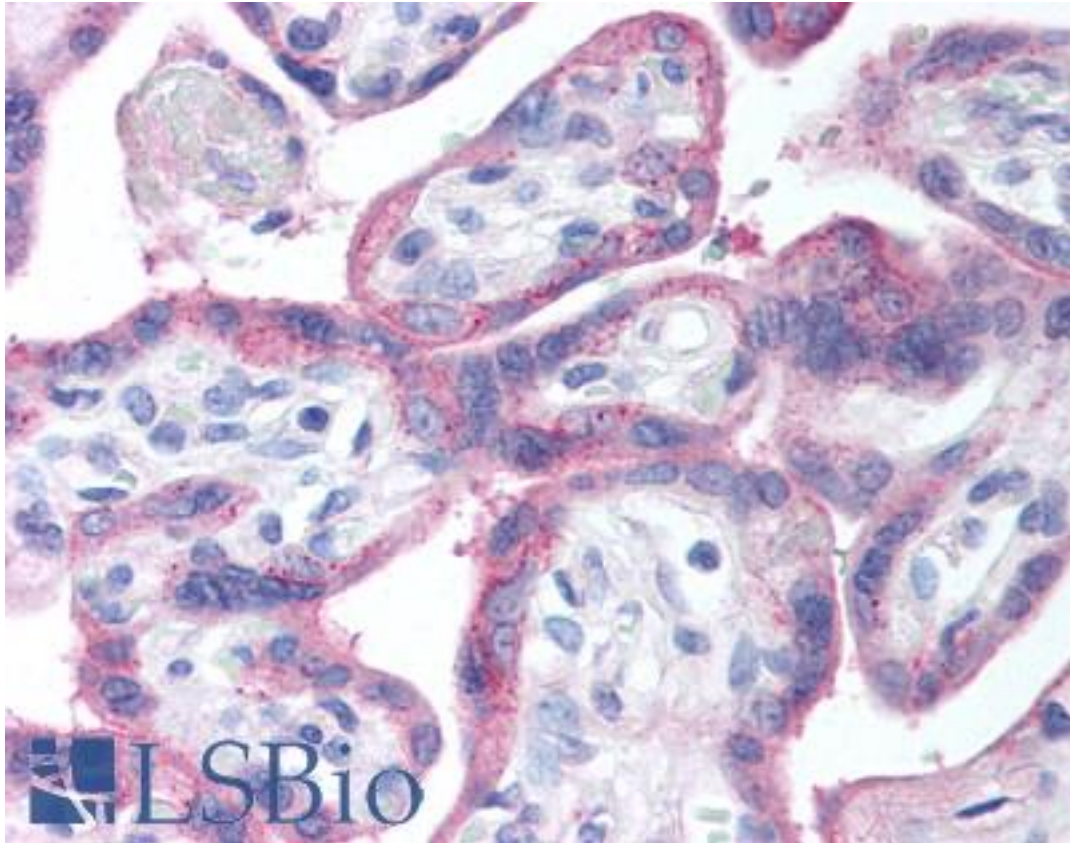


EGFR Rabbit anti-Human Polyclonal (aa1189-1199) Antibody - LS-B649 - LSBio

CatalogID:	LS-B649
Validation:	This antibody replaces catalog number LS-C18795. It has been validated for use in the following assays: IHC.
Target:	epidermal growth factor receptor (EGFR)
Synonyms:	EGFR Antibody, EGf receptor Antibody, ERBB Antibody, ERBB1 Antibody, MENA Antibody, Panitumumab Antibody, PIG61 Antibody, Proto-oncogene c-ErbB -1 Antibody, V-erb-b homolog Antibody, EGF-R Antibody, HER1 Antibody
Family / Subfamily:	Protein Kinase / EGF Receptor
Host	EGFR antibody was produced in Rabbit
Clonality:	Polyclonal
Immunogen Species:	EGFR antibody was raised against Human
Antigen Type:	Synthetic peptide
Immunogen:	EGFR antibody was raised against synthetic peptide from human EGFR.
Specificity:	Amino acids 1189-1199 of human EGFR protein.
Epitope:	aa1189-1199
Reactivity:	Human, Mouse, Rat
Purification:	Purified
Presentation:	0.02 M potassium phosphate, 0.15 M sodium chloride, pH 7.2, 0.01% sodium azide.
Recommended Storage:	+4°C or -20°C, Avoid repeated freezing and thawing.
Usage Summary:	Immunohistochemistry: LS-B649 was validated for use in immunohistochemistry on a panel of 21 formalin-fixed, paraffin-embedded (FFPE) human tissues after heat induced antigen retrieval in pH 6.0 citrate buffer. After incubation with the primary antibody, slides were incubated with biotinylated secondary antibody, followed by alkaline phosphatase-streptavidin and chromogen. The stained slides were evaluated by a pathologist to confirm staining specificity. The optimal working concentration for LS-B649 was determined to be 5 ug/ml.
Uses:	IHC - Paraffin (5 µg/ml), Western blot (1:500 - 1:5000), ELISA (1:8000 - 1:32000) (Optimal dilution to be determined by the researcher)
Size:	50 µg
Concentration:	1 mg/ml

Immunohistochemistry Image:



Anti-EGFR antibody IHC of human placenta. Immunohistochemistry of formalin-fixed, paraffin-embedded tissue after heat-induced antigen retrieval. Antibody LS-B649 concentration 5 ug/ml.

Western Blot Image:



Anti-EGFR Antibody - Western Blot. Western blot of Affinity Purified anti-EGFR antibody shows detection of a band at ~170 kD (lane 1) corresponding to human EGFR present in unstimulated (lane 1) and EGF (50 ng/ml for 15 min) stimulated (lane 2) A431 whole cell lysates (arrowhead). Approximately 30 ug of lysate was separated on a 4-20% Tris-Glycine gel by SDS-PAGE and transferred onto nitrocellulose. After blocking the membrane was probed with the primary antibody diluted to 1:1000. Reaction occurred overnight at 4C followed by washes and reaction with a 1:10000 dilution of IRDye800 conjugated Gt-a-Rabbit IgG [H&L] MX (for 45 min at room temperature (800 nm channel, green). Molecular weight estimation was made by comparison to prestained MW markers in lane M (700 nm channel, red). IRDye800 fluorescence image was captured using the Odyssey Infrared Imaging System developed by LI-COR. IRDye is a trademark of LI-COR, Inc. Other detection systems will yield similar results.

Requested From:

Japan

Laboratory Reagent For In Vitro Research Use Only

Not for resale without prior written consent from LifeSpan BioSciences, Inc.

Created on 9/24/2014

© 2014 LifeSpan BioSciences