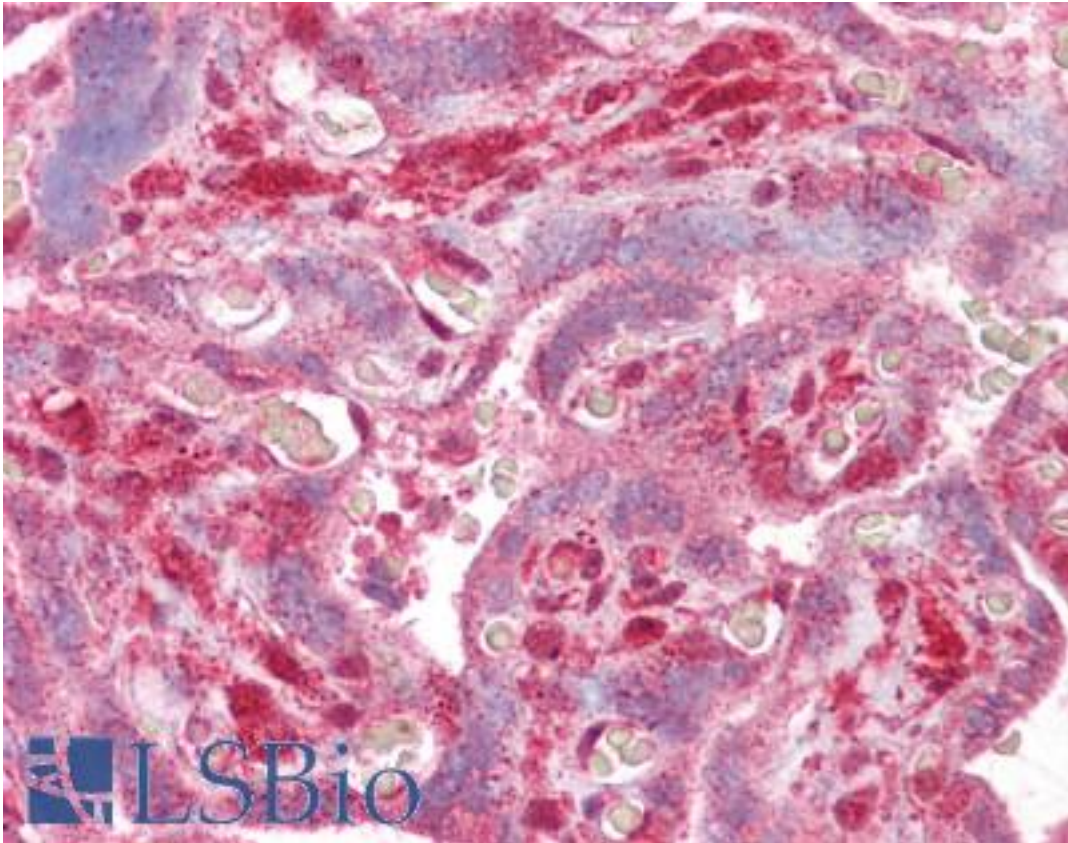


DLX5 Goat anti-Human Polyclonal (Internal) Antibody - LS-B6489 - LSBio	
<b>CatalogID:</b>	LS-B6489
<b>Validation:</b>	This antibody replaces catalog number LS-C112830. It has been validated for use in the following assays: IHC-P.
<b>Target:</b>	distal-less homeobox 5 (DLX5)
<b>Synonyms:</b>	DLX5 Antibody, Distal-less homeobox 5 Antibody, Homeobox protein DLX-5 Antibody, Distal-less homeo box 5 Antibody, SHFM1D Antibody
<b>Host</b>	DLX5 antibody was produced in Goat
<b>Clonality:</b>	Polyclonal
<b>Immunogen Species:</b>	DLX5 antibody was raised against Human
<b>Antigen Type:</b>	Synthetic peptide
<b>Immunogen:</b>	DLX5 antibody was raised against synthetic peptide C-AYNRVPSATNQPEK from an internal region of human DLX5 (NP_005212.1). Percent identity by BLAST analysis: Human, Gorilla, Gibbon, Marmoset (100%); Monkey, Mouse, Rat, Panda, Bovine, Horse, Pig (93%); Hamster, Elephant, Dog, Bat (86%).
<b>Specificity:</b>	Human DLX5.
<b>Epitope:</b>	Internal
<b>Reactivity:</b>	Human, Gorilla, Gibbon
<b>Predicted Reactivity:</b>	Monkey, Mouse, Rat, Bovine, Horse, Pig
<b>Purification:</b>	Immunoaffinity purified
<b>Presentation:</b>	Tris-buffered saline, pH 7.3, 0.5% BSA, 0.02% sodium azide
<b>Recommended Storage:</b>	Store at -20°C. Minimize freezing and thawing.
<b>Usage Summary:</b>	Peptide ELISA: antibody detection limit dilution 1:32000. Western blot: Approx 30kDa band observed in Human Bone Marrow lysates (calculated MW of 31.5kDa according to NP_005212.1). The observed molecular weight corresponds to earlier findings in literature with different antibodies (Lee et al, J Biol Chem. 2003 Sep 5;278(36):34387-94; PMID: 12815054). Recommended concentration: 1-3 ug/ml.
<b>Uses:</b>	IHC - Paraffin (2.5 - 3.75 µg/ml), Western blot (1 - 3 µg/ml), ELISA (1:32000) (Optimal dilution to be determined by the researcher)
<b>Size:</b>	50 µg
<b>Concentration:</b>	0.5 mg/ml

**Immunohistochemistry Image:**



Anti-DLX5 antibody IHC of human placenta. Immunohistochemistry of formalin-fixed, paraffin-embedded tissue after heat-induced antigen retrieval. Antibody LS-B6489 concentration 2.5 ug/ml.

**Western Blot Image:**



DLX5 antibody (1 ug/ml) staining of Human Bone Marrow lysate (35 ug protein/ml in RIPA buffer). Primary incubation was 1 hour. Detected by chemiluminescence.

**Requested From:**

Japan

Laboratory Reagent For In Vitro Research Use Only

Not for resale without prior written consent from LifeSpan BioSciences, Inc.

Created on 9/24/2014

© 2014 LifeSpan BioSciences