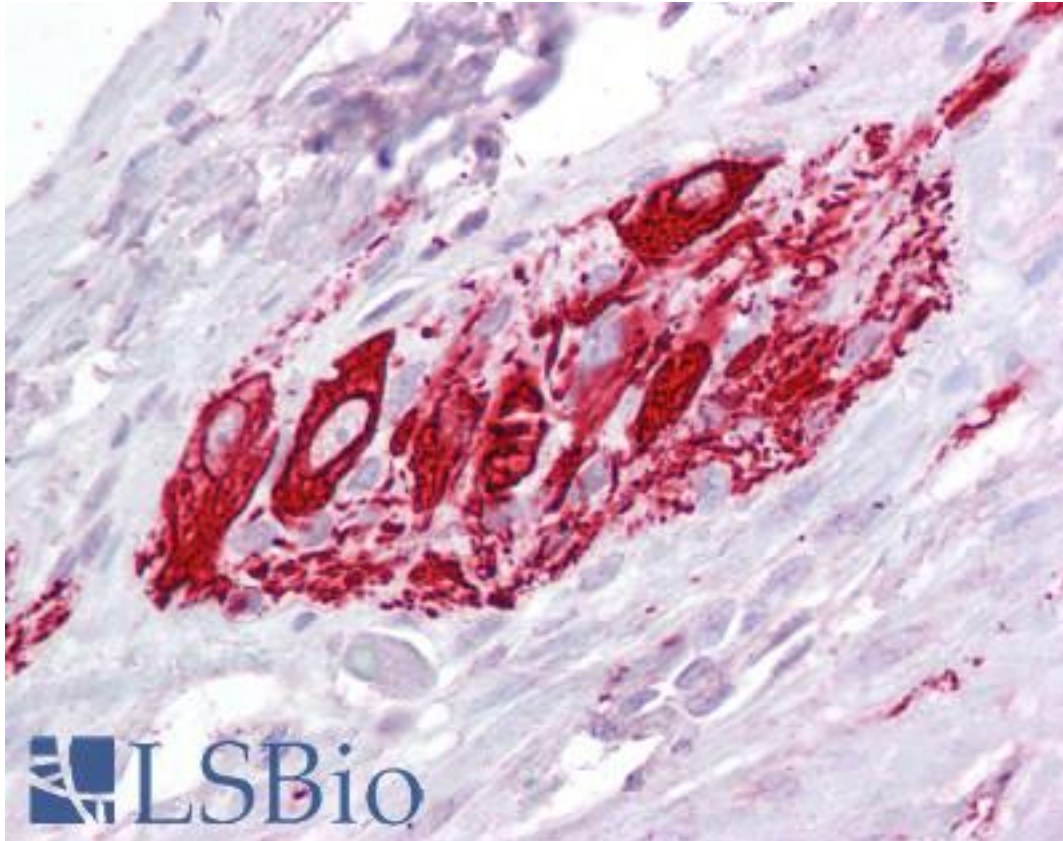


ABRI / ITM2B Goat anti-Human Polyclonal (Internal) Antibody - LS-B6486 - LSBio

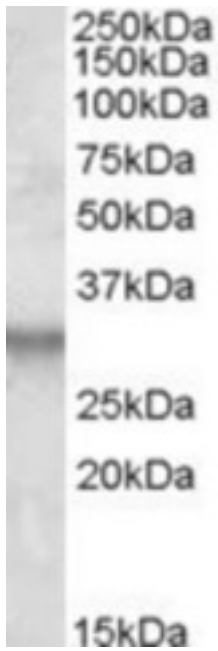
CatalogID:	LS-B6486
Validation:	This antibody replaces catalog number LS-C112793. It has been validated for use in the following assays: IHC-P.
Target:	integral membrane protein 2B (ITM2B)
Synonyms:	ITM2B Antibody, ABri/ADan amyloid peptide Antibody, ABRI Antibody, BRI Antibody, BRI2 Antibody, E3-16 Antibody, Integral membrane protein 2B Antibody, ImBRI2 Antibody, FBD Antibody, Protein E25B Antibody, BRICD2B Antibody, BRICHOS domain containing 2B Antibody, Transmembrane protein BRI Antibody, E25B Antibody, Immature BRI2 Antibody
Host	ITM2B antibody was produced in Goat
Clonality:	Polyclonal
Immunogen Species:	ABRI / ITM2B antibody was raised against Human
Antigen Type:	Synthetic peptide
Immunogen:	ABRI / ITM2B antibody was raised against synthetic peptide C-HDKETYKLQRRETIK from an internal region of human ITM2B (NP_068839.1). Percent identity by BLAST analysis: Human, Chimpanzee, Gorilla, Orangutan, Gibbon, Monkey, Bovine, Horse (100%); Mouse, Rat, Elephant, Panda, Dog, Bat, Rabbit, Opossum (93%); Marmoset, Hamster, Pig (87%); Lizard, Xenopus (80%).
Specificity:	Human ITM2B.
Epitope:	Internal
Reactivity:	Human, Chimpanzee, Gorilla, Orangutan, Gibbon, Monkey, Bovine, Horse
Predicted Reactivity:	Mouse, Rat, Bat, Dog, Rabbit
Purification:	Immunoaffinity purified
Presentation:	Tris-buffered saline, pH 7.3, 0.5% BSA, 0.02% sodium azide
Recommended Storage:	Store at -20°C. Minimize freezing and thawing.
Usage Summary:	Peptide ELISA: antibody detection limit dilution 1:8000. Western blot: Approx. 33kDa band observed in Human Brain (Cerebellum and Hippocampus) lysates (calculated MW of 30.3kDa according to NP_068839.1). Recommended concentration: 1-3 ug/ml.
Uses:	IHC - Paraffin (2.5 - 3.75 µg/ml), Western blot (1 - 3 µg/ml), ELISA (1:8000) (Optimal dilution to be determined by the researcher)
Size:	50 µg
Concentration:	0.5 mg/ml

Immunohistochemistry Image:



Anti-ITM2B antibody IHC of human small intestine, myenteric plexus. Immunohistochemistry of formalin-fixed, paraffin-embedded tissue after heat-induced antigen retrieval. Antibody LS-B6486 concentration 2.5 ug/ml.

Western Blot Image:



ITM2B antibody (1 ug/ml) staining of Human Hippocampus lysate (35 ug protein/ml in RIPA buffer). Primary incubation was 1 hour. Detected by chemiluminescence.

Requested From:

Japan

Laboratory Reagent For In Vitro Research Use Only

Not for resale without prior written consent from LifeSpan BioSciences, Inc.

Created on 9/24/2014

© 2014 LifeSpan BioSciences