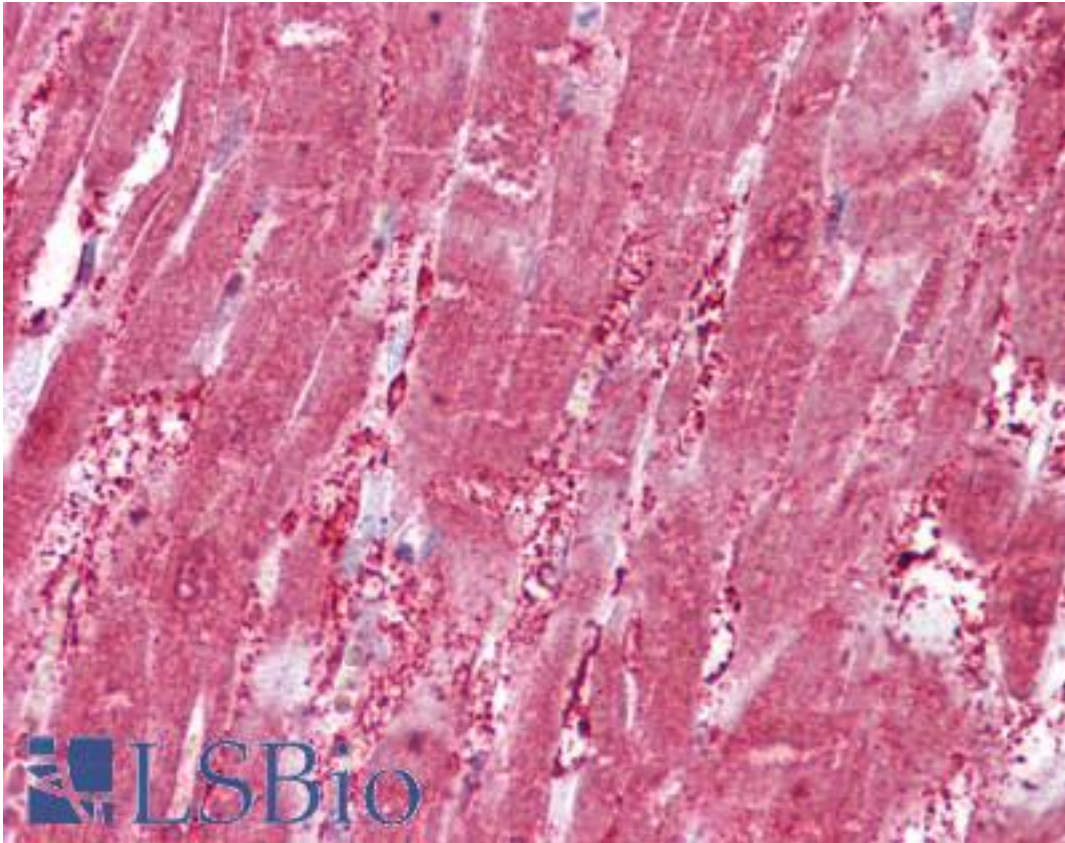


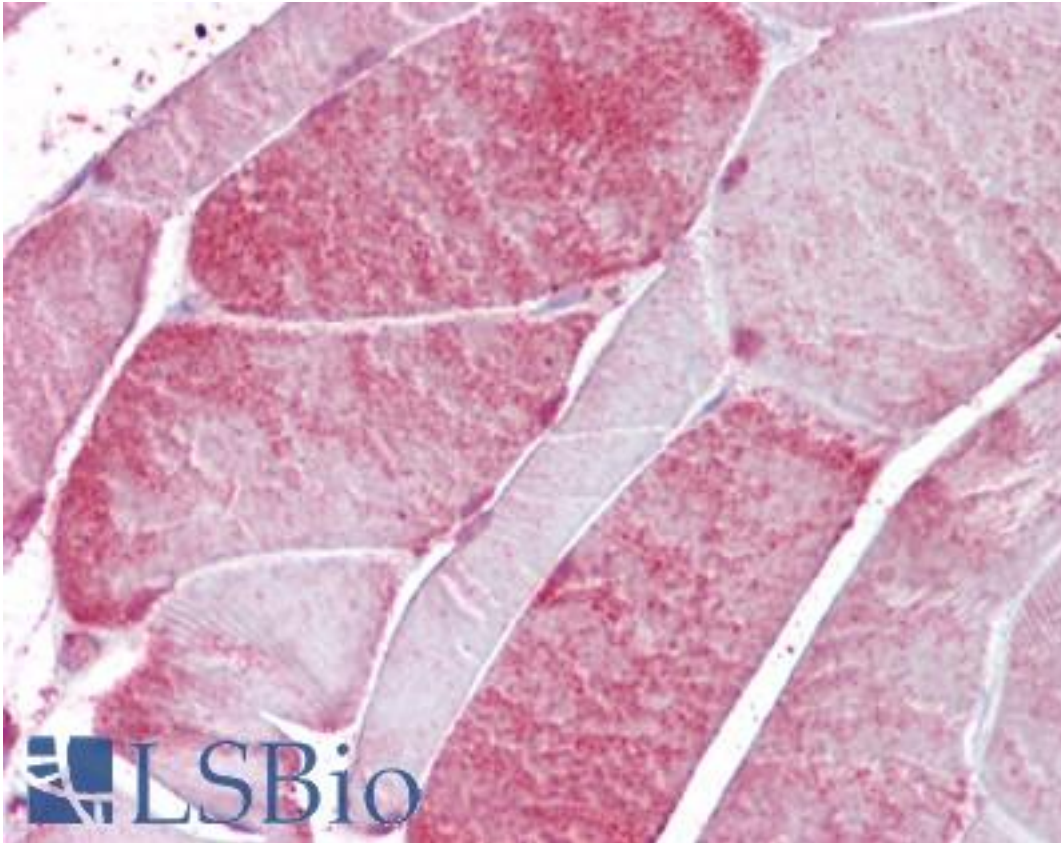
CSR3 / MLP Goat anti-Human Polyclonal (Internal) Antibody - LS-B6484 - LSBio	
<b>CatalogID:</b>	LS-B6484
<b>Validation:</b>	This antibody replaces catalog number LS-C87391. It has been validated for use in the following assays: IHC-P.
<b>Target:</b>	cysteine and glycine-rich protein 3 (cardiac LIM protein) (CSR3)
<b>Synonyms:</b>	CSR3 Antibody, Cardiac LIM domain protein Antibody, Cardiac LIM protein Antibody, CLP Antibody, CMH12 Antibody, Cysteine-rich protein 3 Antibody, CMD1M Antibody, CRP3 Antibody, Muscle LIM protein Antibody, LIM domain only 4 Antibody, LIM domain protein, cardiac Antibody, MLP Antibody
<b>Host</b>	CSR3 antibody was produced in Goat
<b>Clonality:</b>	Polyclonal
<b>Immunogen Species:</b>	CSR3 / MLP antibody was raised against Human
<b>Antigen Type:</b>	Synthetic peptide
<b>Immunogen:</b>	CSR3 / MLP antibody was raised against synthetic peptide CGKSLESTNVTDKD from an internal region of human CSR3 (NP_003467.1). Percent identity by BLAST analysis: Human, Gorilla, Gibbon, Monkey, Marmoset, Mouse, Rat, Hamster, Elephant, Panda, Dog, Bat, Bovine, Horse, Rabbit, Pig, Opossum, Chicken, Platypus, Lizard (100%); Salmon, Stickleback, Pufferfish, Zebrafish (93%).
<b>Specificity:</b>	Human CSR3.
<b>Epitope:</b>	Internal
<b>Reactivity:</b>	Human, Gorilla, Gibbon, Monkey, Mouse, Rat, Bat, Bovine, Dog, Hamster, Horse, Pig, Rabbit, Chicken
<b>Predicted Reactivity:</b>	Zebrafish
<b>Purification:</b>	Immunoaffinity purified
<b>Presentation:</b>	Tris-buffered saline, pH 7.3, 0.5% BSA, 0.02% sodium azide
<b>Recommended Storage:</b>	Store at -20°C. Minimize freezing and thawing.
<b>Usage Summary:</b>	Peptide ELISA: antibody detection limit dilution 1:32000. Western Blot: Approx. 20kD band observed in Human, Mouse and Rat Heart lysates (calculated MW of 21.0kD according to Human NP_003467.1 and 20.8kD according to Rat NP_476485.1). Recommended concentration: 0.01-0.03 ug/ml.
<b>Uses:</b>	IHC - Paraffin (2.5 - 3.75 µg/ml), Western blot (0.01 - 0.03 µg/ml), ELISA (1:32000) & (0.01 - 0.03 µg/ml) (Optimal dilution to be determined by the researcher)
<b>Size:</b>	50 µg
<b>Concentration:</b>	0.5 mg/ml

**Immunohistochemistry Image:**



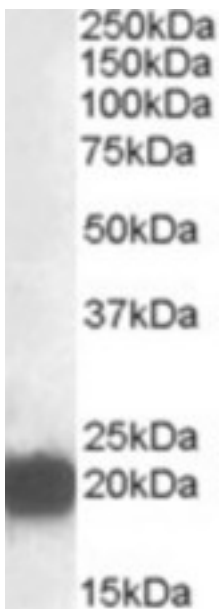
Anti-CSRP3 antibody IHC of human heart. Immunohistochemistry of formalin-fixed, paraffin-embedded tissue after heat-induced antigen retrieval. Antibody LS-B6484 concentration 2.5 ug/ml.

**Immunohistochemistry Image:**



Anti-CSRP3 antibody IHC of human skeletal muscle. Immunohistochemistry of formalin-fixed, paraffin-embedded tissue after heat-induced antigen retrieval. Antibody LS-B6484 concentration 2.5 ug/ml.

**Western Blot Image:**



Antibody (0.01 ug/ml) staining of Rat Heart lysate (35 ug protein in RIPA buffer). Primary incubation was 1 hour. Detected by chemiluminescence.

<b>Requested From:</b>	Japan
Laboratory Reagent For In Vitro Research Use Only	
Not for resale without prior written consent from LifeSpan BioSciences, Inc.	
Created on 9/24/2014	
© 2014 LifeSpan BioSciences	