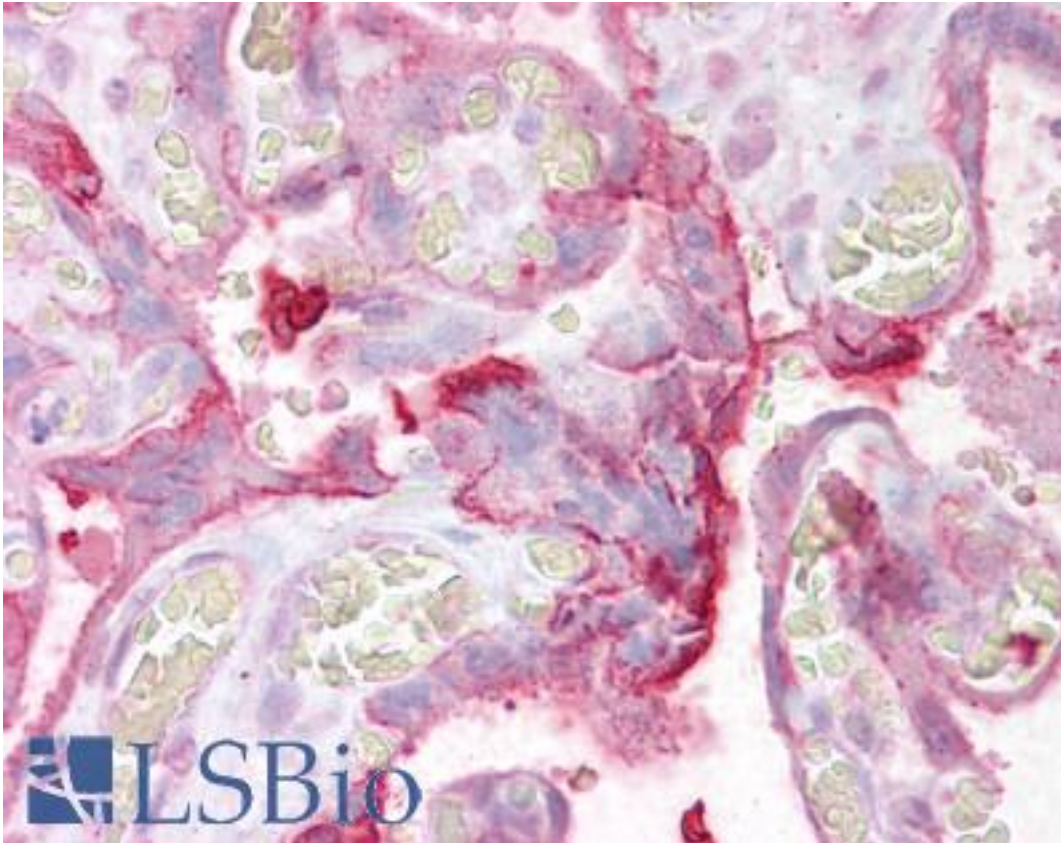


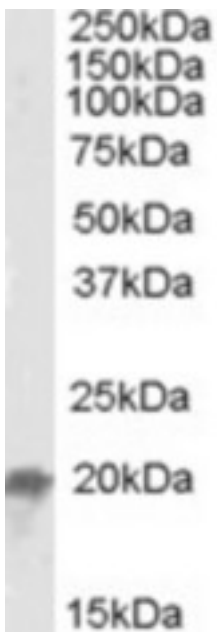
UBE2F Goat anti-Human Polyclonal (C-Terminus) Antibody - LS-B6482 - LSBio	
<b>CatalogID:</b>	LS-B6482
<b>Validation:</b>	This antibody replaces catalog number LS-C108111. It has been validated for use in the following assays: IHC-P.
<b>Target:</b>	ubiquitin-conjugating enzyme E2F (putative) (UBE2F)
<b>Synonyms:</b>	UBE2F Antibody, NCE2 Antibody, NEDD8 carrier protein UBE2F Antibody, NEDD8 protein ligase UBE2F Antibody, NEDD8-conjugating enzyme 2 Antibody, NEDD8-conjugating enzyme UBE2F Antibody
<b>Host</b>	UBE2F antibody was produced in Goat
<b>Clonality:</b>	Polyclonal
<b>Immunogen Species:</b>	UBE2F antibody was raised against Human
<b>Antigen Type:</b>	Synthetic peptide
<b>Immunogen:</b>	UBE2F antibody was raised against synthetic peptide C-HLRDKEDFRNKVDD from the C-terminus of human UBE2F / UBE2F (NP_542409.1). Percent identity by BLAST analysis: Human, Gorilla, Gibbon, Monkey, Marmoset (100%); Dog, Bat, Bovine, Horse, Opossum, Turkey, Chicken, Lizard, Salmon, Zebrafish (93%); Mouse, Rat, Hamster, Elephant, Rabbit, Platypus (86%).
<b>Specificity:</b>	Human UBE2F / UBE2F.
<b>Epitope:</b>	C-Terminus
<b>Reactivity:</b>	Human, Gorilla, Gibbon, Monkey, Mouse
<b>Predicted Reactivity:</b>	Bat, Bovine, Dog, Horse, Chicken, Zebrafish
<b>Purification:</b>	Immunoaffinity purified
<b>Presentation:</b>	Tris-buffered saline, pH 7.3, 0.5% BSA, 0.02% sodium azide
<b>Recommended Storage:</b>	Store at -20°C. Minimize freezing and thawing.
<b>Usage Summary:</b>	Western Blot: Approx. 20kD band observed in Mouse Liver lysates (calculated MW of 21.1kD according to Human NP_542409.1 and to Mouse NP_080730.1). Recommended concentration: 0.05-0.2 ug/ml.
<b>Uses:</b>	IHC - Paraffin (2.5 - 3.75 µg/ml), Western blot (0.05 - 0.2 µg/ml), ELISA (Optimal dilution to be determined by the researcher)
<b>Size:</b>	50 µg
<b>Concentration:</b>	0.5 mg/ml

**Immunohistochemistry Image:**



Anti-UBE2F antibody IHC of human placenta. Immunohistochemistry of formalin-fixed, paraffin-embedded tissue after heat-induced antigen retrieval. Antibody LS-B6482 concentration 2.5 ug/ml.

**Western Blot Image:**



UBE2F antibody (0.05 ug/ml) staining of Mouse Liver lysate (35 ug protein in RIPA buffer). Primary incubation was 1 hour. Detected by chemiluminescence.

<b>Requested From:</b>	Japan
Laboratory Reagent For In Vitro Research Use Only	
Not for resale without prior written consent from LifeSpan BioSciences, Inc.	
Created on 9/24/2014	
© 2014 LifeSpan BioSciences	