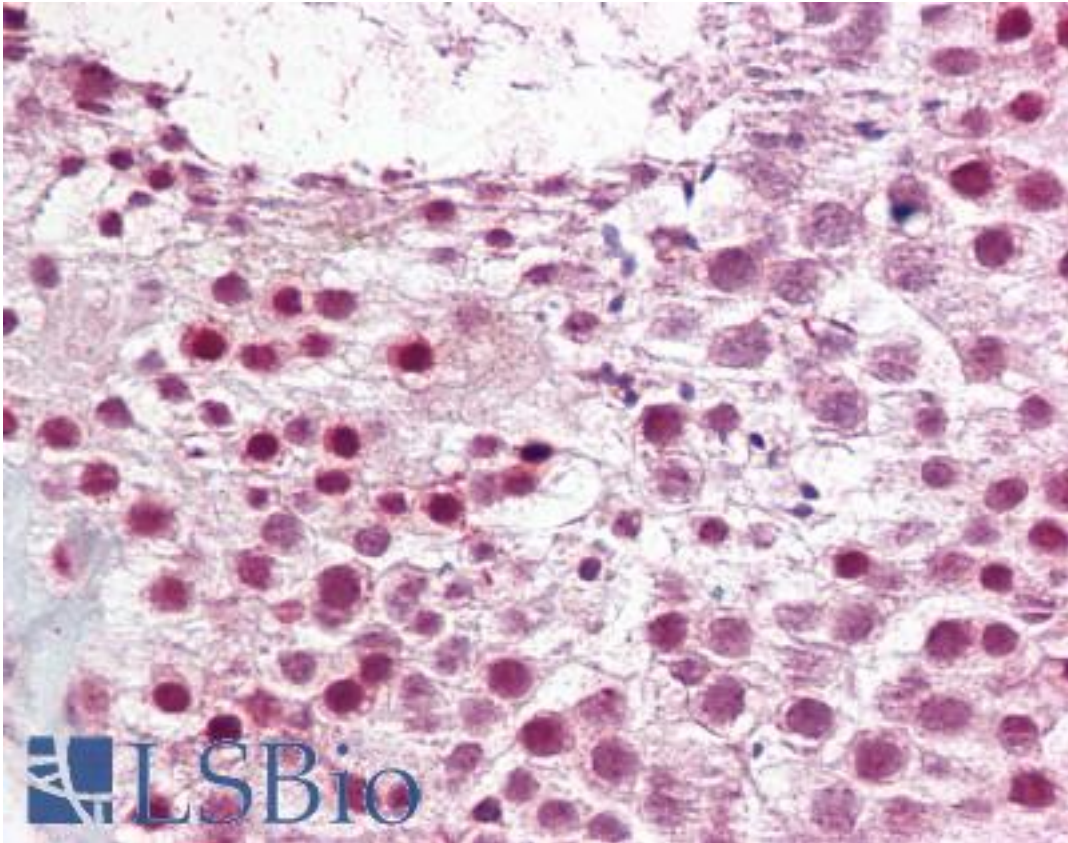


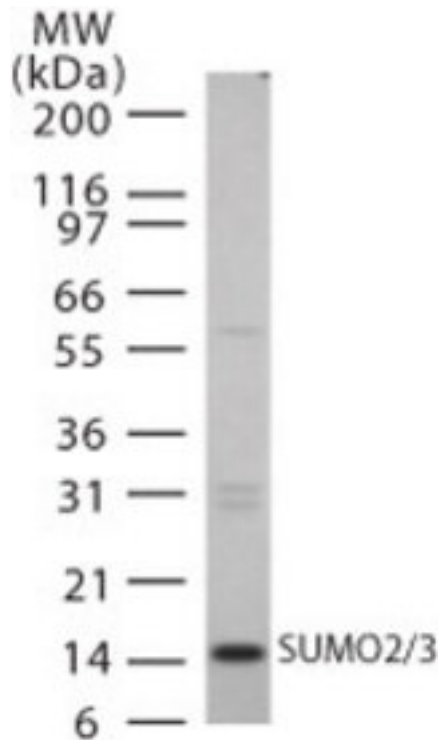
SUMO2 + SUMO3 Rabbit anti-Human Polyclonal Antibody - LS-B6481 - LSBio	
CatalogID:	LS-B6481
Validation:	This antibody replaces catalog number LS-C812. It has been validated for use in the following assays: IHC-P.
Target:	SMT3 Suppressor Of Mif Two 3 Homolog 2/3 (SUMO2/SUMO3)
Host	SMT3 Suppressor Of Mif Two 3 Homolog 2/3 (SUMO2/SUMO3) antibody was produced in Rabbit
Clonality:	Polyclonal
Isotype:	IgG
Immunogen Species:	SUMO2 + SUMO3 antibody was raised against Human
Antigen Type:	Synthetic peptide
Immunogen:	SUMO2 + SUMO3 antibody was raised against synthetic peptide from human SUMO2.
Specificity:	Synthetic peptide corresponding to human SUMO2/3. Cross reacts with mouse SUMO2/3. The peptides used to generate this antibody correspond to amino acids 4-16 of human Sumo2/3 and amino acids 61 to 76 of Sumo2 (aa 60-75 of Sumo 3).
Reactivity:	Human, Mouse
Purification:	Protein G purified
Presentation:	PBS containing 0.05% BSA and 0.05% sodium azide
Recommended Storage:	Long term: -20°C; Short term: +4°C; Avoid freeze-thaw cycles.
Uses:	IHC - Paraffin (10 µg/ml), Western blot (1 - 3 µg/ml) (Optimal dilution to be determined by the researcher)
Size:	50 µg
Concentration:	0.5 mg/ml

Immunohistochemistry Image:



Anti-SUMO2/3 antibody IHC of human testis. Immunohistochemistry of formalin-fixed, paraffin-embedded tissue after heat-induced antigen retrieval. Antibody LS-B6481 concentration 10 ug/ml.

Western Blot Image:



Western blot analysis with 15 ugs of HL60 cell lysate using SUMO2 antibody at 1 ug/ml.

Requested From:

Japan

Laboratory Reagent For In Vitro Research Use Only

Not for resale without prior written consent from LifeSpan BioSciences, Inc.

Created on 9/24/2014

© 2014 LifeSpan BioSciences