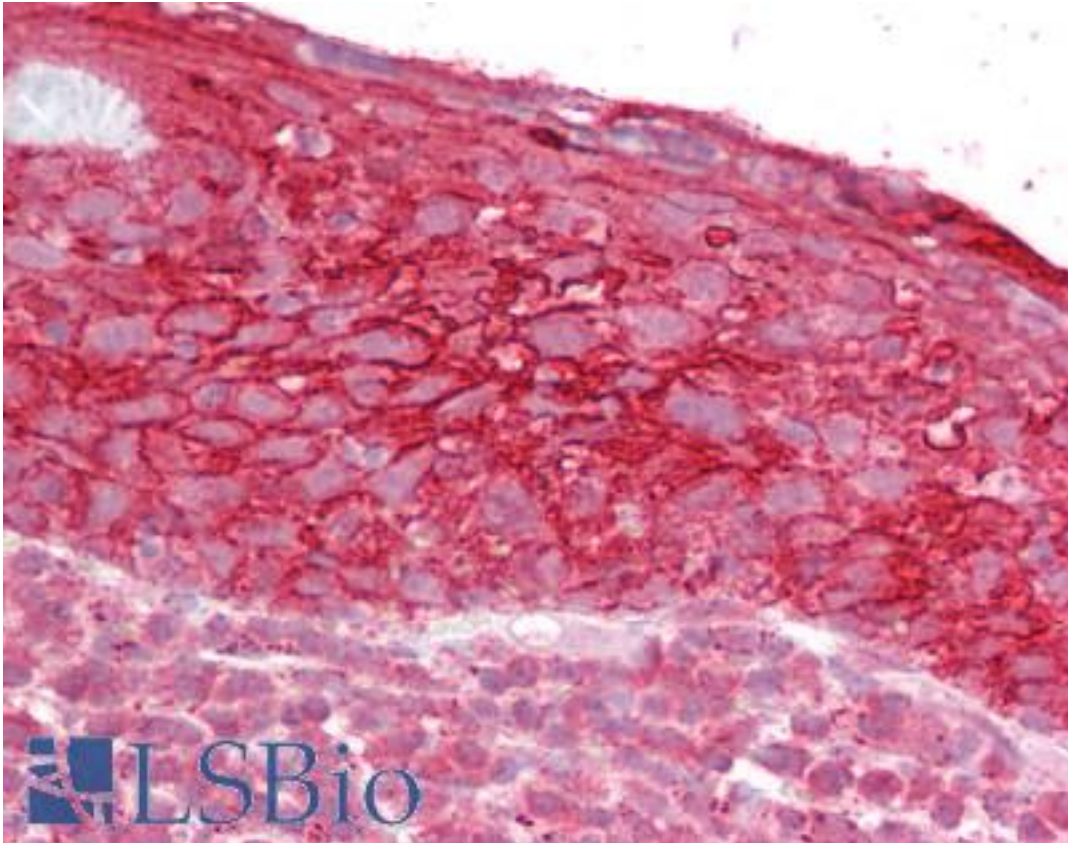


TROP2 / TACSTD2 Goat anti-Human Polyclonal (Internal) Antibody - LS-B6478 - LSBio	
CatalogID:	LS-B6478
Validation:	This antibody replaces catalog number LS-C87346. It has been validated for use in the following assays: IHC-P.
Target:	tumor-associated calcium signal transducer 2 (TACSTD2)
Synonyms:	TACSTD2 Antibody, EGP-1 Antibody, EGP1 Antibody, GA7331 Antibody, M1S1 Antibody, TROP2 Antibody, Epithelial glycoprotein-1 Antibody, GA733-1 Antibody, gp50 Antibody
Host	TACSTD2 antibody was produced in Goat
Clonality:	Polyclonal
Immunogen Species:	TROP2 / TACSTD2 antibody was raised against Human
Antigen Type:	Synthetic peptide
Immunogen:	TROP2 / TACSTD2 antibody was raised against synthetic peptide C-HYEQPTIQIELRQN from an internal region of human TACSTD2 / TROP2 (NP_002344.2). Percent identity by BLAST analysis: Human, Gibbon, Monkey, Bat (100%); Mouse, Panda, Dog, Bovine, Rabbit (93%); Rat, Hamster, Pig, Opossum (86%).
Specificity:	Human TACSTD2 / TROP2.
Epitope:	Internal
Reactivity:	Human, Gibbon, Monkey, Bat
Predicted Reactivity:	Mouse, Bovine, Dog, Rabbit
Purification:	Immunoaffinity purified
Presentation:	Tris-buffered saline, pH 7.3, 0.5% BSA, 0.02% sodium azide
Recommended Storage:	Store at -20°C. Minimize freezing and thawing.
Usage Summary:	Peptide ELISA: antibody detection limit dilution 1:4000. Western Blot: Approx. 37kD band observed in Human Prostate lysates (calculated MW of 35.7kD according to NP_002344.2). Recommended concentration: 0.2-0.5 ug/ml.
Uses:	IHC - Paraffin (2.5 - 3.75 µg/ml), Western blot (0.2 - 0.5 µg/ml), ELISA (1:4000) & (0.2 - 0.5 µg/ml) (Optimal dilution to be determined by the researcher)
Size:	50 µg
Concentration:	0.5 mg/ml

Immunohistochemistry Image:



Anti-TROP2 antibody IHC of human tonsil. Immunohistochemistry of formalin-fixed, paraffin-embedded tissue after heat-induced antigen retrieval. Antibody LS-B6478 concentration 2.5 ug/ml.

Western Blot Image:



Antibody (0.2 ug/ml) staining of Human Prostate lysate (35 ug protein in RIPA buffer). Primary incubation was 1 hour. Detected by chemiluminescence.

Requested From:

Japan

Laboratory Reagent For In Vitro Research Use Only

Not for resale without prior written consent from LifeSpan BioSciences, Inc.

Created on 9/24/2014

© 2014 LifeSpan BioSciences