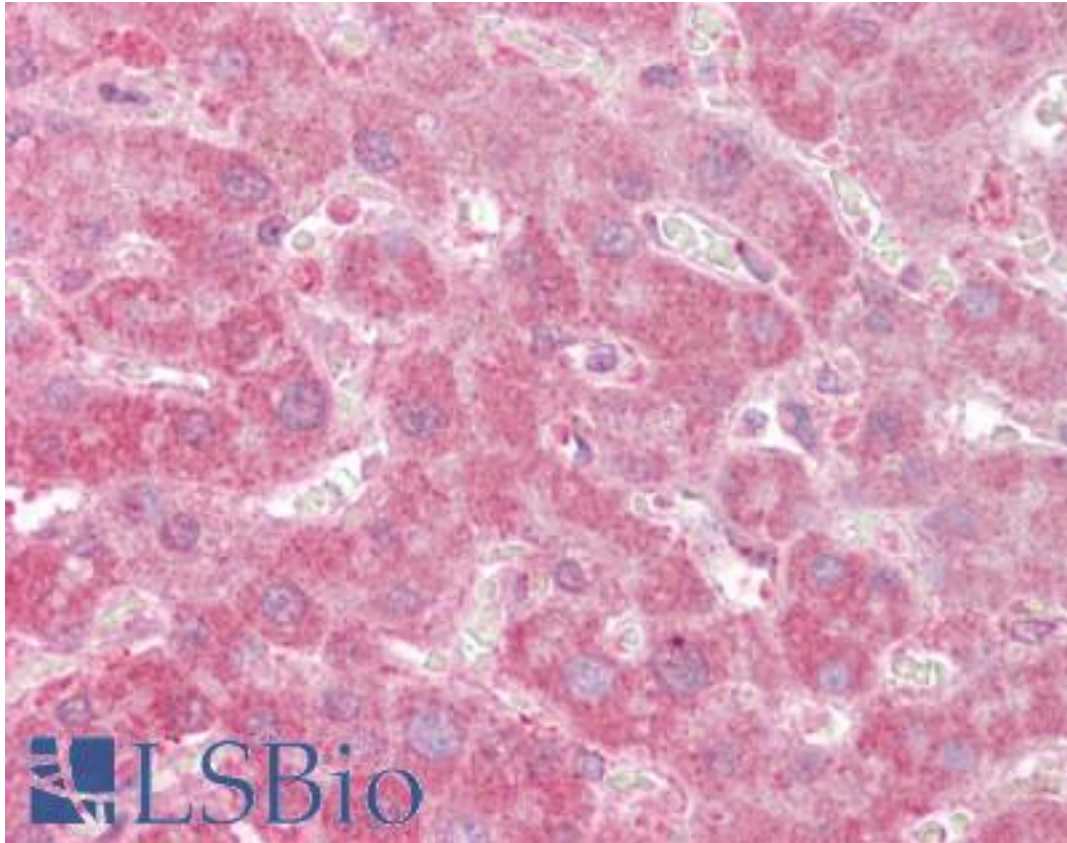


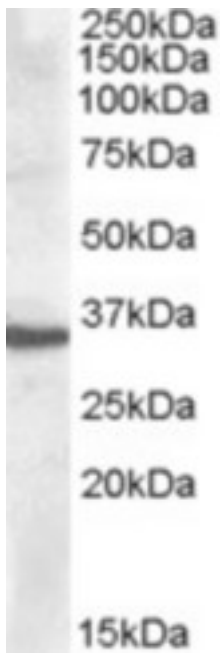
APOF / Apolipoprotein F Goat anti-Human Polyclonal (C-Terminus) Antibody - LS-B6477 - LSBio	
<b>CatalogID:</b>	LS-B6477
<b>Validation:</b>	This antibody replaces catalog number LS-C87328. It has been validated for use in the following assays: IHC-P.
<b>Target:</b>	apolipoprotein F (APOF)
<b>Synonyms:</b>	APOF Antibody, Apo-F Antibody, LTIP Antibody, Apolipoprotein F Antibody
<b>Host</b>	APOF antibody was produced in Goat
<b>Clonality:</b>	Polyclonal
<b>Immunogen Species:</b>	APOF / Apolipoprotein F antibody was raised against Human
<b>Antigen Type:</b>	Synthetic peptide
<b>Immunogen:</b>	APOF / Apolipoprotein F antibody was raised against synthetic peptide C-KSYDLDPGAGSLE from the C-terminus of human APOF / Apolipoprotein F (NP_001629.1). Percent identity by BLAST analysis: Human, Gorilla, Orangutan, Gibbon (100%); Monkey (92%); Marmoset (85%).
<b>Specificity:</b>	Human APOF / Apolipoprotein F.
<b>Epitope:</b>	C-Terminus
<b>Reactivity:</b>	Human, Gorilla, Orangutan, Gibbon
<b>Predicted Reactivity:</b>	Monkey
<b>Purification:</b>	Immunoaffinity purified
<b>Presentation:</b>	Tris-buffered saline, pH 7.3, 0.5% BSA, 0.02% sodium azide
<b>Recommended Storage:</b>	Store at -20°C. Minimize freezing and thawing.
<b>Usage Summary:</b>	Peptide ELISA: antibody detection limit dilution 1:32000. Western Blot: Approx. 35kD band observed in Human Liver lysates (calculated MW of 35.4kD according to NP_001629.1). Recommended concentration: 0.3-1 ug/ml.
<b>Uses:</b>	IHC - Paraffin (1.25 - 3.75 µg/ml), Western blot (0.3 - 1 µg/ml), ELISA (1:32000) & (0.3 - 1 µg/ml) (Optimal dilution to be determined by the researcher)
<b>Size:</b>	50 µg
<b>Concentration:</b>	0.5 mg/ml

**Immunohistochemistry Image:**



Anti-APOF / Apolipoprotein F antibody IHC of human liver. Immunohistochemistry of formalin-fixed, paraffin-embedded tissue after heat-induced antigen retrieval. Antibody LS-B6477 concentration 1.25 ug/ml.

**Western Blot Image:**



Antibody (0.5 ug/ml) staining of Human Liver lysate (35 ug protein in RIPA buffer). Primary incubation was 1 hour. Detected by chemiluminescence.

**Requested From:**

Japan

Laboratory Reagent For In Vitro Research Use Only

Not for resale without prior written consent from LifeSpan BioSciences, Inc.

Created on 9/24/2014

© 2014 LifeSpan BioSciences