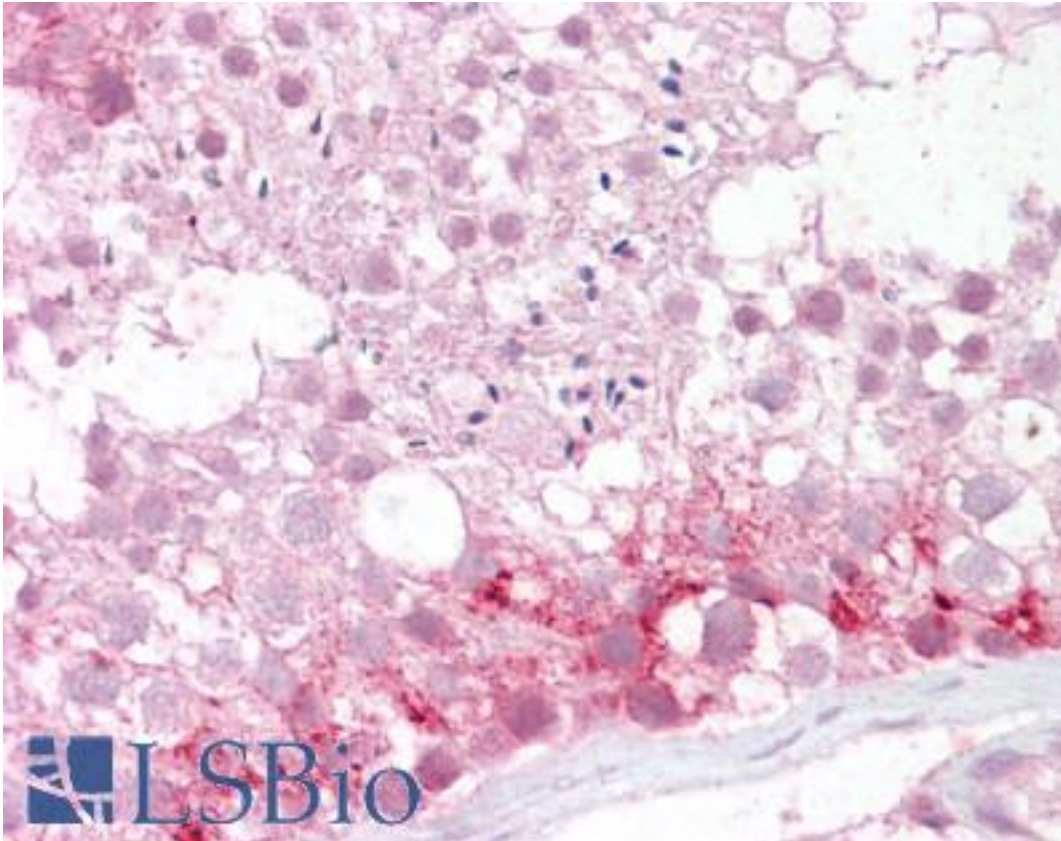


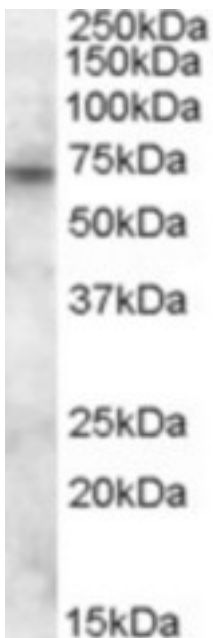
PMP70 Goat anti-Human Polyclonal (Internal) Antibody - LS-B6476 - LSBio	
CatalogID:	LS-B6476
Validation:	This antibody replaces catalog number LS-C87315. It has been validated for use in the following assays: IHC-P.
Target:	ATP-binding cassette, sub-family D (ALD), member 3 (ABCD3)
Synonyms:	ABCD3 Antibody, ABC43 Antibody, PMP70 Antibody, PXMP1 Antibody, ZWS2 Antibody, Peroxisomal membrane protein 1 Antibody, PMP68 Antibody
Family / Subfamily:	Transporter / ATP-binding cassette - ABCD/ALD
Host	ABCD3 antibody was produced in Goat
Clonality:	Polyclonal
Immunogen Species:	PMP70 antibody was raised against Human
Antigen Type:	Synthetic peptide
Immunogen:	PMP70 antibody was raised against synthetic peptide C-PDGREDQKRKGISD from an internal region of human ABCD3 / PMP70 (NP_002849.1). Percent identity by BLAST analysis: Human, Gorilla, Orangutan, Gibbon, Monkey, Marmoset, Elephant, Dog, Bat, Horse (100%); Panda, Rabbit, Opossum (93%); Rat, Hamster, Bovine, Platypus, Xenopus (86%).
Specificity:	Human ABCD3 / PMP70. This antibody is expected to recognize one isoform (NP_002849.1) only.
Epitope:	Internal
Reactivity:	Human, Gorilla, Orangutan, Gibbon, Monkey, Bat, Dog, Horse
Predicted Reactivity:	Rabbit
Purification:	Immunoaffinity purified
Presentation:	Tris-buffered saline, pH 7.3, 0.5% BSA, 0.02% sodium azide
Recommended Storage:	Store at -20°C. Minimize freezing and thawing.
Usage Summary:	Peptide ELISA: antibody detection limit dilution 1:16000. Western Blot: Approx. 70kD band observed in Human Kidney lysates (calculated MW of 75.5kD according to NP_002849.1). Recommended concentration: 0.2-0.6 ug/ml.
Uses:	IHC - Paraffin (2.5 - 3.75 µg/ml), Western blot (0.2 - 0.6 µg/ml), ELISA (1:16000) & (0.2 - 0.6 µg/ml) (Optimal dilution to be determined by the researcher)
Size:	50 µg
Concentration:	0.5 mg/ml

Immunohistochemistry Image:



Anti-ABCD3 / PMP70 antibody IHC of human testis. Immunohistochemistry of formalin-fixed, paraffin-embedded tissue after heat-induced antigen retrieval. Antibody LS-B6476 concentration 2.5 ug/ml.

Western Blot Image:



Antibody (0.2 ug/ml) staining of Human Kidney lysate (35 ug protein in RIPA buffer). Primary incubation was 1 hour. Detected by chemiluminescence.

Requested From:	Japan
Laboratory Reagent For In Vitro Research Use Only	
Not for resale without prior written consent from LifeSpan BioSciences, Inc.	
Created on 9/24/2014	
© 2014 LifeSpan BioSciences	