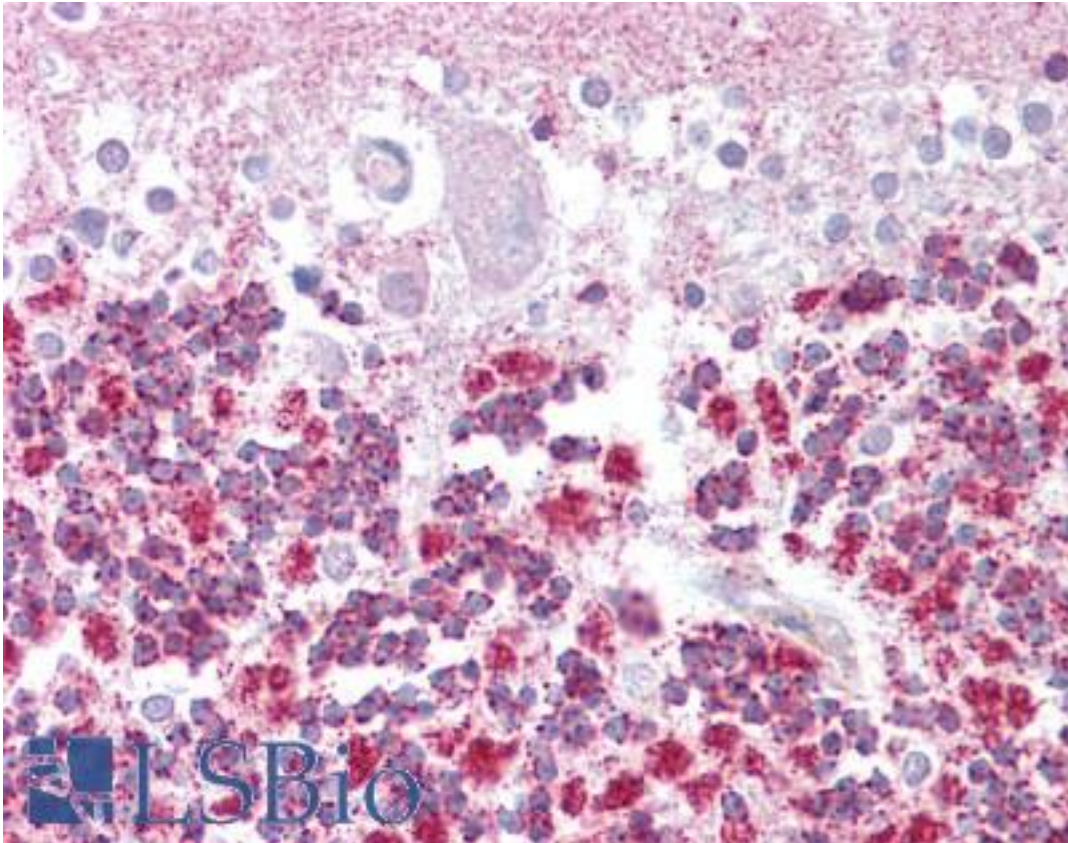


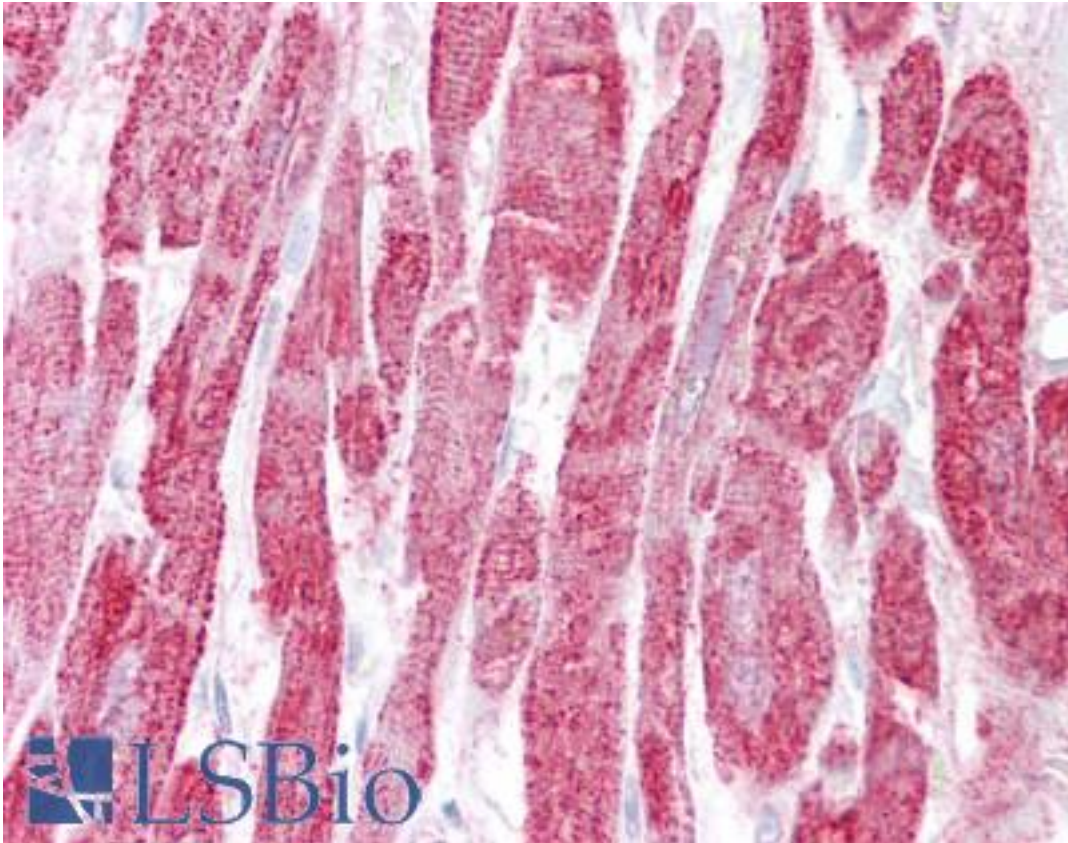
EPM2A / Laforin Goat anti-Human Polyclonal (Internal) Antibody - LS-B6474 - LSBio	
CatalogID:	LS-B6474
Validation:	This antibody replaces catalog number LS-C87285. It has been validated for use in the following assays: IHC-P.
Target:	epilepsy, progressive myoclonus type 2A, Lafora disease (laforin) (EPM2A)
Synonyms:	EPM2A Antibody, EPM2 Antibody, LAFPTPase Antibody, LDE Antibody, Lafora PTPase Antibody, MELF Antibody, Laforin Antibody, LD Antibody
Family / Subfamily:	Protein Phosphatase / Laforin
Host	EPM2A antibody was produced in Goat
Clonality:	Polyclonal
Immunogen Species:	EPM2A / Laforin antibody was raised against Human
Antigen Type:	Synthetic peptide
Immunogen:	EPM2A / Laforin antibody was raised against synthetic peptide C-EATGHTNEMKHTTD from an internal region of human EPM2A (NP_005661.1). Percent identity by BLAST analysis: Human, Gibbon, Monkey, Marmoset, Mouse, Rat, Elephant, Panda, Bovine, Bat, Dog, Rabbit, Pig, Opossum (100%); Xenopus (93%).
Specificity:	Human EPM2A. This antibody is expected to recognize isoform a (NP_005661.1) only.
Epitope:	Internal
Reactivity:	Human, Gibbon, Monkey, Mouse, Rat, Bat, Bovine, Dog, Pig, Rabbit
Predicted Reactivity:	Xenopus
Purification:	Immunoaffinity purified
Presentation:	Tris-buffered saline, pH 7.3, 0.5% BSA, 0.02% sodium azide
Recommended Storage:	Store at -20°C. Minimize freezing and thawing.
Usage Summary:	Peptide ELISA: antibody detection limit dilution 1:16000. Western Blot: Approx. 38kD band observed in Human Brain (Cerebellum), Mouse Brain and Rat Brain lysates (calculated MW of 37.2kD according to NP_005661.1). Recommended concentration: 0.1-0.3 ug/ml.
Uses:	IHC - Paraffin (2.5 - 3.75 µg/ml), Western blot (0.1 - 0.3 µg/ml), ELISA (1:16000) & (0.1 - 0.3 µg/ml) (Optimal dilution to be determined by the researcher)
Size:	50 µg
Concentration:	0.5 mg/ml

Immunohistochemistry Image:



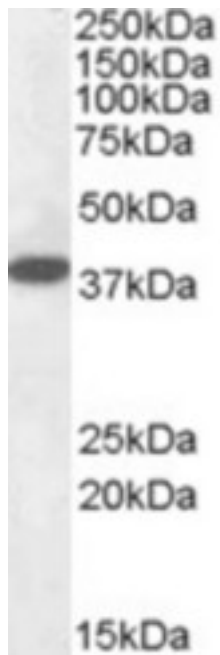
Anti-EPM2A antibody IHC of human brain, cerebellum. Immunohistochemistry of formalin-fixed, paraffin-embedded tissue after heat-induced antigen retrieval. Antibody LS-B6474 concentration 2.5 ug/ml.

Immunohistochemistry Image:



Anti-EPM2A antibody IHC of human heart. Immunohistochemistry of formalin-fixed, paraffin-embedded tissue after heat-induced antigen retrieval. Antibody LS-B6474 concentration 2.5 ug/ml.

Western Blot Image:



Antibody (0.1 ug/ml) staining of Human Cerebellum lysate (35 ug protein in RIPA buffer).
Primary incubation was 1 hour. Detected by chemiluminescence.

Requested From:

Japan

Laboratory Reagent For In Vitro Research Use Only

Not for resale without prior written consent from LifeSpan BioSciences, Inc.

Created on 9/24/2014

© 2014 LifeSpan BioSciences