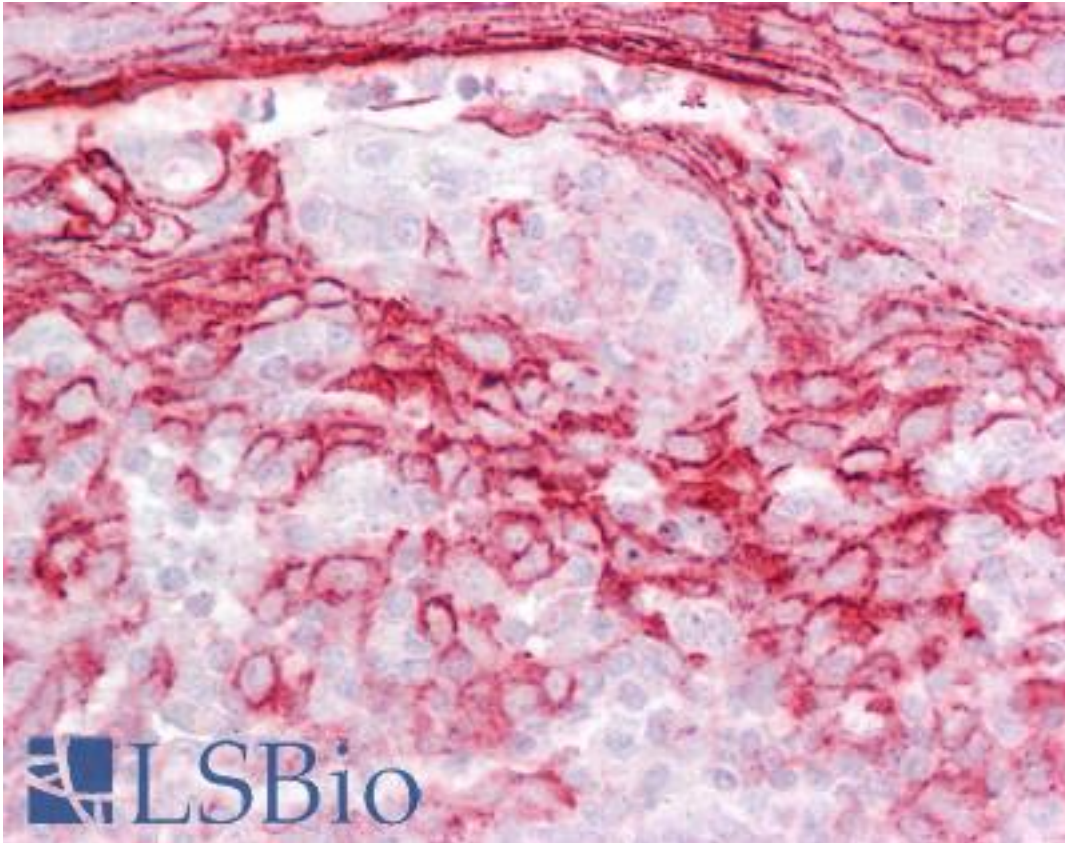


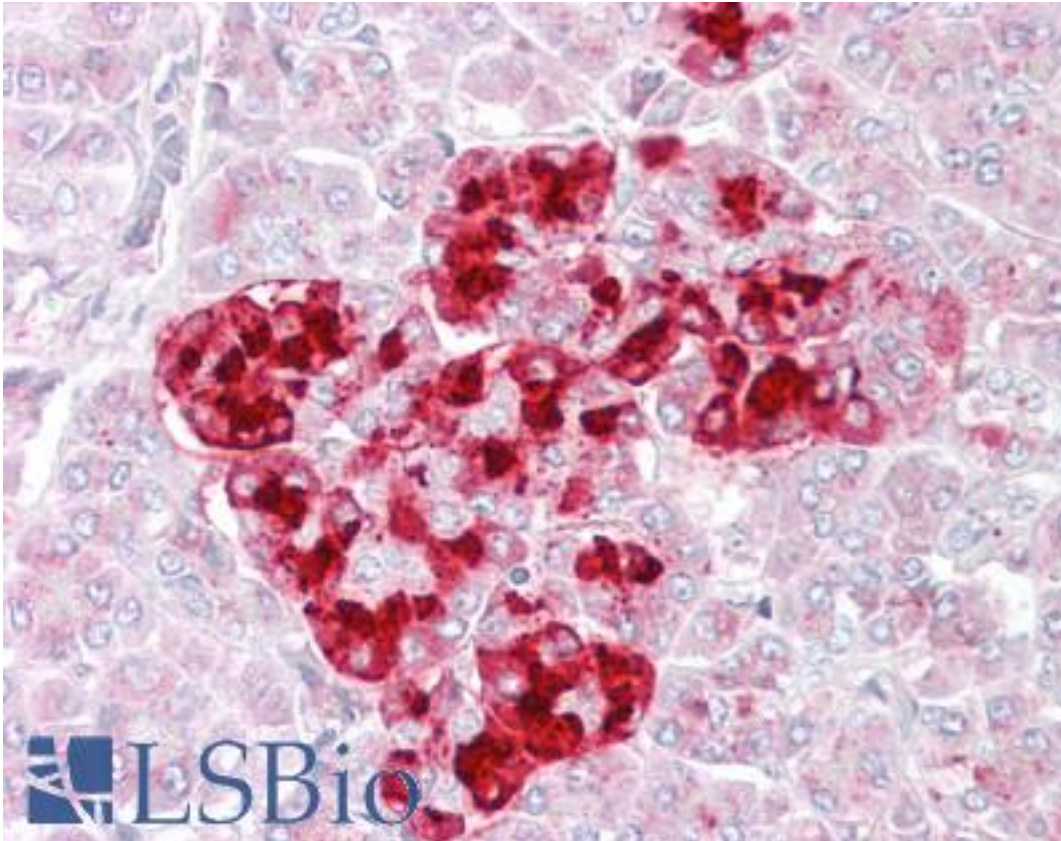
| IGFBP7 / TAF Goat anti-Human Polyclonal (Internal) Antibody - LS-B6473 - LSBio | |
|--------------------------------------------------------------------------------|------------------------------------------------------------------------------------------------------------------------------------------------------------------------------------------------------------------------------------------------------------------------------------------------------------------------------------------------------------------|
| CatalogID: | LS-B6473 |
| Validation: | This antibody replaces catalog number LS-C55001. It has been validated for use in the following assays: IHC-P. |
| Target: | insulin-like growth factor binding protein 7 (IGFBP7) |
| Synonyms: | IGFBP7 Antibody, AGM Antibody, FSTL2 Antibody, IGFBP-7v Antibody, IGFBP-rP1 Antibody, IBP-7 Antibody, Angiomodulin Antibody, RAMSVPS Antibody, MAC25 protein Antibody, PSF Antibody, TAF Antibody, Tumor-derived adhesion factor Antibody, IGF-binding protein 7 Antibody, IGFBP-7 Antibody, IGFBPRP1 Antibody, MAC25 Antibody, PGI2-stimulating factor Antibody |
| Host | IGFBP7 antibody was produced in Goat |
| Clonality: | Polyclonal |
| Immunogen Species: | IGFBP7 / TAF antibody was raised against Human |
| Antigen Type: | Synthetic peptide |
| Immunogen: | IGFBP7 / TAF antibody was raised against synthetic peptide C-NKVKRGHYGVQRTE from an internal region of human IGFBP7 (NP_001544.1). Percent identity by BLAST analysis: Human, Gorilla, Gibbon, Monkey, Marmoset, Sheep, Elephant, Bovine, Horse (100%); Dog, Rabbit, Pig, Opossum (93%); Mouse, Rat (86%). |
| Specificity: | Human IGFBP7. |
| Epitope: | Internal |
| Reactivity: | Human, Gorilla, Gibbon, Monkey, Bovine, Horse, Sheep |
| Predicted Reactivity: | Dog, Pig, Rabbit |
| Purification: | Immunoaffinity purified |
| Presentation: | Tris-buffered saline, pH 7.3, 0.5% BSA, 0.02% sodium azide |
| Recommended Storage: | Store at -20°C. Minimize freezing and thawing. |
| Uses: | IHC - Paraffin (2.5 - 3.75 µg/ml), ELISA (1:16000) (Optimal dilution to be determined by the researcher) |
| Size: | 50 µg |
| Concentration: | 0.5 mg/ml |

Immunohistochemistry Image:



Anti-IGFBP7 antibody IHC of human tonsil. Immunohistochemistry of formalin-fixed, paraffin-embedded tissue after heat-induced antigen retrieval. Antibody LS-B6473 concentration 2.5 ug/ml.

Immunohistochemistry Image:



Anti-IGFBP7 antibody IHC of human pancreas. Immunohistochemistry of formalin-fixed, paraffin-embedded tissue after heat-induced antigen retrieval. Antibody LS-B6473 concentration 2.5 ug/ml.

Requested From:

Japan

Laboratory Reagent For In Vitro Research Use Only

Not for resale without prior written consent from LifeSpan BioSciences, Inc.

Created on 9/24/2014

© 2014 LifeSpan BioSciences