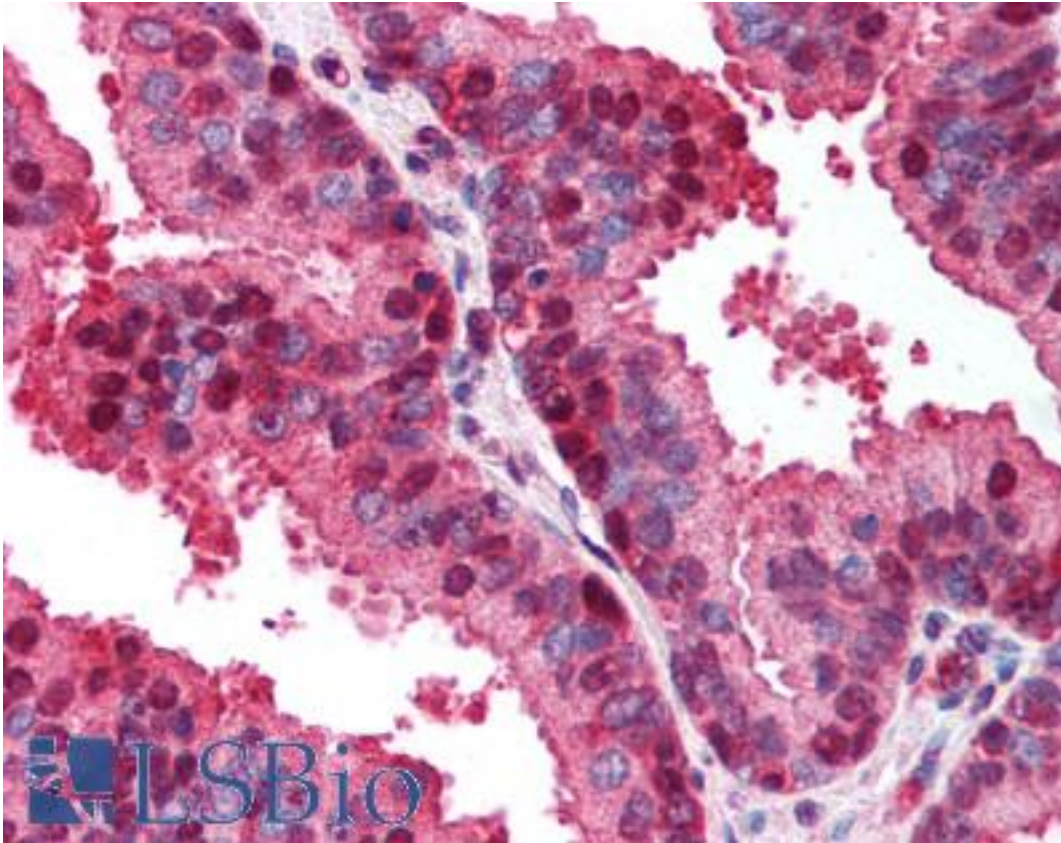


CDKN2A / p16INK4a Rabbit anti-Human Polyclonal Antibody - LS-B647 - LSBio	
<b>CatalogID:</b>	LS-B647
<b>Validation:</b>	This antibody replaces catalog number LS-C18784. It has been validated for use in the following assays: IHC.
<b>Target:</b>	cyclin-dependent kinase inhibitor 2A (CDKN2A)
<b>Synonyms:</b>	CDKN2A Antibody, ARF Antibody, Cdk4 inhibitor Antibody, CDK4 inhibitor p16-INK4 Antibody, INK4 Antibody, INK4A Antibody, Multiple tumor suppressor 1 Antibody, MTS-1 Antibody, MTS1 Antibody, p16-INK4 Antibody, p16-INK4A Antibody, p16INK4 Antibody, p19 Antibody, p14 Antibody, p16 Antibody, p16 INK4A Antibody, p16INK4A Antibody, p14ARF Antibody, TP16 Antibody, CDK4I Antibody, CDKN2 Antibody, CMM2 Antibody, MLM Antibody, p19ARF Antibody
<b>Host</b>	CDKN2A antibody was produced in Rabbit
<b>Clonality:</b>	Polyclonal
<b>Immunogen Species:</b>	CDKN2A / p16INK4a antibody was raised against Human
<b>Antigen Type:</b>	Synthetic peptide
<b>Immunogen:</b>	CDKN2A / p16INK4a antibody was raised against human p16 protein (missing the first 7 amino acids).
<b>Specificity:</b>	Human p16 protein (missing the first 7 amino acids).
<b>Reactivity:</b>	Human
<b>Purification:</b>	Delipidated and defibrinated
<b>Presentation:</b>	0.01% sodium azide.
<b>Recommended Storage:</b>	+4°C or -20°C, Avoid repeated freezing and thawing.
<b>Usage Summary:</b>	Immunohistochemistry: LS-B647 was validated for use in immunohistochemistry on a panel of 21 formalin-fixed, paraffin-embedded (FFPE) human tissues after heat induced antigen retrieval in pH 6.0 citrate buffer. After incubation with the primary antibody, slides were incubated with biotinylated secondary antibody, followed by alkaline phosphatase-streptavidin and chromogen. The stained slides were evaluated by a pathologist to confirm staining specificity. The optimal working concentration for LS-B647 was determined to be 1:500.
<b>Uses:</b>	IHC - Paraffin (1:500), Immunofluorescence, Western blot, Immunoprecipitation, ELISA (Optimal dilution to be determined by the researcher)
<b>Size:</b>	50 µl
<b>Concentration:</b>	85 mg/ml

**Immunohistochemistry Image:**



Anti-p16INK4A antibody IHC of human prostate. Immunohistochemistry of formalin-fixed, paraffin-embedded tissue after heat-induced antigen retrieval. Antibody LS-B647 dilution 1:500.

**Requested From:**

Japan

Laboratory Reagent For In Vitro Research Use Only

Not for resale without prior written consent from LifeSpan BioSciences, Inc.

Created on 9/24/2014

© 2014 LifeSpan BioSciences