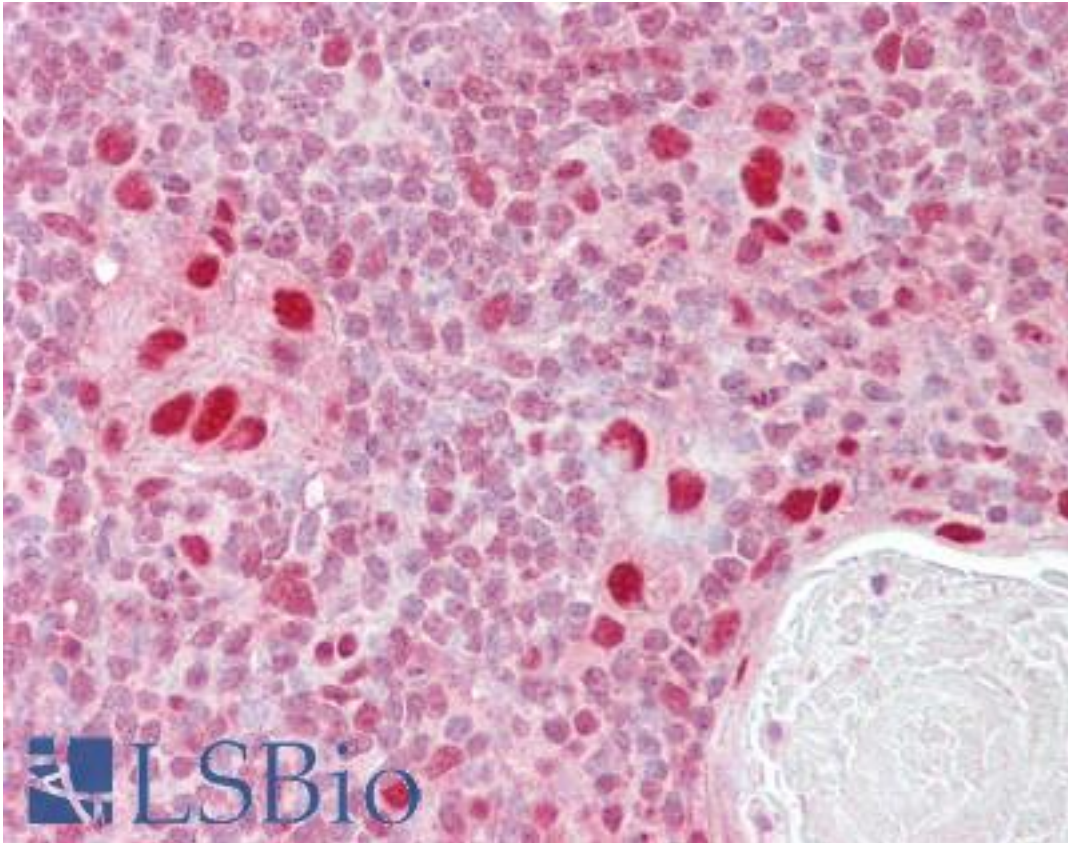


MSH5 Goat anti-Human Polyclonal (Internal) Antibody - LS-B6469 - LSBio

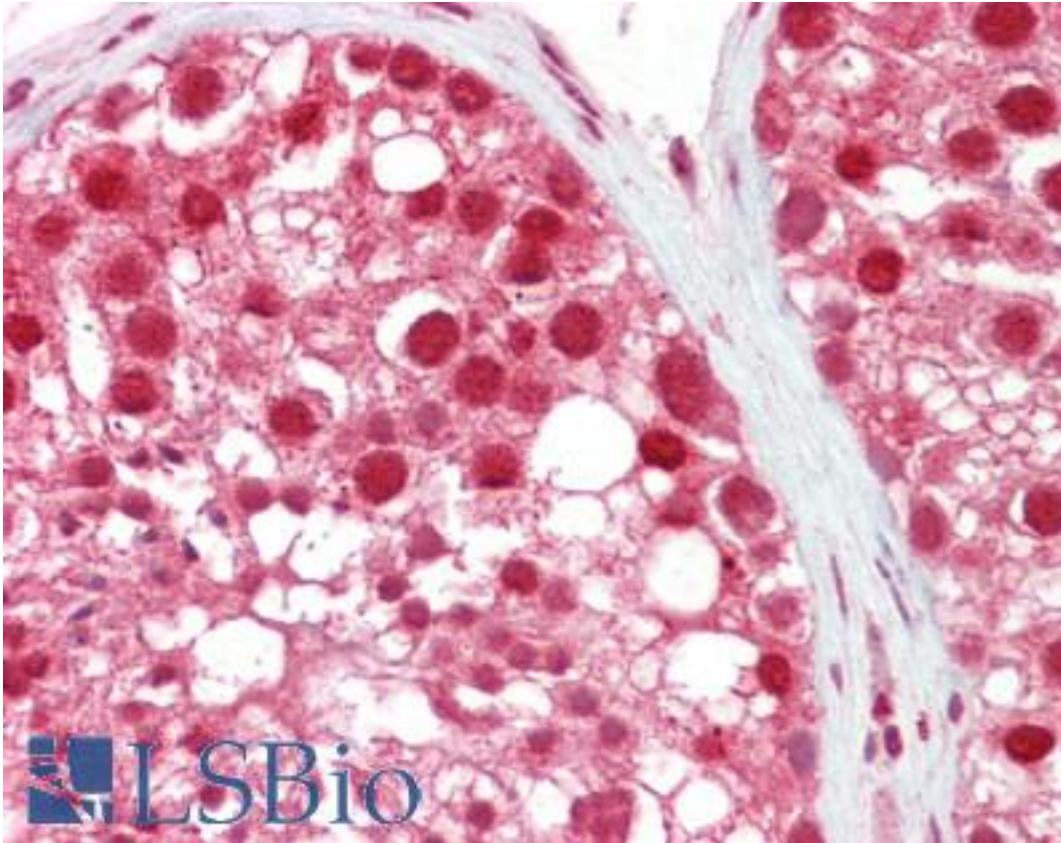
<b>CatalogID:</b>	LS-B6469
<b>Validation:</b>	This antibody replaces catalog number LS-C87238. It has been validated for use in the following assays: IHC-P.
<b>Target:</b>	mutS homolog 5 (MSH5)
<b>Synonyms:</b>	MSH5 Antibody, MutS homolog 5 (E. coli) Antibody, HMSH5 Antibody, MutS protein homolog 5 Antibody, NG23 Antibody, G7 Antibody, MutS (E. coli) homolog 5 Antibody, MUTSH5 Antibody
<b>Host</b>	MSH5 antibody was produced in Goat
<b>Clonality:</b>	Polyclonal
<b>Immunogen Species:</b>	MSH5 antibody was raised against Human
<b>Antigen Type:</b>	Synthetic peptide
<b>Immunogen:</b>	MSH5 antibody was raised against synthetic peptide GDLHCEIRDQET from an internal region of human MSH5 (NP_079535.3 ; NP_751897.1; NP_002432.1). Percent identity by BLAST analysis: Human, Gibbon, Monkey, Mouse, Chicken, Xenopus (100%); Rat, Panda, Bovine, Dog, Horse, Pig (92%); Marmoset (83%).
<b>Specificity:</b>	Human MSH5. This antibody is expected to recognise three reported isoforms ( NP_079535.3 ; NP_751897.1; NP_002432.1); Reported variants NP_751898.1 and NP_002432.1 represent identical protein.
<b>Epitope:</b>	Internal
<b>Reactivity:</b>	Human, Gibbon, Monkey, Mouse, Chicken, Xenopus
<b>Predicted Reactivity:</b>	Rat, Bovine, Dog, Horse, Pig
<b>Purification:</b>	Immunoaffinity purified
<b>Presentation:</b>	Tris-buffered saline, pH 7.3, 0.5% BSA, 0.02% sodium azide
<b>Recommended Storage:</b>	Store at -20°C. Minimize freezing and thawing.
<b>Usage Summary:</b>	Peptide ELISA: antibody detection limit dilution 1:64000. Western Blot: Preliminary experiments gave an approx 38kD band in Human Heart, Tonsil and Thymus lysates after 0.1 ug/ml antibody staining. Please note that currently we cannot find an explanation in the literature for the band we observe given the calculated size of 92.9kD according to the smallest reported isoform NP_002432.1. The 38kD band was successfully blocked by incubation with the immunizing peptide. We would appreciate any feedback from people in the field - have any results been reported with other antibodies / lysates? Have any further splice variants / modified forms been reported?
<b>Uses:</b>	IHC - Paraffin (2.5 - 3.75 µg/ml), ELISA (1:64000) (Optimal dilution to be determined by the researcher)
<b>Size:</b>	50 µg
<b>Concentration:</b>	0.5 mg/ml

**Immunohistochemistry Image:**



Anti-MSH5 antibody IHC of human thymus. Immunohistochemistry of formalin-fixed, paraffin-embedded tissue after heat-induced antigen retrieval. Antibody LS-B6469 concentration 2.5 ug/ml.

**Immunohistochemistry Image:**



Anti-MSH5 antibody IHC of human testis. Immunohistochemistry of formalin-fixed, paraffin-embedded tissue after heat-induced antigen retrieval. Antibody LS-B6469 concentration 2.5 ug/ml.

**Requested From:**

Japan

Laboratory Reagent For In Vitro Research Use Only

Not for resale without prior written consent from LifeSpan BioSciences, Inc.

Created on 9/24/2014

© 2014 LifeSpan BioSciences