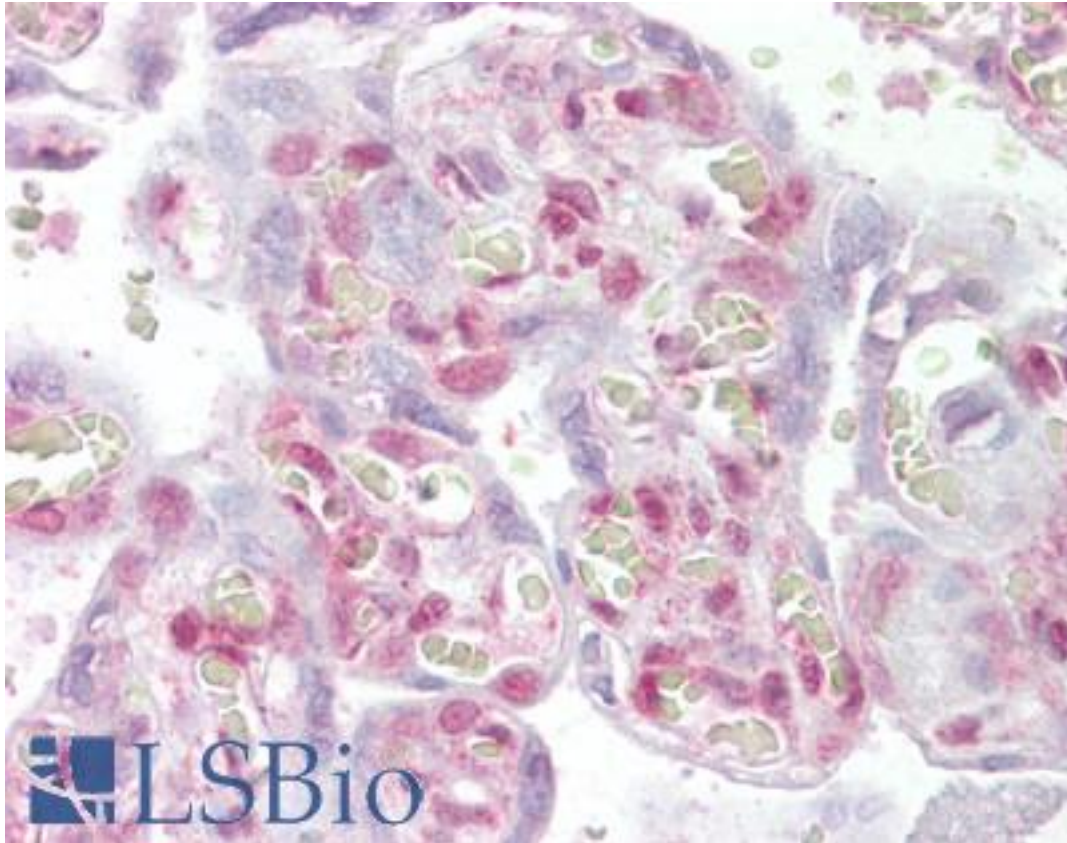


NHEJ1 / XLF Goat anti-Human Polyclonal (C-Terminus) Antibody - LS-B6468 - LSBio

CatalogID:	LS-B6468
Validation:	This antibody replaces catalog number LS-C55699. It has been validated for use in the following assays: IHC-P.
Target:	nonhomologous end-joining factor 1 (NHEJ1)
Synonyms:	NHEJ1 Antibody, Cernunnos Antibody, Protein cernunnos Antibody, XRCC4-like factor Antibody, XLF Antibody
Host	NHEJ1 antibody was produced in Goat
Clonality:	Polyclonal
Immunogen Species:	NHEJ1 / XLF antibody was raised against Human
Antigen Type:	Synthetic peptide
Immunogen:	NHEJ1 / XLF antibody was raised against synthetic peptide C-QRPQLSKVKRKKPR from the C-terminus of human NHEJ1 (NP_079058.1). Percent identity by BLAST analysis: Human, Gorilla, Orangutan, Baboon, Monkey, Marmoset (100%); Gibbon, Dog (93%).
Specificity:	Human NHEJ1.
Epitope:	C-Terminus
Reactivity:	Human, Gorilla, Orangutan, Monkey
Predicted Reactivity:	Gibbon, Dog
Purification:	Immunoaffinity purified
Presentation:	Tris-buffered saline, pH 7.3, 0.5% BSA, 0.02% sodium azide
Recommended Storage:	Store at -20°C. Minimize freezing and thawing.
Uses:	IHC - Paraffin (2.5 - 3.75 µg/ml), Western blot (0.1 - 0.3 µg/ml), ELISA (1:64000) (Optimal dilution to be determined by the researcher)
Size:	50 µg
Concentration:	0.5 mg/ml

Immunohistochemistry Image:



Anti-NHEJ1 antibody IHC of human placenta. Immunohistochemistry of formalin-fixed, paraffin-embedded tissue after heat-induced antigen retrieval. Antibody LS-B6468 concentration 2.5 ug/ml.

Western Blot Image:



Antibody (0.1 ug/ml) staining of Human Thyroid lysate (35 ug protein in RIPA buffer). Primary incubation was 1 hour. Detected by chemiluminescence.

Requested From:

Japan

Laboratory Reagent For In Vitro Research Use Only

Not for resale without prior written consent from LifeSpan BioSciences, Inc.

Created on 9/24/2014

© 2014 LifeSpan BioSciences