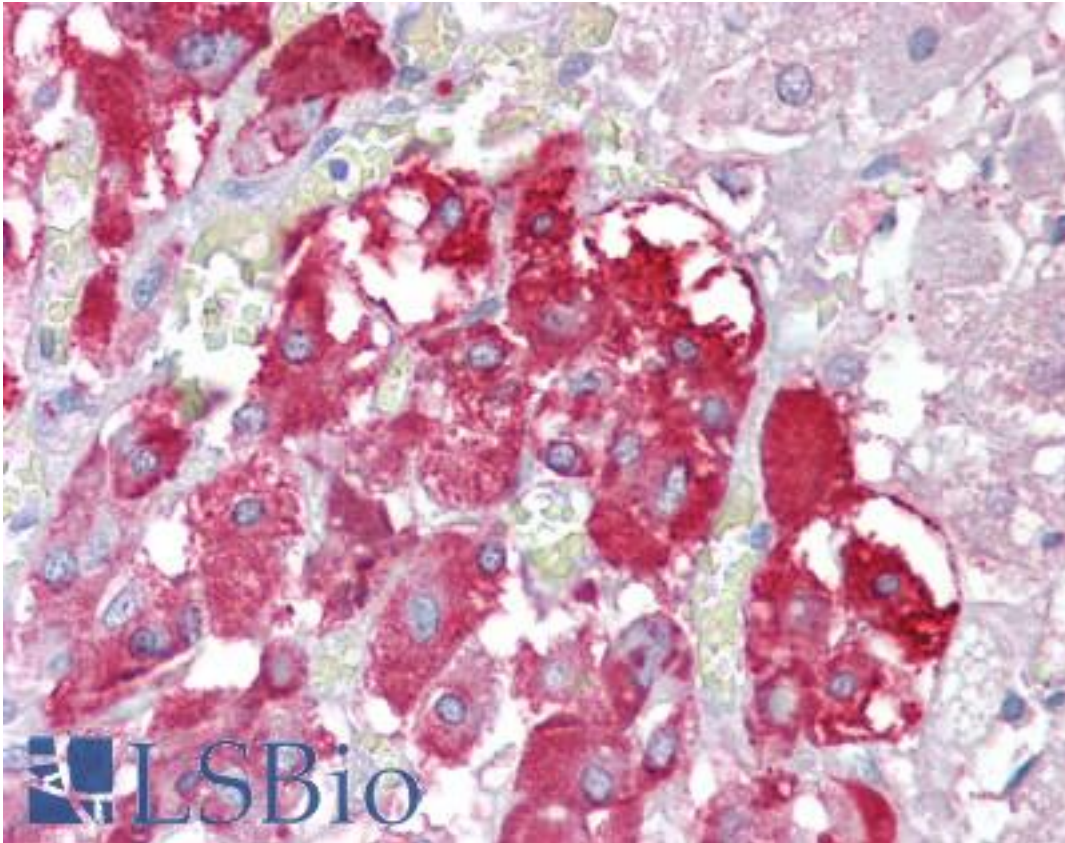


TPTE Goat anti-Human Polyclonal (Internal) Antibody - LS-B6467 - LSBio

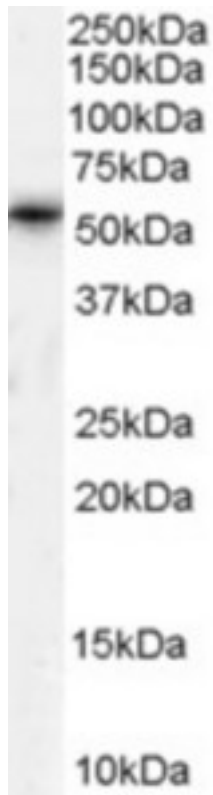
CatalogID:	LS-B6467
Validation:	This antibody replaces catalog number LS-C55609. It has been validated for use in the following assays: IHC-P.
Target:	transmembrane phosphatase with tensin homology (TPTE)
Synonyms:	TPTE Antibody, Cancer/testis antigen 44 Antibody, CT44 Antibody, PTEN2 Antibody, Tumor antigen BJ-HCC-5 Antibody
Family / Subfamily:	Protein Phosphatase / PTEN
Host	TPTE antibody was produced in Goat
Clonality:	Polyclonal
Immunogen Species:	TPTE antibody was raised against Human
Antigen Type:	Synthetic peptide
Immunogen:	TPTE antibody was raised against synthetic peptide C-ERRTDKTHSEKFQ from an internal region of human TPTE (NP_954870.2; NP_954868.1; NP_954869.1). Percent identity with other species by BLAST analysis: Human (100%), Gibbon (92%), Monkey (85%), Marmoset (85%).
Specificity:	Human TPTE. This antibody is expected to recognise all reported isoforms (NP_954870.2, NP_954868.1 and NP_954869.1). It may cross-react with the almost identical TPTE2 (GeneID 93492; NP_570141.2, NP_954864.1, NP_954863.1).
Epitope:	Internal
Reactivity:	Human
Predicted Reactivity:	Gibbon
Purification:	Immunoaffinity purified
Presentation:	Tris-buffered saline, pH 7.3, 0.5% BSA, 0.02% sodium azide
Recommended Storage:	Store at -20°C. Minimize freezing and thawing.
Uses:	IHC - Paraffin (2.5 - 3.75 µg/ml), Western blot (1:16000) & (1 - 3 µg/ml), ELISA (1:16000) (Optimal dilution to be determined by the researcher)
Size:	50 µg
Concentration:	0.5 mg/ml

Immunohistochemistry Image:



Anti-TPTE antibody IHC of human adrenal. Immunohistochemistry of formalin-fixed, paraffin-embedded tissue after heat-induced antigen retrieval. Antibody LS-B6467 concentration 2.5 ug/ml.

Western Blot Image:



Antibody (1 ug/ml) staining of Human Testis lysate (35 ug protein in RIPA buffer). Primary incubation was 1 hour. Detected by chemiluminescence.

Requested From:

Japan

Laboratory Reagent For In Vitro Research Use Only

Not for resale without prior written consent from LifeSpan BioSciences, Inc.

Created on 9/24/2014

© 2014 LifeSpan BioSciences