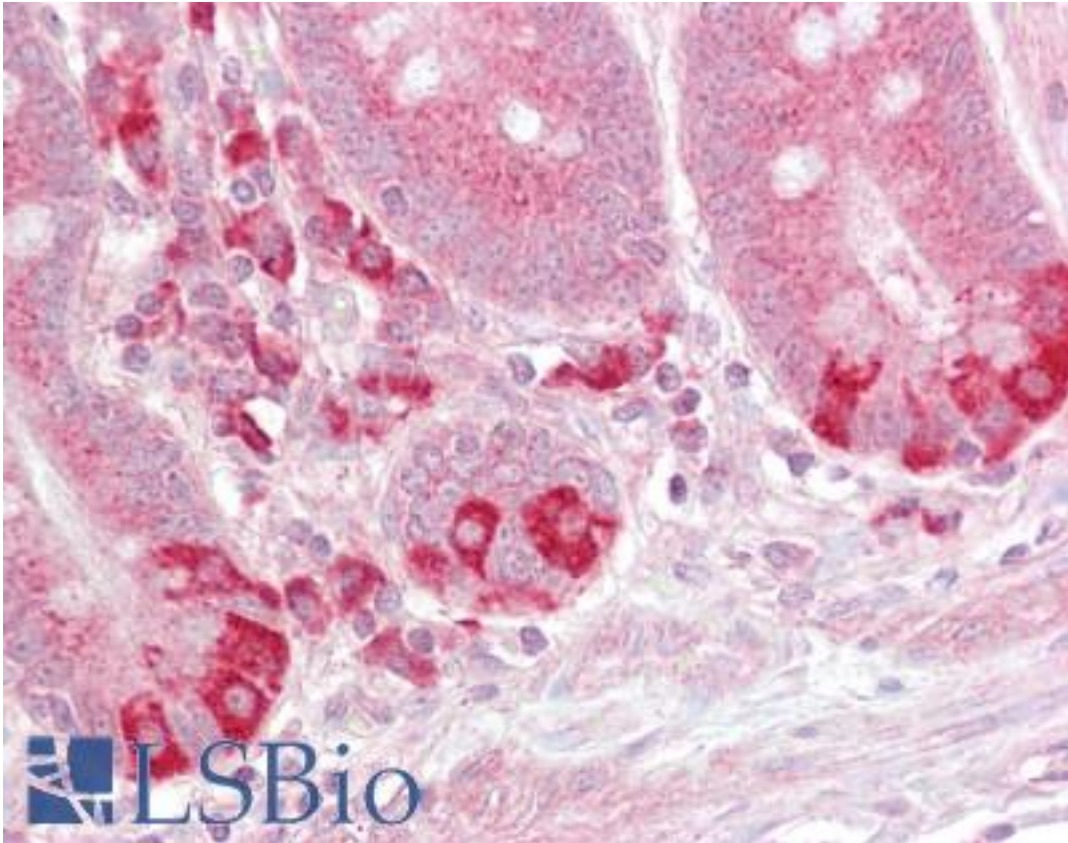


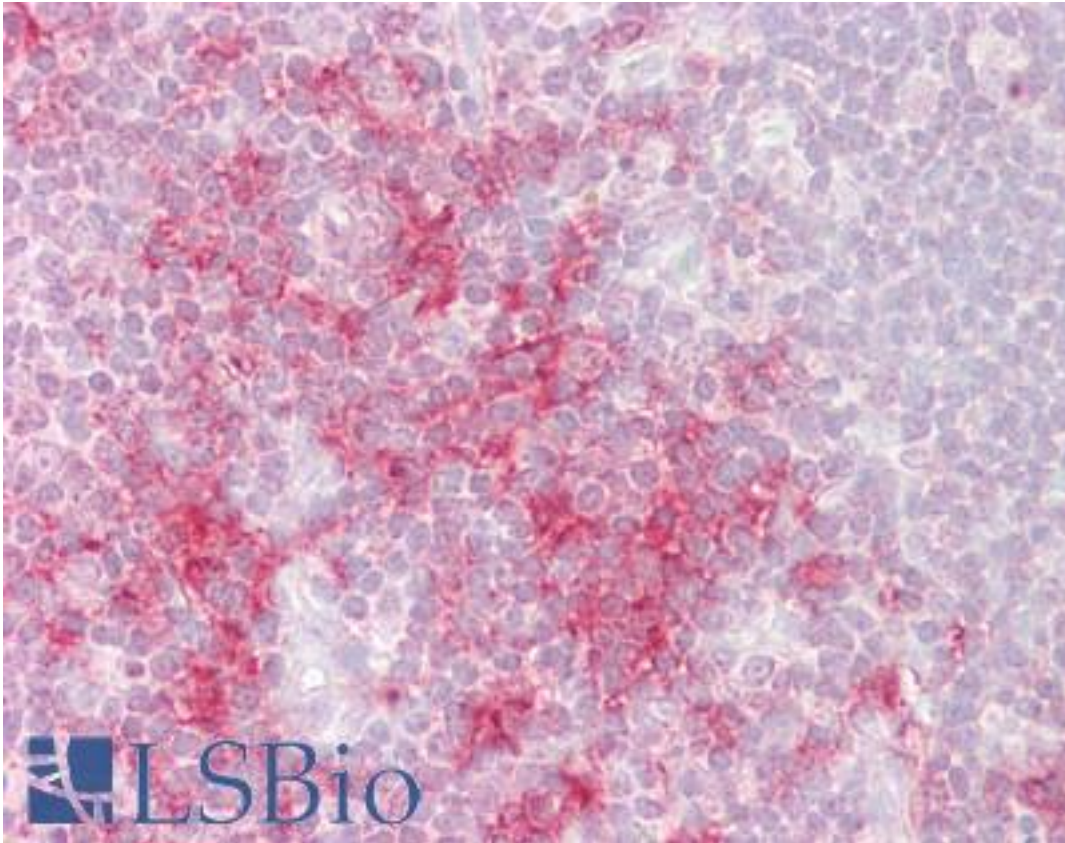
TRAF1 Goat anti-Human Polyclonal (C-Terminus) Antibody - LS-B6466 - LSBio	
<b>CatalogID:</b>	LS-B6466
<b>Validation:</b>	This antibody replaces catalog number LS-C55611. It has been validated for use in the following assays: IHC-P.
<b>Target:</b>	TNF receptor-associated factor 1 (TRAF1)
<b>Synonyms:</b>	TRAF1 Antibody, EBI6 Antibody, MGC:10353 Antibody
<b>Host</b>	TRAF1 antibody was produced in Goat
<b>Clonality:</b>	Polyclonal
<b>Immunogen Species:</b>	TRAF1 antibody was raised against Human
<b>Antigen Type:</b>	Synthetic peptide
<b>Immunogen:</b>	TRAF1 antibody was raised against synthetic peptide C-KLQSPKHAYVKDD from the C-terminus of human TRAF1 (NP_005649.1). Percent identity by BLAST analysis: Human, Gorilla, Orangutan, Gibbon, Monkey, Mouse, Hamster, Bovine, Rabbit, Platypus (100%); Marmoset, Elephant, Panda, Dog, Bat, Horse, Opossum, Turkey, Chicken (92%); Zebrafish (85%).
<b>Specificity:</b>	Human TRAF1.
<b>Epitope:</b>	C-Terminus
<b>Reactivity:</b>	Human, Gorilla, Orangutan, Gibbon, Mouse, Bovine, Hamster, Rabbit
<b>Predicted Reactivity:</b>	Monkey, Bat, Dog, Horse, Chicken
<b>Purification:</b>	Immunoaffinity purified
<b>Presentation:</b>	Tris-buffered saline, pH 7.3, 0.5% BSA, 0.02% sodium azide
<b>Recommended Storage:</b>	Store at -20°C. Minimize freezing and thawing.
<b>Uses:</b>	IHC - Paraffin (2.5 - 3.75 µg/ml), Western blot (1:16000) & (0.3 - 1 µg/ml), ELISA (1:16000) (Optimal dilution to be determined by the researcher)
<b>Size:</b>	50 µg
<b>Concentration:</b>	0.5 mg/ml

**Immunohistochemistry Image:**



Anti-TRAF1 antibody IHC of human small intestine. Immunohistochemistry of formalin-fixed, paraffin-embedded tissue after heat-induced antigen retrieval. Antibody LS-B6466 concentration 2.5 ug/ml.

**Immunohistochemistry Image:**



Anti-TRAF1 antibody IHC of human thymus. Immunohistochemistry of formalin-fixed, paraffin-embedded tissue after heat-induced antigen retrieval. Antibody LS-B6466 concentration 2.5 ug/ml.

**Western Blot Image:**



Antibody (0.5 ug/ml) staining of U937 cell lysate (35 ug protein in RIPA buffer). Primary incubation was 1 hour. Detected by chemiluminescence.

**Requested From:**

Japan

Laboratory Reagent For In Vitro Research Use Only

Not for resale without prior written consent from LifeSpan BioSciences, Inc.

Created on 9/24/2014

© 2014 LifeSpan BioSciences