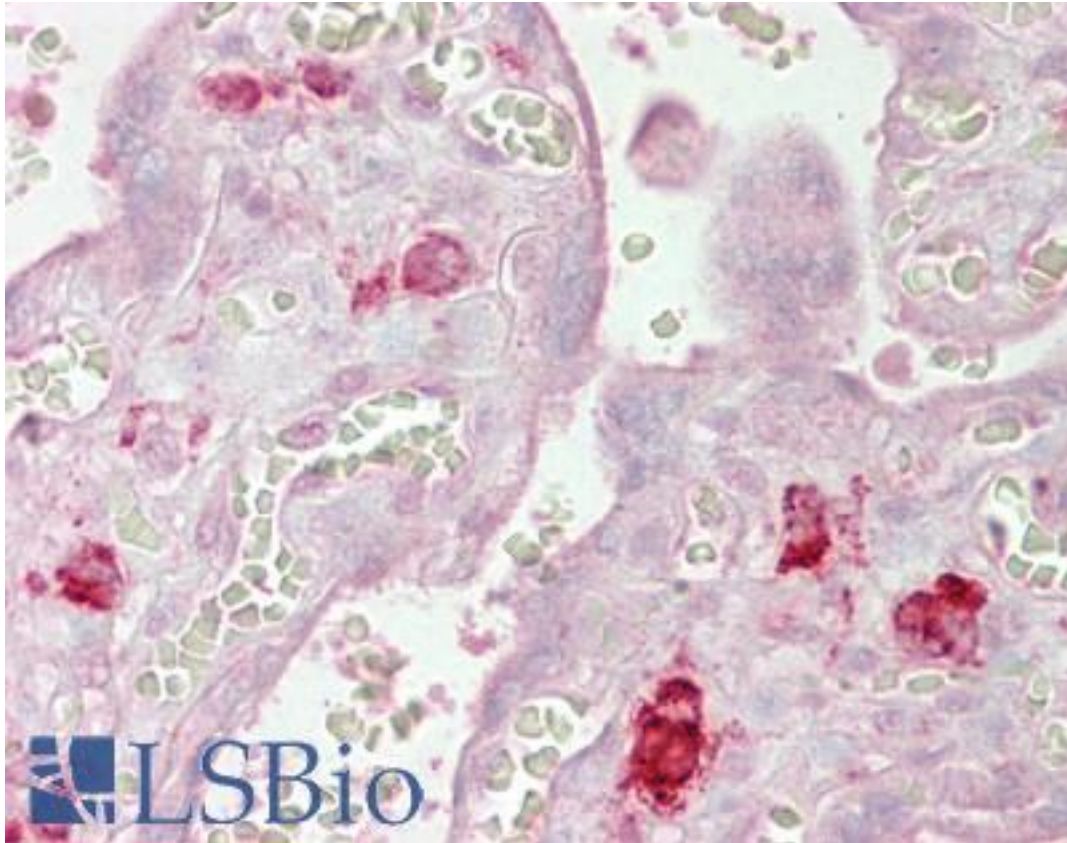


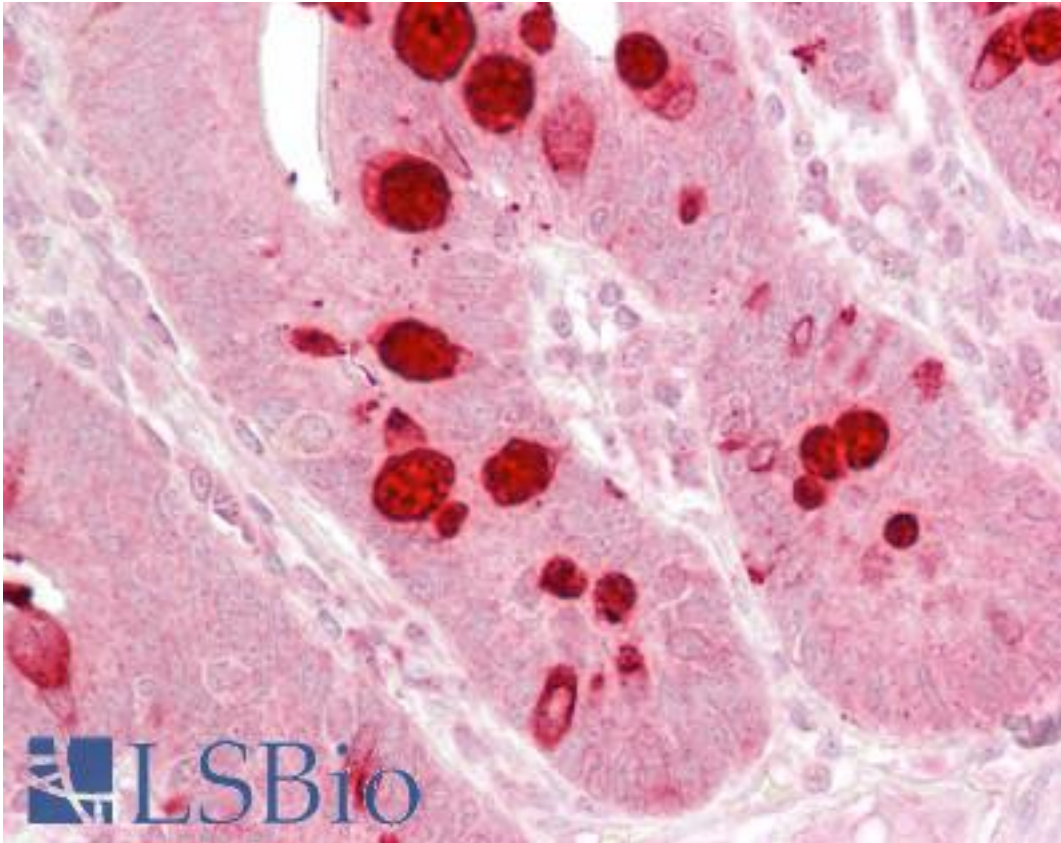
AGO1 / EIF2C Goat anti-Human Polyclonal (Internal) Antibody - LS-B6465 - LSBio	
CatalogID:	LS-B6465
Validation:	This antibody replaces catalog number LS-C54761. It has been validated for use in the following assays: IHC-P.
Target:	argonaute RISC catalytic component 1 (AGO1)
Synonyms:	AGO1 Antibody, Argonaute 1 Antibody, EIF-2C 1 Antibody, EIF2C1 Antibody, GERP95 Antibody, EIF2C Antibody, EIF2C 1 Antibody, HAgO1 Antibody, Q99 Antibody, Argonaute1 Antibody, Protein argonaute-1 Antibody
Host	AGO1 antibody was produced in Goat
Clonality:	Polyclonal
Immunogen Species:	AGO1 / EIF2C antibody was raised against Human
Antigen Type:	Synthetic peptide
Immunogen:	AGO1 / EIF2C antibody was raised against synthetic peptide C-KNASYNLDPYIQEF from an internal region of human EIF2C1 / AGO1 (NP_036331.1). Percent identity by BLAST analysis: Human, Gorilla, Gibbon, Monkey, Marmoset, Mouse, Rat, Hamster, Elephant, Panda, Bovine, Dog, Bat, Horse, Rabbit, Pig, Opossum, Turkey, Chicken, Platypus, Xenopus (100%); Stickleback, Pufferfish, Zebrafish (86%).
Specificity:	Human EIF2C1 / AGO1. This product is not expected to cross-react with EIF2C2, EIF2C3 and EIF2C4.
Epitope:	Internal
Reactivity:	Human, Gorilla, Gibbon, Monkey, Mouse, Rat, Bat, Bovine, Dog, Hamster, Horse, Pig, Rabbit, Chicken, Xenopus
Purification:	Immunoaffinity purified
Presentation:	Tris-buffered saline, pH 7.3, 0.5% BSA, 0.02% sodium azide
Recommended Storage:	Store at -20°C. Minimize freezing and thawing.
Uses:	IHC - Paraffin (2.5 - 3.75 µg/ml), ELISA (1:16000) (Optimal dilution to be determined by the researcher)
Size:	50 µg
Concentration:	0.5 mg/ml

Immunohistochemistry Image:



Anti-EIF2C1 / AGO1 antibody IHC of human placenta. Immunohistochemistry of formalin-fixed, paraffin-embedded tissue after heat-induced antigen retrieval. Antibody LS-B6465 concentration 2.5 ug/ml.

Immunohistochemistry Image:



Anti-EIF2C1 / AGO1 antibody IHC of human small intestine. Immunohistochemistry of formalin-fixed, paraffin-embedded tissue after heat-induced antigen retrieval. Antibody LS-B6465 concentration 2.5 ug/ml.

Requested From:

Japan

Laboratory Reagent For In Vitro Research Use Only

Not for resale without prior written consent from LifeSpan BioSciences, Inc.

Created on 9/24/2014

© 2014 LifeSpan BioSciences