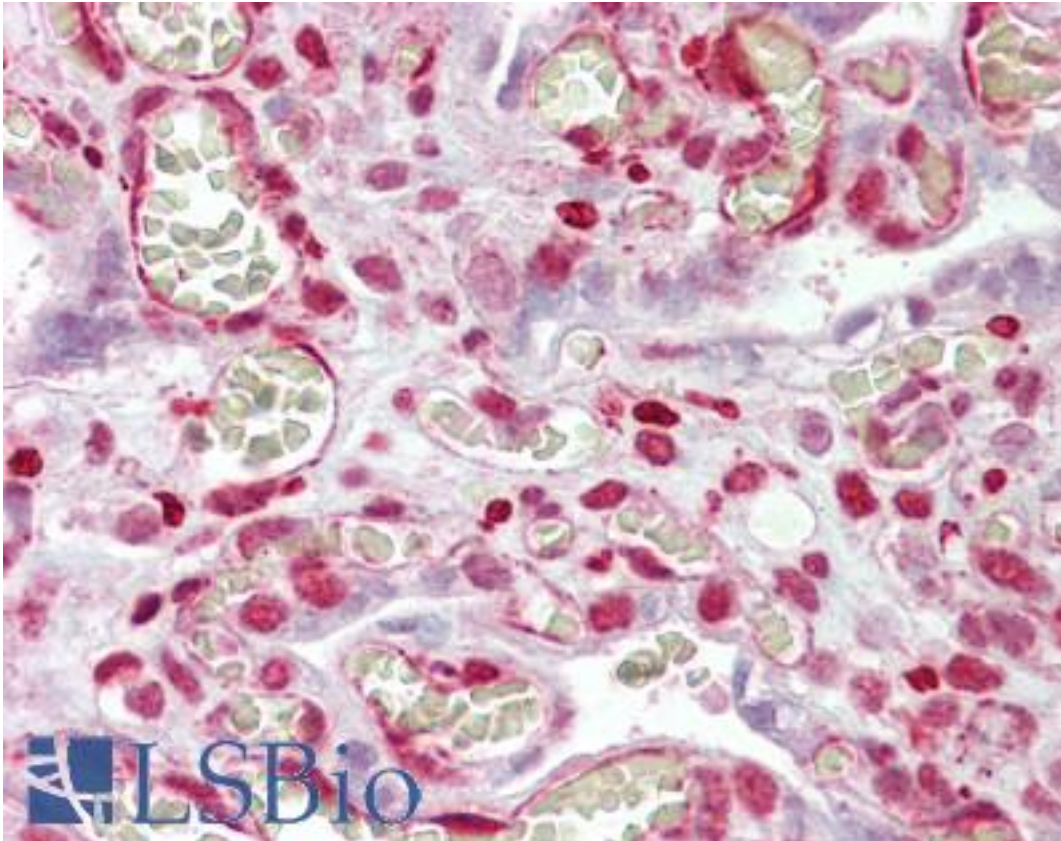


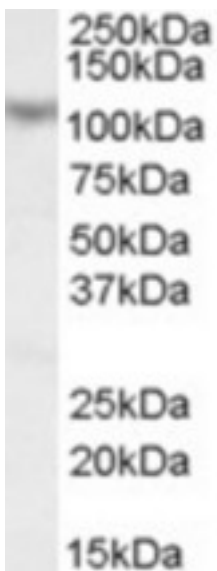
MAML1 Goat anti-Human Polyclonal (N-Terminus) Antibody - LS-B6462 - LSBio	
CatalogID:	LS-B6462
Validation:	This antibody replaces catalog number LS-C55083. It has been validated for use in the following assays: IHC-P.
Target:	mastermind-like 1 (Drosophila) (MAML1)
Synonyms:	MAML1 Antibody, Mam1 Antibody, Mastermind homolog Antibody, Mastermind-like protein 1 Antibody, Mastermind (drosophila)-like 1 Antibody, Mastermind-like 1 (Drosophila) Antibody, KIAA0200 Antibody, Mam-1 Antibody
Host	MAML1 antibody was produced in Goat
Clonality:	Polyclonal
Immunogen Species:	MAML1 antibody was raised against Human
Antigen Type:	Synthetic peptide
Immunogen:	MAML1 antibody was raised against synthetic peptide VLPTCPMAEFALPR from the N-terminus of human MAML1 (NP_055572.1). Percent identity by BLAST analysis: Human, Gibbon, Monkey, Marmoset, Mouse, Pig (100%); Elephant (93%).
Specificity:	Human MAML1.
Epitope:	N-Terminus
Reactivity:	Human, Gibbon, Monkey, Mouse, Pig
Purification:	Immunoaffinity purified
Presentation:	Tris-buffered saline, pH 7.3, 0.5% BSA, 0.02% sodium azide
Recommended Storage:	Store at -20°C. Minimize freezing and thawing.
Usage Summary:	Peptide ELISA: antibody detection limit dilution 1:128000. Western blot: Approx 110 kDa band observed in Human Skeletal Muscle lysates (calculated MW of 108 kDa according to NP_055572.1). Recommended concentration: 0.1-0.3 ug/ml.
Uses:	IHC - Paraffin (2.5 - 3.75 µg/ml), Western blot (0.1 - 0.3 µg/ml), ELISA (1:128000) (Optimal dilution to be determined by the researcher)
Size:	50 µg
Concentration:	0.5 mg/ml

Immunohistochemistry Image:



Anti-MAML1 antibody IHC of human placenta. Immunohistochemistry of formalin-fixed, paraffin-embedded tissue after heat-induced antigen retrieval. Antibody LS-B6462 concentration 2.5 ug/ml.

Western Blot Image:



MAML1 antibody (0.1 ug/ml) staining of Human Skeletal Muscle lysate (35 ug protein/ml in RIPA buffer). Primary incubation was 1 hour. Detected by chemiluminescence.

Requested From:

Japan

Laboratory Reagent For In Vitro Research Use Only

Not for resale without prior written consent from LifeSpan BioSciences, Inc.

Created on 9/24/2014

© 2014 LifeSpan BioSciences