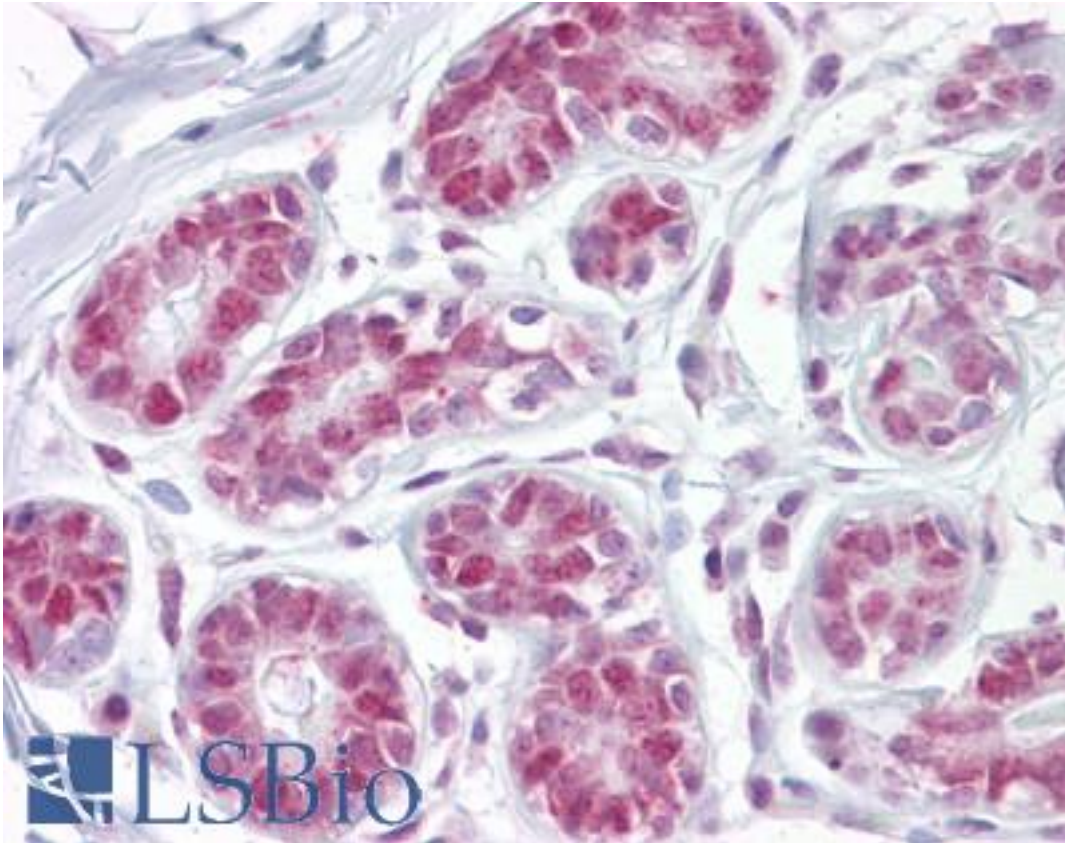


APEX1 / APE1 Rabbit anti-Human Polyclonal (aa36-52) Antibody - LS-B6458 - LSBio

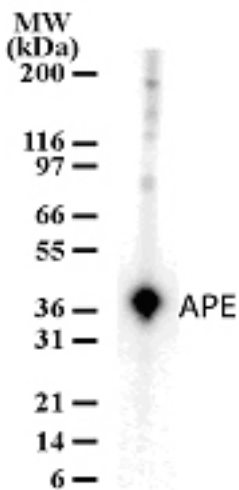
CatalogID:	LS-B6458
Validation:	This antibody replaces catalog number LS-C625. It has been validated for use in the following assays: IHC-P.
Target:	APEX nuclease (multifunctional DNA repair enzyme) 1 (APEX1)
Synonyms:	APEX1 Antibody, AP endonuclease class I Antibody, AP lyase Antibody, APE Antibody, APE-1 Antibody, APEN Antibody, APE1 Antibody, APEX nuclease Antibody, Redox factor-1 Antibody, AP endonuclease 1 Antibody, APEX Antibody, APX Antibody, Protein REF-1 Antibody, REF-1 Antibody, REF1 Antibody
Host	APEX1 antibody was produced in Rabbit
Clonality:	Polyclonal
Isotype:	IgG
Immunogen Species:	APEX1 / APE1 antibody was raised against Human
Antigen Type:	Synthetic peptide
Immunogen:	APEX1 / APE1 antibody was raised against synthetic peptide from human APEX1 / APE1.
Specificity:	KLH-conjugated synthetic peptides corresponding to amino acids 36-52 and 216-232 of human APE.
Epitope:	aa36-52
Reactivity:	Human
Purification:	Protein G purified
Presentation:	PBS, 0.02% sodium azide.
Recommended Storage:	Long term: -20°C; Short term: +4°C; Avoid freeze-thaw cycles.
Uses:	IHC - Paraffin (10 µg/ml), Western blot (1 - 2 µg/ml) (Optimal dilution to be determined by the researcher)
Size:	50 µg
Concentration:	0.5 mg/ml

Immunohistochemistry Image:



Anti-APEX1 / APE1 antibody IHC of human breast. Immunohistochemistry of formalin-fixed, paraffin-embedded tissue after heat-induced antigen retrieval. Antibody LS-B6458 concentration 10 ug/ml.

Western Blot Image:



Western blot of APE in HeLa cell lysates using antibody at a dilution of 2 ug/ml.

Requested From:

Japan

Laboratory Reagent For In Vitro Research Use Only

Not for resale without prior written consent from LifeSpan BioSciences, Inc.

Created on 9/24/2014

© 2014 LifeSpan BioSciences