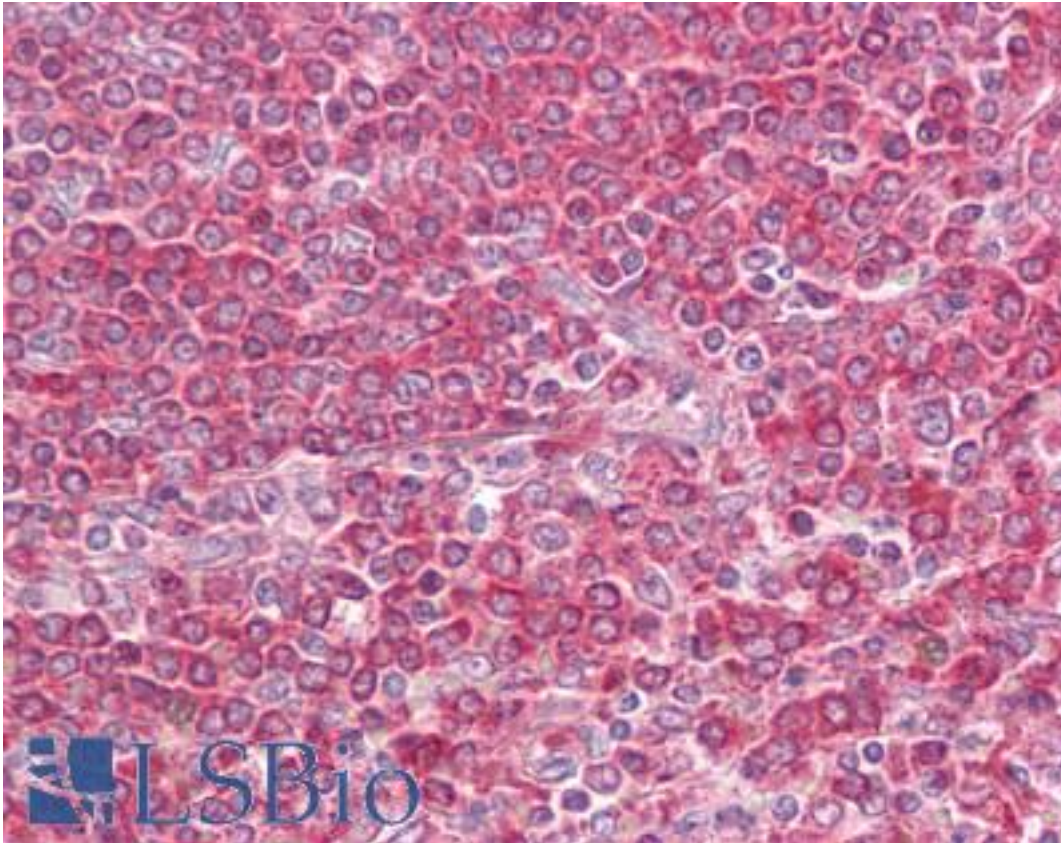


MD-1 / LY86 Rabbit anti-Human Polyclonal (aa112-125) Antibody - LS-B6457 - LSBio

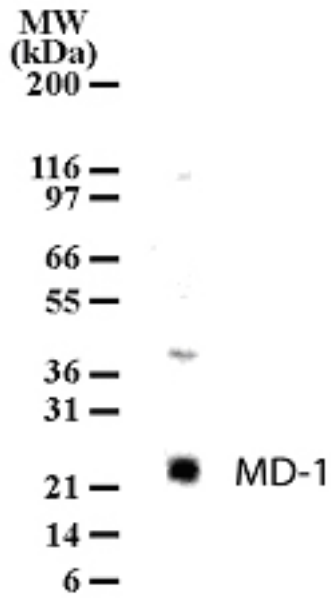
CatalogID:	LS-B6457
Validation:	This antibody replaces catalog number LS-C741. It has been validated for use in the following assays: IHC-P.
Target:	lymphocyte antigen 86 (LY86)
Synonyms:	LY86 Antibody, DJ80N2.1 Antibody, Ly-86 Antibody, MD1 Antibody, MD-1 Antibody, MD-1, RP105-associated Antibody, MMD-1 Antibody, Protein MD-1 Antibody, RP1-80N2.1 Antibody, Lymphocyte antigen 86 Antibody
Host	LY86 antibody was produced in Rabbit
Clonality:	Polyclonal
Isotype:	IgG
Immunogen Species:	MD-1 / LY86 antibody was raised against Human
Antigen Type:	Synthetic peptide
Immunogen:	MD-1 / LY86 antibody was raised against synthetic peptide from human LY86 / MD-1.
Specificity:	A KLH-conjugated synthetic peptide corresponding to amino acids 112-125 of human MD-1.
Epitope:	aa112-125
Reactivity:	Human, Mouse
Purification:	Protein G purified
Presentation:	PBS, 0.05% sodium azide.
Recommended Storage:	Long term: -20°C; Short term: +4°C; Avoid freeze-thaw cycles.
Uses:	IHC - Paraffin (10 µg/ml), Western blot (2 µg/ml), Immunoprecipitation (2 µg/ml) (Optimal dilution to be determined by the researcher)
Size:	50 µg
Concentration:	0.5 mg/ml

Immunohistochemistry Image:



Anti-LY86 / MD-1 antibody IHC of human spleen. Immunohistochemistry of formalin-fixed, paraffin-embedded tissue after heat-induced antigen retrieval. Antibody LS-B6457 concentration 10 ug/ml.

Western Blot Image:



Western blot of MD-1 in cell lysates from Ramos using antibody at 2 ug/ml dilution.

Requested From:

Japan

Laboratory Reagent For In Vitro Research Use Only

Not for resale without prior written consent from LifeSpan BioSciences, Inc.

Created on 9/24/2014

© 2014 LifeSpan BioSciences