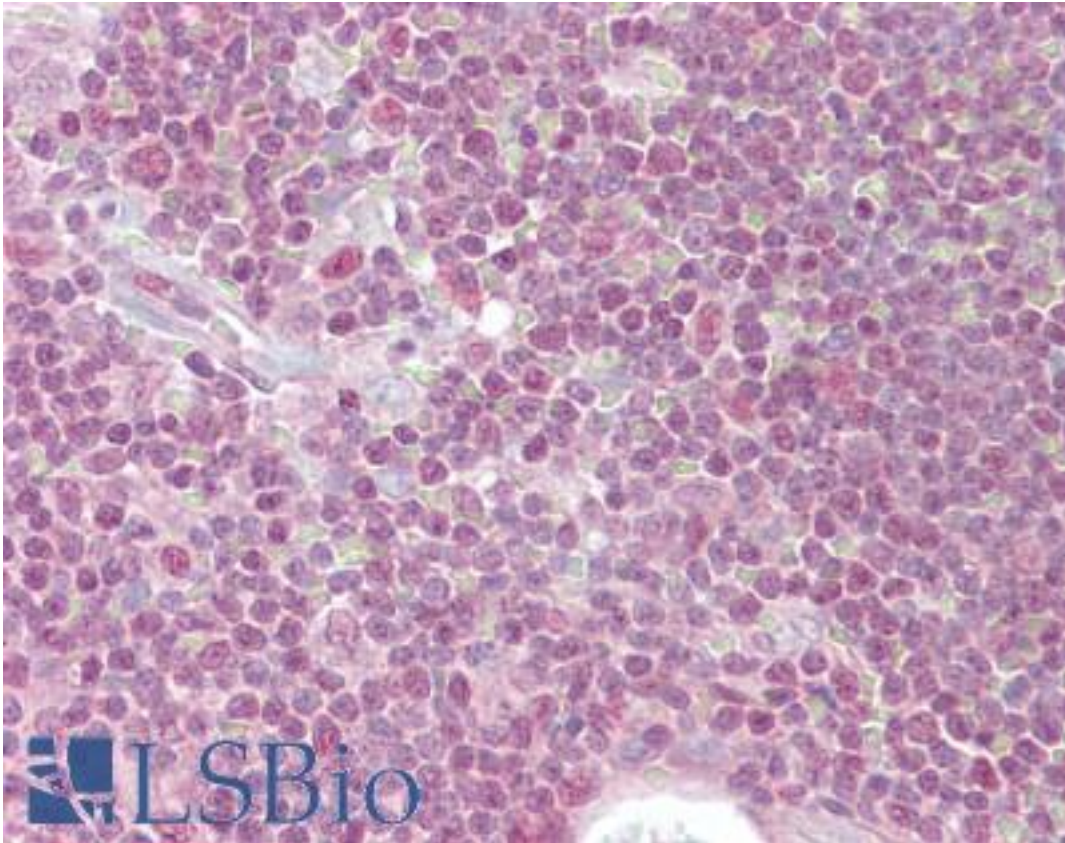


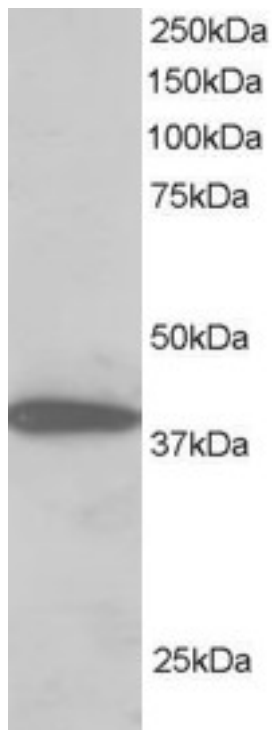
PPP1R8 / Rnase E / ARD1 Goat anti-Human Polyclonal (C-Terminus) Antibody - LS-B6454 - LSBio	
CatalogID:	LS-B6454
Validation:	This antibody replaces catalog number LS-C55176. It has been validated for use in the following assays: IHC-P.
Target:	protein phosphatase 1, regulatory subunit 8 (PPP1R8)
Synonyms:	PPP1R8 Antibody, ARD-1 Antibody, ARD1 Antibody, Activator of RNA decay Antibody, NIPP-1 Antibody, NIPP1 Antibody, Nuclear subunit of PP-1 Antibody, PRO2047 Antibody, RNase E Antibody
Host	PPP1R8 antibody was produced in Goat
Clonality:	Polyclonal
Immunogen Species:	PPP1R8 / Rnase E / ARD1 antibody was raised against Human
Antigen Type:	Synthetic peptide
Immunogen:	PPP1R8 / Rnase E / ARD1 antibody was raised against synthetic peptide C-EAWPGKKPTPSLLI from the C-terminus of human PPP1R8 (NP_002704.1; NP_054829.2; NP_612568.1). Percent identity by BLAST analysis: Human, Gorilla, Gibbon, Monkey, Marmoset, Mouse, Rat, Hamster, Elephant, Panda, Dog, Bat, Bovine, Horse, Rabbit, Opossum, Turkey, Xenopus, Stickleback, Zebrafish, Sea anemone (100%); Water flea (93%); Ant, Tick (86%).
Specificity:	Human PPP1R8. This antibody is expected to recognise all three human isoforms of this protein.
Epitope:	C-Terminus
Reactivity:	Human, Gorilla, Gibbon, Monkey, Mouse, Rat, Bat, Bovine, Dog, Hamster, Horse, Rabbit, Xenopus, Zebrafish
Purification:	Immunoaffinity purified
Presentation:	Tris-buffered saline, pH 7.3, 0.5% BSA, 0.02% sodium azide
Recommended Storage:	Store at -20°C. Minimize freezing and thawing.
Uses:	IHC - Paraffin (2.5 - 3.75 µg/ml), Western blot (1:32000) & (1 - 2 µg/ml), ELISA (1:32000) (Optimal dilution to be determined by the researcher)
Size:	50 µg
Concentration:	0.5 mg/ml

Immunohistochemistry Image:



Anti-PPP1R8 antibody IHC of human thymus. Immunohistochemistry of formalin-fixed, paraffin-embedded tissue after heat-induced antigen retrieval. Antibody LS-B6454 concentration 2.5 ug/ml.

Western Blot Image:



Antibody staining (2 ug/ml) of H460 lysate (RIPA buffer, 30 ug total protein per lane). Primary incubated for 1 hour. Detected by Western blot of chemiluminescence.

Requested From:

Japan

Laboratory Reagent For In Vitro Research Use Only

Not for resale without prior written consent from LifeSpan BioSciences, Inc.

Created on 9/24/2014

© 2014 LifeSpan BioSciences