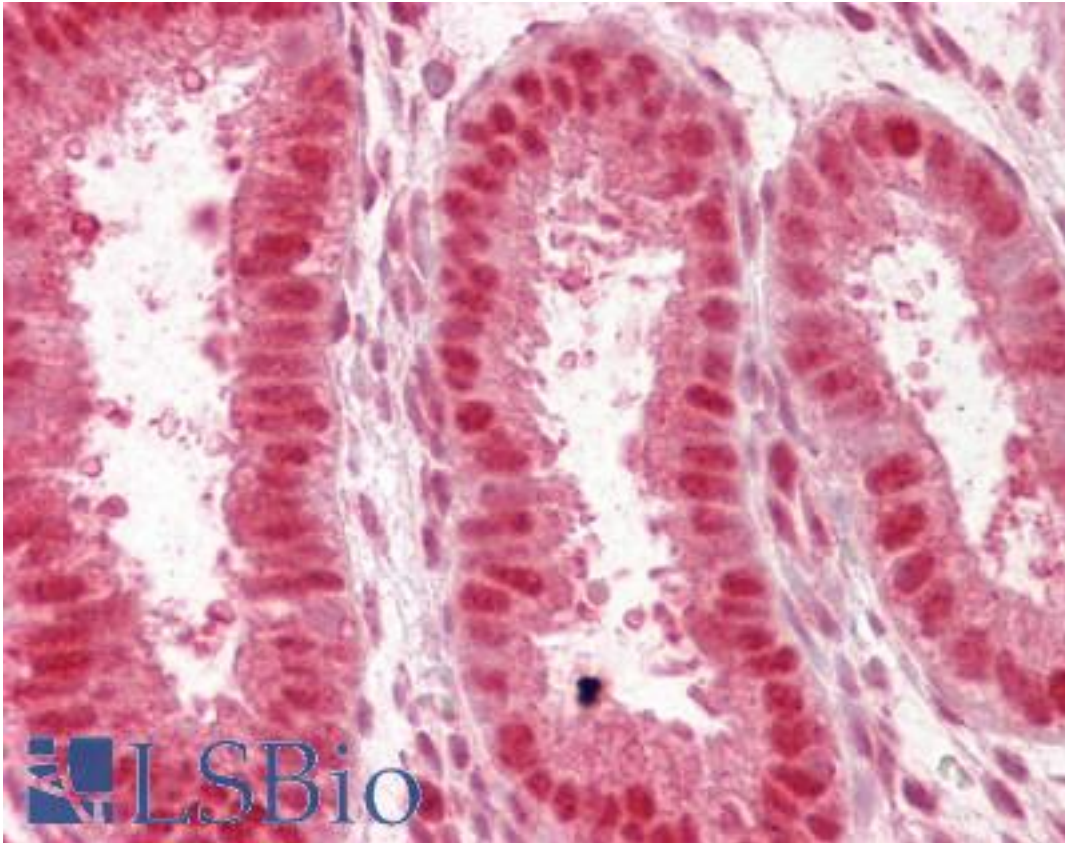


**NUP50 Goat anti-Human Polyclonal (C-Terminus) Antibody - LS-B6451 - LSBio**

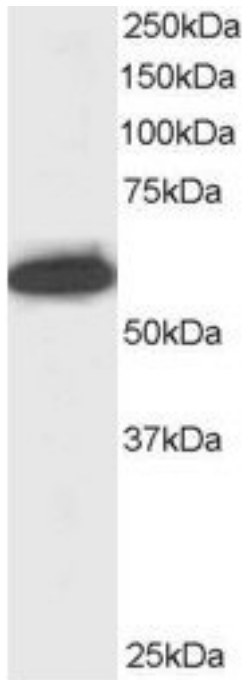
<b>CatalogID:</b>	LS-B6451
<b>Validation:</b>	This antibody replaces catalog number LS-C55186. It has been validated for use in the following assays: IHC-P.
<b>Target:</b>	nucleoporin 50kDa (NUP50)
<b>Synonyms:</b>	NUP50 Antibody, 50 kDa nucleoporin Antibody, Nucleoporin 50kD Antibody, Nucleoporin 50kDa Antibody, NPAP60 Antibody, NPAP60L Antibody, Nucleoporin Nup50 Antibody
<b>Host</b>	NUP50 antibody was produced in Goat
<b>Clonality:</b>	Polyclonal
<b>Immunogen Species:</b>	NUP50 antibody was raised against Human
<b>Antigen Type:</b>	Synthetic peptide
<b>Immunogen:</b>	NUP50 antibody was raised against synthetic peptide C-ELHKILLEKKDA from the C-terminus of human NUP50 (NP_009103.2; NP_705931.1). Percent identity by BLAST analysis: Human, Gibbon, Monkey, Mouse, Bovine (100%); Marmoset, Hamster, Pig, Opossum, Turkey, Chicken, Platypus (92%); Rat, Panda, Dog, Rabbit, Horse, Lizard, Xenopus (83%).
<b>Specificity:</b>	Human NUP50. This antibody is expected to recognise both reported isoforms (NP_009103.2; NP_705931.1).
<b>Epitope:</b>	C-Terminus
<b>Reactivity:</b>	Human, Gibbon, Mouse, Bovine
<b>Predicted Reactivity:</b>	Monkey, Hamster, Pig, Chicken
<b>Purification:</b>	Immunoaffinity purified
<b>Presentation:</b>	Tris-buffered saline, pH 7.3, 0.5% BSA, 0.02% sodium azide
<b>Recommended Storage:</b>	Store at -20°C. Minimize freezing and thawing.
<b>Uses:</b>	IHC - Paraffin (2.5 - 3.75 µg/ml), Western blot (0.2 - 1 µg/ml), ELISA (Optimal dilution to be determined by the researcher)
<b>Size:</b>	50 µg
<b>Concentration:</b>	0.5 mg/ml

**Immunohistochemistry Image:**



Anti-NUP50 antibody IHC of human uterus. Immunohistochemistry of formalin-fixed, paraffin-embedded tissue after heat-induced antigen retrieval. Antibody LS-B6451 concentration 2.5 ug/ml.

**Western Blot Image:**



Antibody staining (0.5 ug/ml) of Jurkat lysate (RIPA buffer, 30 ug total protein per lane). Primary incubated for 1 hour. Detected by Western blot of chemiluminescence.

**Requested From:**

Japan

Laboratory Reagent For In Vitro Research Use Only

Not for resale without prior written consent from LifeSpan BioSciences, Inc.

Created on 9/24/2014

© 2014 LifeSpan BioSciences