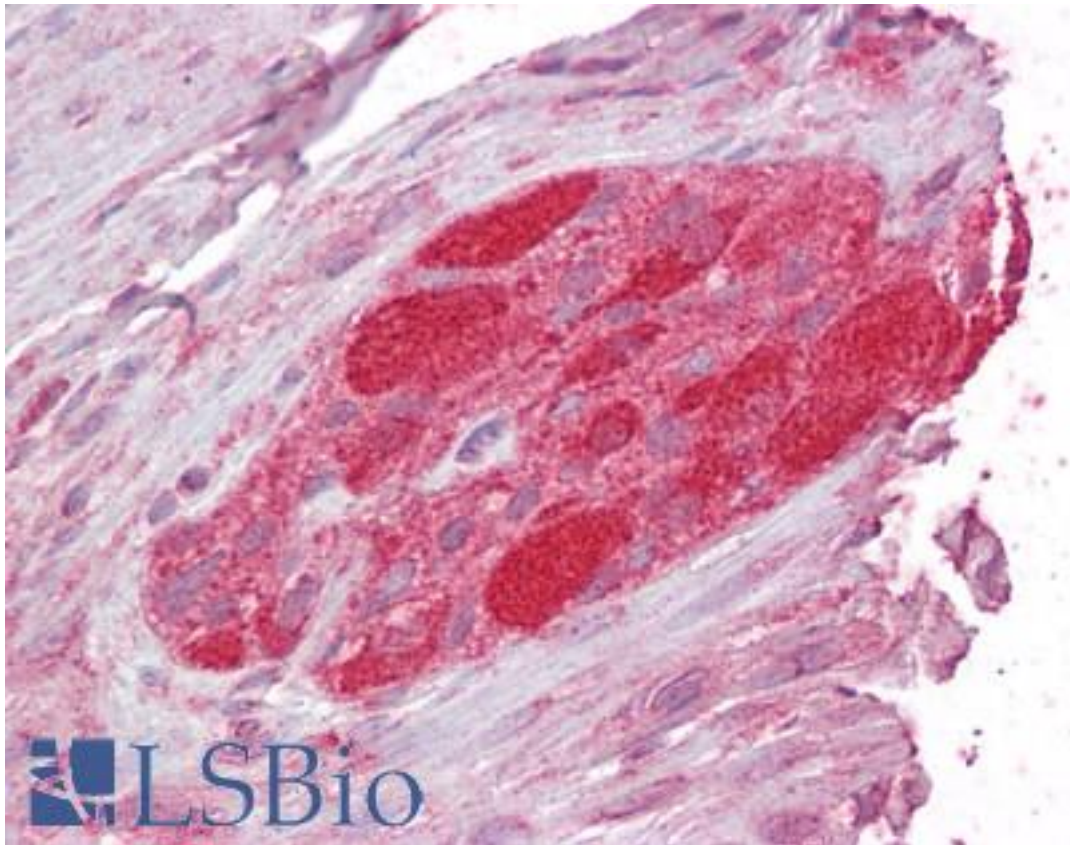


| STUB1 / CHIP Goat anti-Human Polyclonal (C-Terminus) Antibody - LS-B6443 - LSBio | |
|--|---|
| CatalogID: | LS-B6443 |
| Validation: | This antibody replaces catalog number LS-C55538. It has been validated for use in the following assays: IHC-P. |
| Target: | STIP1 homology and U-box containing protein 1, E3 ubiquitin protein ligase (STUB1) |
| Synonyms: | STUB1 Antibody, Antigen NY-CO-7 Antibody, CHIP Antibody, HSPABP2 Antibody, NY-CO-7 Antibody, SDCCAG7 Antibody, UBOX1 Antibody, CLL-associated antigen KW-8 Antibody |
| Host | STUB1 antibody was produced in Goat |
| Clonality: | Polyclonal |
| Immunogen Species: | STUB1 / CHIP antibody was raised against Human |
| Antigen Type: | Synthetic peptide |
| Immunogen: | STUB1 / CHIP antibody was raised against synthetic peptide C-DAFISENGWVEDY from the C-terminus of human STUB1 (NP_005852.2). Percent identity by BLAST analysis: Human, Gorilla, Gibbon, Monkey, Marmoset, Mouse, Rat, Hamster, Elephant, Panda, Dog, Bat, Bovine, Horse, Pig, Opossum, Turkey, Chicken, Xenopus (100%); Zebrafish (92%). |
| Specificity: | Human STUB1. |
| Epitope: | C-Terminus |
| Reactivity: | Human, Gorilla, Gibbon, Monkey, Mouse, Rat, Bat, Bovine, Dog, Hamster, Horse, Pig, Chicken, Xenopus |
| Predicted Reactivity: | Zebrafish |
| Purification: | Immunoaffinity purified |
| Presentation: | Tris-buffered saline, pH 7.3, 0.5% BSA, 0.02% sodium azide |
| Recommended Storage: | Store at -20°C. Minimize freezing and thawing. |
| Uses: | IHC - Paraffin (2.5 - 3.75 µg/ml), Western blot (0.3 - 1 µg/ml), ELISA (1:32000) (Optimal dilution to be determined by the researcher) |
| Size: | 50 µg |
| Concentration: | 0.5 mg/ml |

Immunohistochemistry Image:



Anti-STUB1 antibody IHC of human small intestine, myenteric plexus. Immunohistochemistry of formalin-fixed, paraffin-embedded tissue after heat-induced antigen retrieval. Antibody LS-B6443 concentration 2.5 ug/ml.

Western Blot Image:



Antibody staining (0.3 ug/ml) of Human Muscle lysate (RIPA buffer, 35 ug total protein per lane). Primary incubated for 1 hour. Detected by Western blot of chemiluminescence.

Requested From:

Japan

Laboratory Reagent For In Vitro Research Use Only

Not for resale without prior written consent from LifeSpan BioSciences, Inc.

Created on 9/24/2014

© 2014 LifeSpan BioSciences