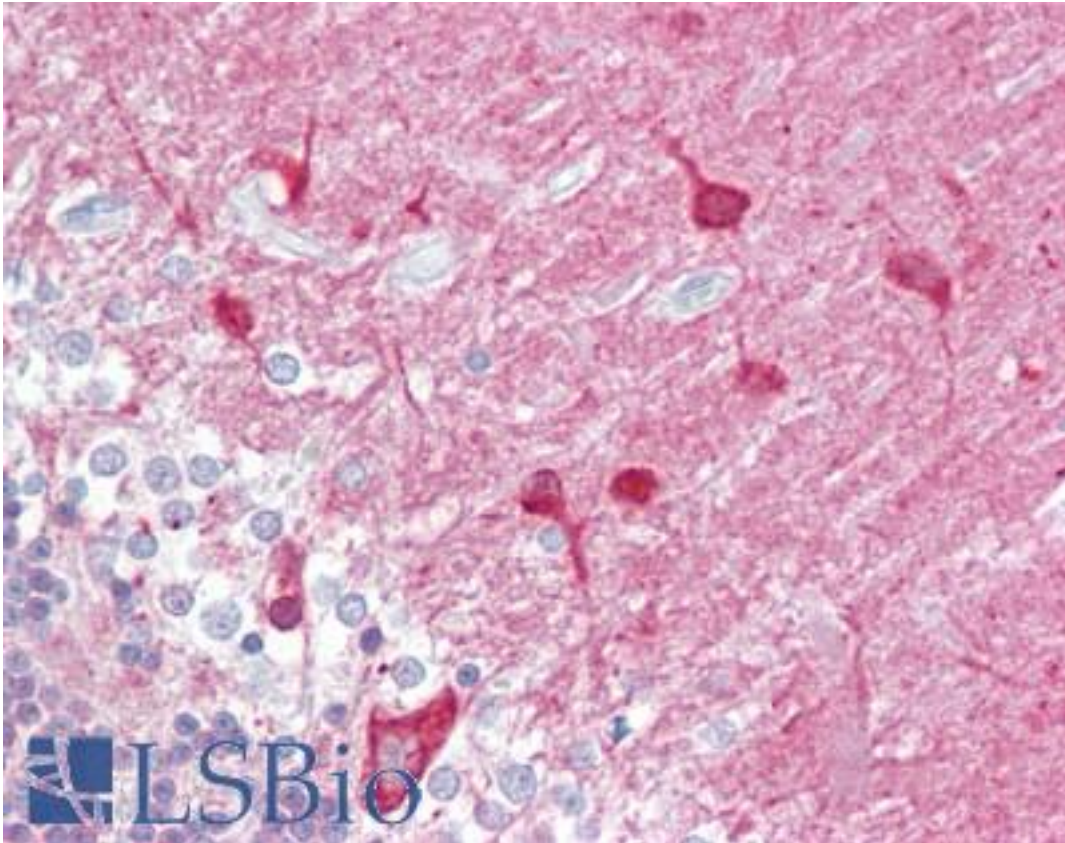


**Syndapin I / PACSIN1 Goat anti-Human Polyclonal Antibody - LS-B6442 - LSBio**

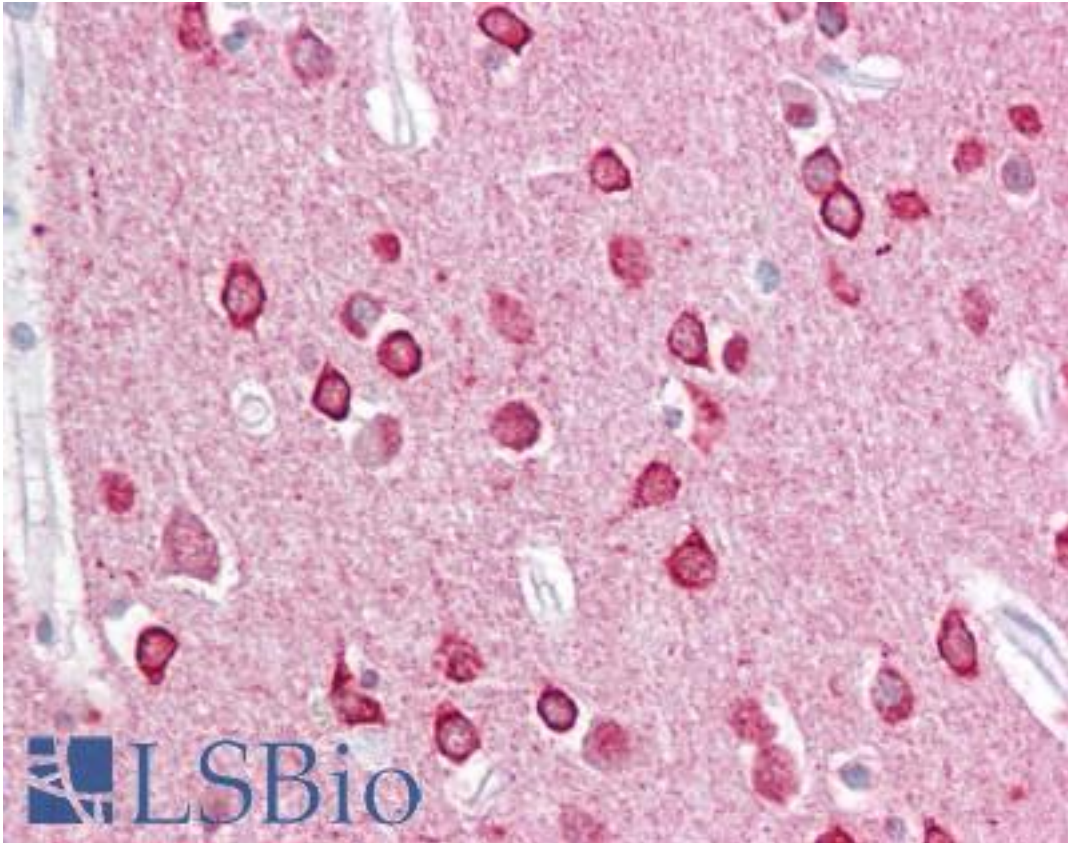
<b>CatalogID:</b>	LS-B6442
<b>Validation:</b>	This antibody replaces catalog number LS-C34633. It has been validated for use in the following assays: IHC-P.
<b>Target:</b>	protein kinase C and casein kinase substrate in neurons 1 (PACSIN1)
<b>Synonyms:</b>	PACSIN1 Antibody, KIAA1379 Antibody, Syndapin I Antibody, SDPI Antibody
<b>Host</b>	PACSIN1 antibody was produced in Goat
<b>Clonality:</b>	Polyclonal
<b>Immunogen Species:</b>	Syndapin I / PACSIN1 antibody was raised against Human
<b>Antigen Type:</b>	Synthetic peptide
<b>Immunogen:</b>	Syndapin I / PACSIN1 antibody was raised against synthetic peptide SSSYDEASLAPEET-C from the N-terminus of human PACSIN1 (NP_065855.1). Percent identity by BLAST analysis: Human, Gorilla, Orangutan, Pig (100%); Gibbon, Monkey, Marmoset, Goat, Panda, Dog, Bovine, Horse, Rabbit (93%).
<b>Specificity:</b>	Human PACSIN1. Reported variants represent identical protein (NP_065855.1; NP_001186512.1).
<b>Reactivity:</b>	Human, Gorilla, Orangutan, Pig
<b>Predicted Reactivity:</b>	Gibbon, Monkey, Bovine, Dog, Goat, Horse, Rabbit
<b>Purification:</b>	Immunoaffinity purified
<b>Presentation:</b>	Tris-buffered saline, pH 7.3, 0.5% BSA, 0.02% sodium azide
<b>Recommended Storage:</b>	Store at -20°C. Minimize freezing and thawing.
<b>Usage Summary:</b>	Peptide ELISA: antibody detection limit dilution 1:32000. Western blot: Approx 50 kDa band observed in Human Brain (hippocampus) lysates (calculated MW of 51.1 kDa according to NP_065855.1). Recommended concentration: 0.03-0.1 ug/ml. An additional band of unknown identity was also consistently observed at 37 kDa. This band was successfully blocked by incubation with the immunising peptide.
<b>Uses:</b>	IHC - Paraffin (2.5 - 3.75 µg/ml), Western blot (0.03 - 0.1 µg/ml), ELISA (1:32000) (Optimal dilution to be determined by the researcher)
<b>Size:</b>	50 µg
<b>Concentration:</b>	0.5 mg/ml

**Immunohistochemistry Image:**



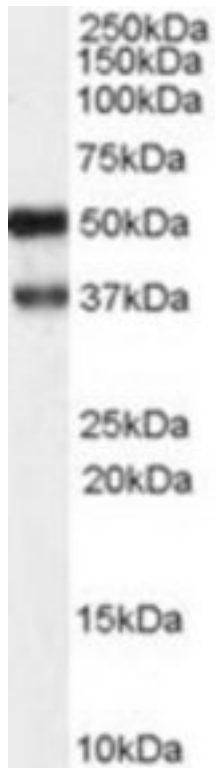
Anti-PACSIN1 antibody IHC of human brain, cerebellum. Immunohistochemistry of formalin-fixed, paraffin-embedded tissue after heat-induced antigen retrieval. Antibody LS-B6442 concentration 2.5 ug/ml.

**Immunohistochemistry Image:**



Anti-PACSIN1 antibody IHC of human brain, cortex. Immunohistochemistry of formalin-fixed, paraffin-embedded tissue after heat-induced antigen retrieval. Antibody LS-B6442 concentration 2.5 ug/ml.

**Western Blot Image:**



PACSIN1 antibody (1 ug/ml) staining of Human Brain (hippocampus) lysate (35 ug protein/ml in RIPA buffer). Primary incubation was 1 hour. Detected by chemiluminescence.

**Requested From:**

Japan

Laboratory Reagent For In Vitro Research Use Only

Not for resale without prior written consent from LifeSpan BioSciences, Inc.

Created on 9/24/2014

© 2014 LifeSpan BioSciences