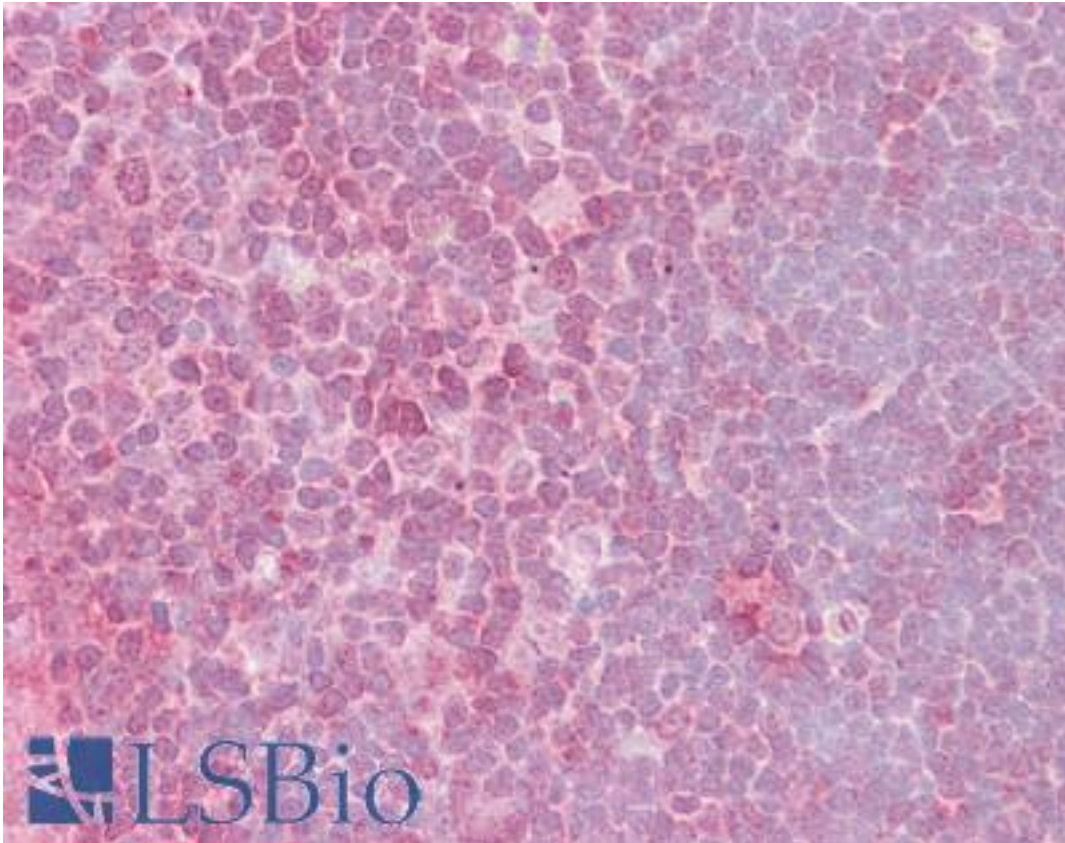


CRKL Goat anti-Human Polyclonal (C-Terminus) Antibody - LS-B6441 - LSBio

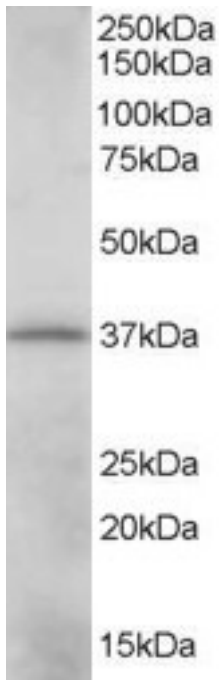
CatalogID:	LS-B6441
Validation:	This antibody replaces catalog number LS-C20149. It has been validated for use in the following assays: IHC-P.
Target:	v-crk avian sarcoma virus CT10 oncogene homolog-like (CRKL)
Synonyms:	CRKL Antibody, Crk-like protein Antibody
Host	CRKL antibody was produced in Goat
Clonality:	Polyclonal
Immunogen Species:	CRKL antibody was raised against Human
Antigen Type:	Synthetic peptide
Immunogen:	CRKL antibody was raised against synthetic peptide C-KIFDPQNPENE from the C-terminus of human CRKL (NP_005198.1). Percent identity by BLAST analysis: Human, Gorilla, Gibbon, Monkey, Marmoset, Bat, Turkey, Chicken (100%); Mouse, Rat, Hamster, Elephant, Panda, Dog, Horse, Rabbit, Pig, Xenopus (92%); Bovine, Platypus, Zebrafish (83%).
Specificity:	Human CRKL.
Epitope:	C-Terminus
Reactivity:	Human, Gorilla, Gibbon, Monkey, Bat, Chicken
Predicted Reactivity:	Mouse, Rat, Dog, Hamster, Horse, Pig, Rabbit, Xenopus
Purification:	Immunoaffinity purified
Presentation:	Tris-buffered saline, pH 7.3, 0.5% BSA, 0.02% sodium azide
Recommended Storage:	Store at -20°C. Minimize freezing and thawing.
Uses:	IHC - Paraffin (2.5 - 3.75 µg/ml), Western blot (0.01 - 0.03 µg/ml), ELISA (1:16000) (Optimal dilution to be determined by the researcher)
Size:	50 µg
Concentration:	0.5 mg/ml

Immunohistochemistry Image:



Anti-CRKL antibody IHC of human thymus. Immunohistochemistry of formalin-fixed, paraffin-embedded tissue after heat-induced antigen retrieval. Antibody LS-B6441 concentration 2.5 ug/ml.

Western Blot Image:



(0.01 ug/ml) Staining of K562 lysate (35 ug protein in RIPA buffer). Primary incubation was 1 hour. Detected by chemiluminescence.

Requested From:

Japan

Laboratory Reagent For In Vitro Research Use Only

Not for resale without prior written consent from LifeSpan BioSciences, Inc.

Created on 9/24/2014

© 2014 LifeSpan BioSciences