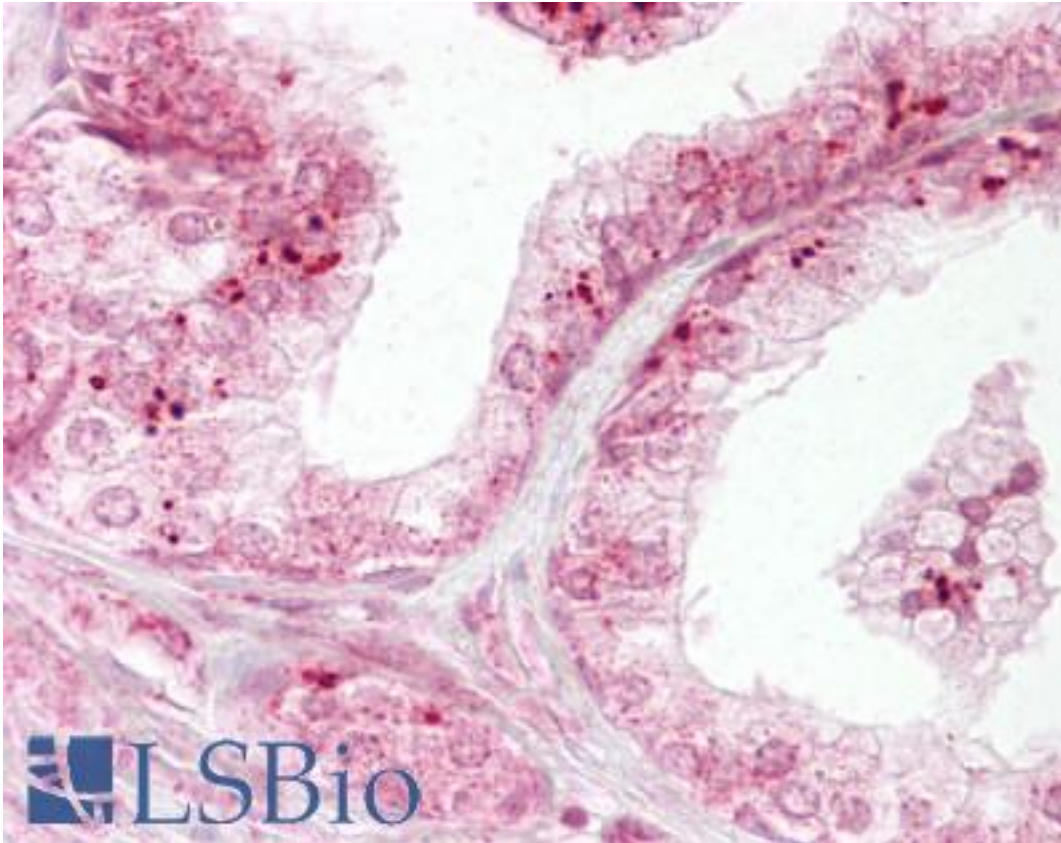


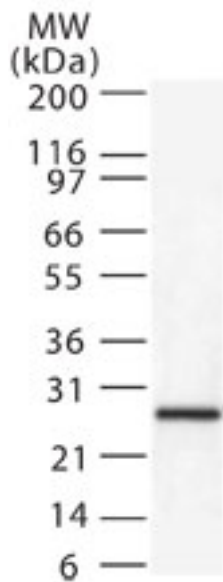
DIABLO / SMAC Rabbit anti-Human Polyclonal (aa199-212) Antibody - LS-B6439 - LSBio	
CatalogID:	LS-B6439
Validation:	This antibody replaces catalog number LS-C801. It has been validated for use in the following assays: IHC-P.
Target:	diablo, IAP-binding mitochondrial protein
Synonyms:	DIABLO Antibody, DFNA64 Antibody, DIABLO-S Antibody, Diablo homolog, mitochondrial Antibody, SMAC3 Antibody, Mitochondrial Smac protein Antibody, SMAC Antibody
Family / Subfamily:	Apoptosis / Not assigned-Apoptosis
Host	DIABLO antibody was produced in Rabbit
Clonality:	Polyclonal
Isotype:	IgG
Immunogen Species:	DIABLO / SMAC antibody was raised against Human
Antigen Type:	Synthetic peptide
Immunogen:	DIABLO / SMAC antibody was raised against synthetic peptide from human DIABLO / SMAC.
Specificity:	Two synthetic peptides corresponding to amino acids 199 to 212 and amino acids 226 to 239 of human Smac (Genbank accession no. AAF87716).
Epitope:	aa199-212
Reactivity:	Human
Purification:	Protein G purified
Presentation:	PBS, 0.02% sodium azide.
Recommended Storage:	Long term: -20°C; Short term: +4°C; Avoid freeze-thaw cycles.
Uses:	IHC - Paraffin (10 µg/ml), Western blot (0.5 - 2 µg/ml) (Optimal dilution to be determined by the researcher)
Size:	50 µg

Immunohistochemistry Image:



Anti-DIABLO / SMAC antibody IHC of human prostate. Immunohistochemistry of formalin-fixed, paraffin-embedded tissue after heat-induced antigen retrieval. Antibody LS-B6439 concentration 10 ug/ml.

Western Blot Image:



Western blot of Smac/DIABLO in HeLa cell lysate.

Requested From:

Japan

Laboratory Reagent For In Vitro Research Use Only

Not for resale without prior written consent from LifeSpan BioSciences, Inc.

Created on 9/24/2014

© 2014 LifeSpan BioSciences