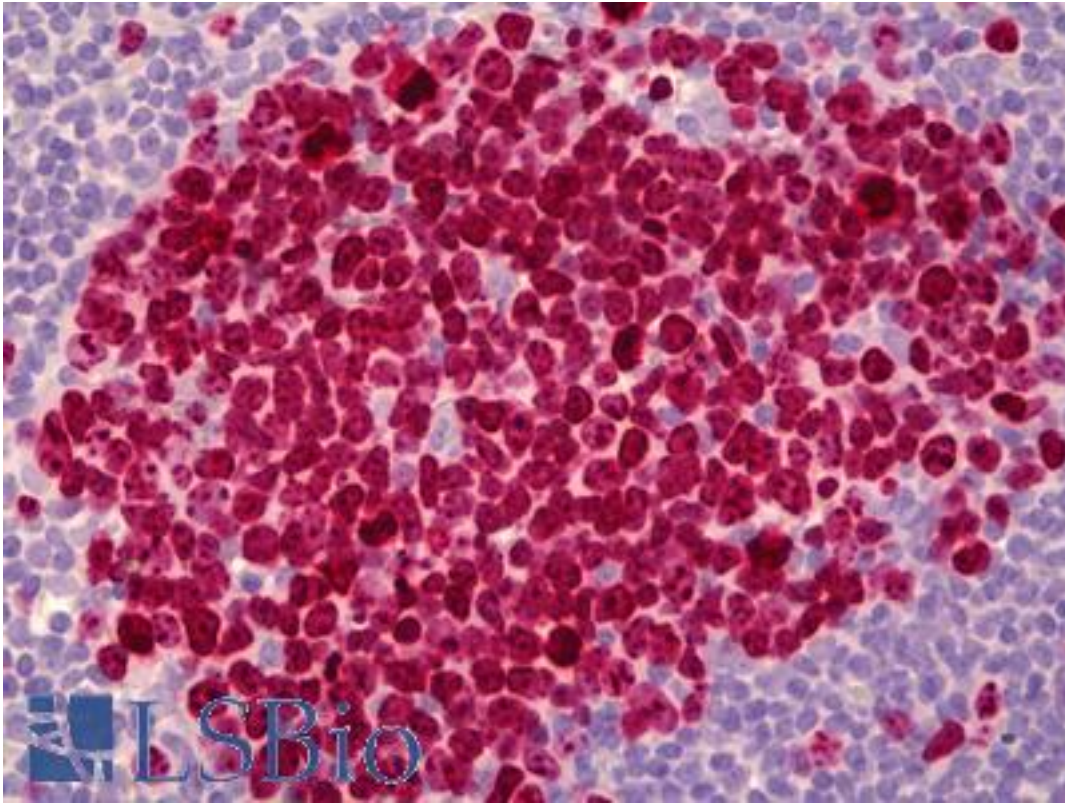


**MKI67 / Ki67 Mouse anti-Human Monoclonal (Ki-S5) Antibody - LS-B6433 - LSBio**

<b>CatalogID:</b>	LS-B6433
<b>Validation:</b>	This antibody replaces catalog number LS-C25007. It has been validated for use in the following assays: IHC-P.
<b>Target:</b>	marker of proliferation Ki-67 (MKI67)
<b>Synonyms:</b>	MKI67 Antibody, Antigen KI-67 Antibody, Ki67 Antibody, KIA Antibody
<b>Host</b>	MKI67 antibody was produced in Mouse
<b>Clonality:</b>	Monoclonal
<b>Isotype:</b>	IgG1
<b>Clone Name:</b>	Ki-S5
<b>Immunogen Species:</b>	MKI67 / Ki67 antibody was raised against Human
<b>Antigen Type:</b>	Cells
<b>Immunogen:</b>	MKI67 / Ki67 antibody was raised against nuclear protein preparation from the human cell line U937.50.
<b>Specificity:</b>	Recognizes a cell-cycle-associated protein of 345kD and 395kD identical with the human Ki-67 antigen. Binds to a formalin-resistant epitope of the Ki-67 antigen. Confined to the nuclei of proliferating cells and no cross-reactivity with cytoplasmic antigens of epithelial occurs even after antigen retrieval. Immunohistochemistry labeling of fresh and frozen samples showed identical results with Ki-67 and Ki-S5.
<b>Reactivity:</b>	Human
<b>Purification:</b>	Protein A purified
<b>Presentation:</b>	PBS, pH 7.6, 0.1% sodium azide.
<b>Recommended Storage:</b>	Short term 4°C, long term aliquot and store at -20°C, avoid freeze thaw cycles.
<b>Usage Summary:</b>	Suitable for use in Western Blot, Immunocytochemistry, Immunohistochemistry and Flow Cytometry. Western Blot: 1:500. Detected cell-cycle-associated protein of 345kD and 395kD on 10 ug of A431 lysates. Immunocytochemistry: 5-10 ug/ml. Immunohistochemistry: 5-10 ug/ml. Positive control: Tonsil tissue, A431 Cell Lysate.
<b>Uses:</b>	IHC - Paraffin (10 µg/ml), ICC (5 - 10 µg/ml), Western blot (1:500), Flow Cytometry (Optimal dilution to be determined by the researcher)
<b>Size:</b>	50 µg
<b>Concentration:</b>	1 mg/ml

**Immunohistochemistry Image:**



Anti-MKI67 / Ki-67 antibody IHC of human tonsil, germinal center. Immunohistochemistry of formalin-fixed, paraffin-embedded tissue after heat-induced antigen retrieval. Antibody LS-B6433 concentration 10 ug/ml.

**Requested From:**

Japan

Laboratory Reagent For In Vitro Research Use Only

Not for resale without prior written consent from LifeSpan BioSciences, Inc.

Created on 9/24/2014

© 2014 LifeSpan BioSciences