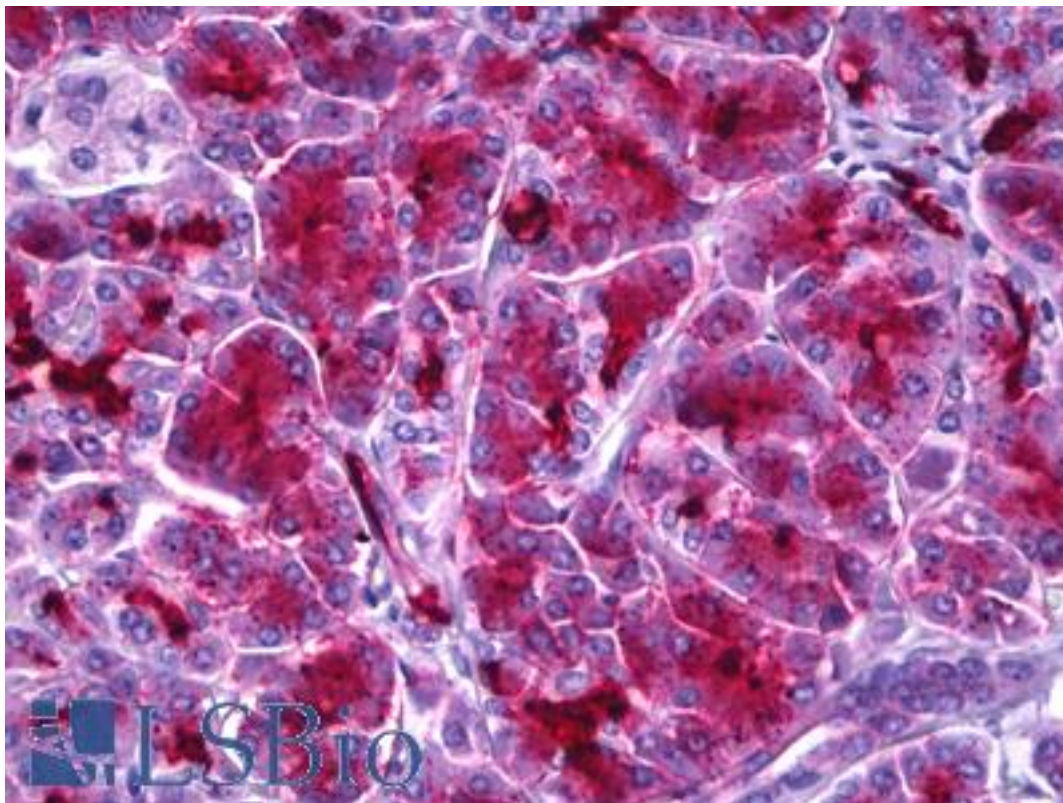


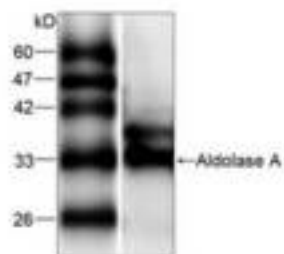
ALDOA / Aldolase Mouse anti-Human Monoclonal Antibody - LS-B6425 - LSBio	
CatalogID:	LS-B6425
Validation:	This antibody replaces catalog number LS-C137612. It has been validated for use in the following assays: IHC-P.
Target:	aldolase A, fructose-bisphosphate (ALDOA)
Synonyms:	ALDOA Antibody, ALDA Antibody, Aldolase Antibody, GSD12 Antibody, Muscle-type aldolase Antibody, Lung cancer antigen NY-LU-1 Antibody
Host	ALDOA antibody was produced in Mouse
Clonality:	Monoclonal
Isotype:	IgG1
Immunogen Species:	ALDOA / Aldolase antibody was raised against Human
Antigen Type:	Recombinant protein
Immunogen:	ALDOA / Aldolase antibody was raised against recombinant protein
Specificity:	Anti-Aldolase A recognizes Aldolase A expression in Hela whole cell lysate.
Reactivity:	Human
Purification:	Affinity purified
Presentation:	Citrate-Tris-HCl buffer, pH 7.0, 0.02% Proclin 300
Recommended Storage:	Short term 4°C, long term aliquot and store at -20°C, avoid freeze thaw cycles.
Uses:	IHC - Paraffin (20 µg/ml), Western blot (1:1000), ELISA (Optimal dilution to be determined by the researcher)
Size:	50 µl
Concentration:	1 mg/ml

Immunohistochemistry Image:



Anti-Aldolase antibody IHC of human pancreas. Immunohistochemistry of formalin-fixed, paraffin-embedded tissue after heat-induced antigen retrieval. Antibody LS-B6425 concentration 20 ug/ml.

Western Blot Image:



Requested From:

Japan

Laboratory Reagent For In Vitro Research Use Only

Not for resale without prior written consent from LifeSpan BioSciences, Inc.

Created on 9/24/2014

© 2014 LifeSpan BioSciences