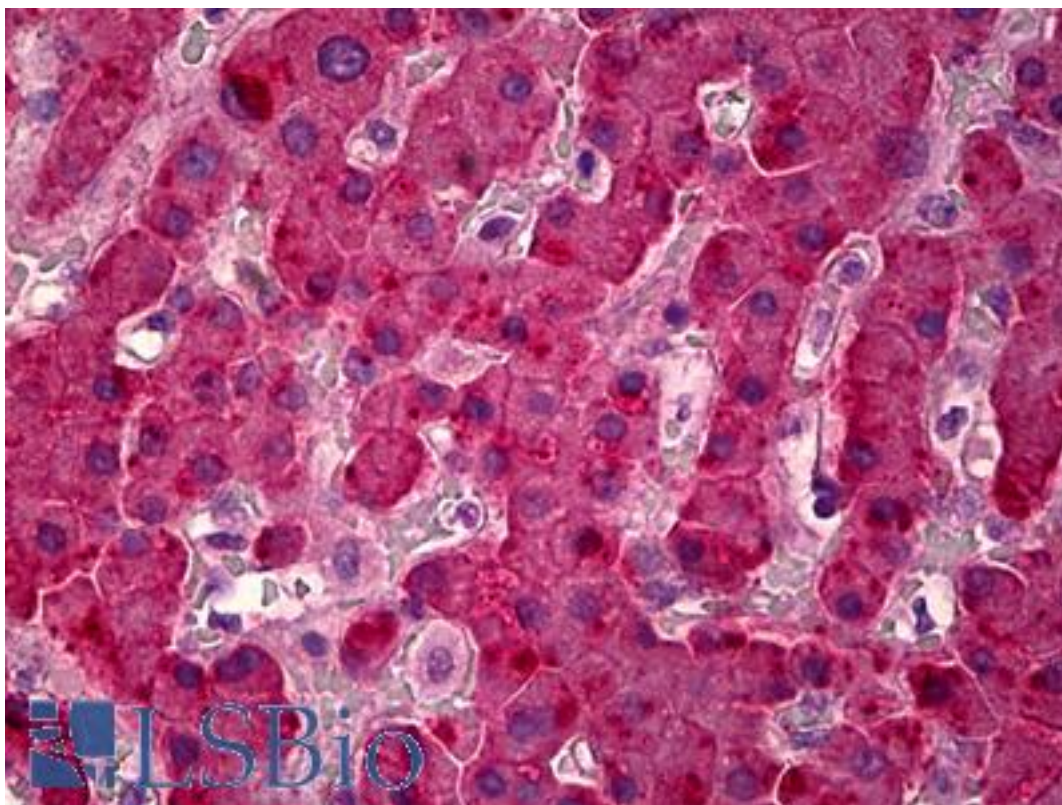


AFP / Alpha Fetoprotein Mouse anti-Human Monoclonal Antibody - LS-B6424 - LSBio

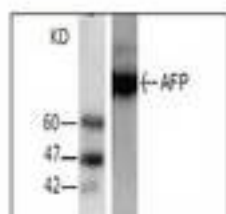
CatalogID:	LS-B6424
Validation:	This antibody replaces catalog number LS-C137575. It has been validated for use in the following assays: IHC-P.
Target:	alpha-fetoprotein (AFP)
Synonyms:	AFP Antibody, Alpha-1-fetoprotein Antibody, Alpha-fetoprotein Antibody, HPAFP Antibody, Alpha-fetoglobulin Antibody, FETA Antibody
Host	AFP antibody was produced in Mouse
Clonality:	Monoclonal
Isotype:	IgG1
Immunogen Species:	AFP / Alpha Fetoprotein antibody was raised against Human
Antigen Type:	Recombinant protein
Immunogen:	AFP / Alpha Fetoprotein antibody was raised against recombinant protein
Specificity:	Anti-AFP recognizes AFP expression in HepG2 whole cell lysate.
Reactivity:	Human
Purification:	Affinity purified
Presentation:	Citrate-Tris-HCl buffer, pH 7.0, 0.02% Proclin 300
Recommended Storage:	Short term 4°C, long term aliquot and store at -20°C, avoid freeze thaw cycles.
Uses:	IHC - Paraffin (20 µg/ml), Western blot (1:1000), ELISA (Optimal dilution to be determined by the researcher)
Size:	50 µl
Concentration:	1 mg/ml

Immunohistochemistry Image:



Anti-Alpha-Fetoprotein antibody IHC of human liver. Immunohistochemistry of formalin-fixed, paraffin-embedded tissue after heat-induced antigen retrieval. Antibody LS-B6424 concentration 20 ug/ml.

Western Blot Image:



Requested From:

Japan

Laboratory Reagent For In Vitro Research Use Only

Not for resale without prior written consent from LifeSpan BioSciences, Inc.

Created on 9/24/2014

© 2014 LifeSpan BioSciences