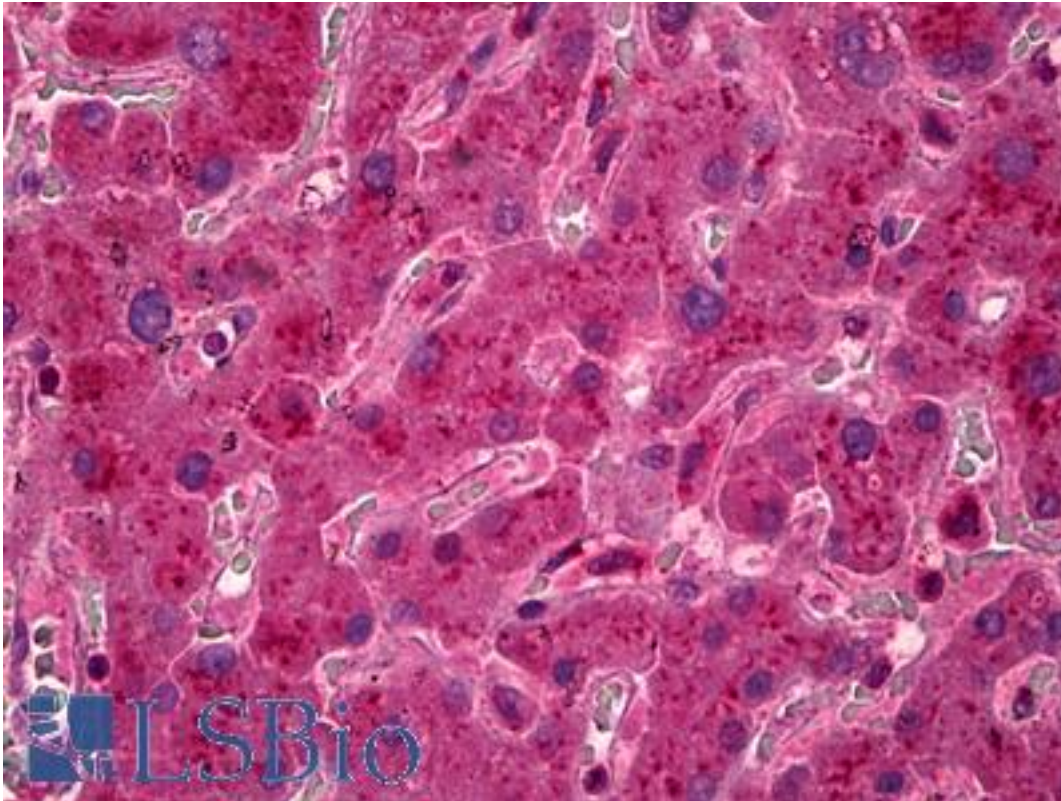


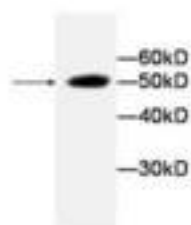
LDHA / LDH1 Mouse anti-Human Monoclonal Antibody - LS-B6423 - LSBio	
<b>CatalogID:</b>	LS-B6423
<b>Validation:</b>	This antibody replaces catalog number LS-C137568. It has been validated for use in the following assays: IHC-P.
<b>Target:</b>	lactate dehydrogenase A (LDHA)
<b>Synonyms:</b>	LDHA Antibody, LDH muscle subunit Antibody, LDH1 Antibody, Lactate dehydrogenase M Antibody, LDH-M Antibody, GSD11 Antibody, Lactate dehydrogenase A Antibody, LDH-A Antibody, LDHM Antibody, PIG19 Antibody, Proliferation-inducing gene 19 Antibody
<b>Host</b>	LDHA antibody was produced in Mouse
<b>Clonality:</b>	Monoclonal
<b>Isotype:</b>	IgG1
<b>Immunogen Species:</b>	LDHA / LDH1 antibody was raised against Human
<b>Antigen Type:</b>	Recombinant protein
<b>Immunogen:</b>	LDHA / LDH1 antibody was raised against recombinant protein
<b>Specificity:</b>	Anti-LDHA recognizes recombinant protein LDHA.
<b>Reactivity:</b>	Human
<b>Purification:</b>	Affinity purified
<b>Presentation:</b>	Citrate-Tris-HCl buffer, pH 7.0, 0.02% Proclin 300
<b>Recommended Storage:</b>	Short term 4°C, long term aliquot and store at -20°C, avoid freeze thaw cycles.
<b>Uses:</b>	IHC - Paraffin (20 µg/ml), Western blot (1:1000), ELISA (Optimal dilution to be determined by the researcher)
<b>Size:</b>	50 µl
<b>Concentration:</b>	1 mg/ml

**Immunohistochemistry Image:**



Anti-LDHA antibody IHC of human liver. Immunohistochemistry of formalin-fixed, paraffin-embedded tissue after heat-induced antigen retrieval. Antibody LS-B6423 concentration 20 ug/ml.

**Western Blot Image:**



Requested From:

Japan

Laboratory Reagent For In Vitro Research Use Only

Not for resale without prior written consent from LifeSpan BioSciences, Inc.

Created on 9/24/2014

© 2014 LifeSpan BioSciences